



Regent House, 123 High Street, Odiham, Hampshire

For the finer things in property.

**STRUTT  
& PARKER**

BNP PARIBAS GROUP



# Regent House, 123 High Street Odiham Hook Hampshire RG29 1LA

A handsome Georgian townhouse which has been refurbished and renovated to retain many character features, located in the sought-after village of Odiham

M3 (Junction 5) 1.9 miles, Hook train station 3.3 miles (London Waterloo from 55 minutes), Winchfield station 3.1 miles (London Waterloo from 50 minutes), Hartley Wintney 4.6 miles, Farnham 8 miles, Basingstoke 8.9 miles

Kitchen/dining room | Reception room | Utility room | WC | 4 Double bedrooms | 3 Bath/shower rooms | Basement | Courtyard garden Parking

EPC Rating C

## The property

Regent House is an impressive Georgian townhouse which is locally listed and has been superbly renovated and restored by the current owners while retaining many character features. The exterior has been revived to complement the historical High Street of Odiham.

The property comprises three floors, plus a basement, courtyard garden and an allocated parking space.

The interiors are neutrally finished with modern living in mind. The stunning contemporary kitchen/breakfast room, integrated Siemens appliances, induction hob, Capel washing machine and Quooker tap, leads to the breakfast area with double doors out to the South facing courtyard garden. The ground

floor reception room has been beautifully restored with a delightful curved bay window. The first floor has two double bedrooms with the principal benefitting from an en suite shower room. Two further double bedrooms, one with en suite and a separate bathroom can be found on the second floor. The basement adds further flexibility to the property.

## Outside

A delightful landscaped courtyard garden ideal for outdoor entertaining is accessed from the kitchen. A gate leads from the garden to the two allocated parking spaces.

## Location

The property is situated in the heart of Odiham. The village offers a delightful mix of charm and convenience with a wealth of amenities, including a dentist, doctors', pharmacy, shops, eateries and public houses. It enjoys several scenic footpaths, one running along the Basingstoke Canal. Further facilities can be found at nearby Farnham and Basingstoke.

Excellent road and rail connections are on offer with the M3 close and the mainline stations at Hook and Winchfield providing fast rail links to London. Private schools include Daneshill, St Neot's, Yateley Manor, St Nicholas' and Lord Wandsworth College



Please note, the furniture in this image has been virtually staged.

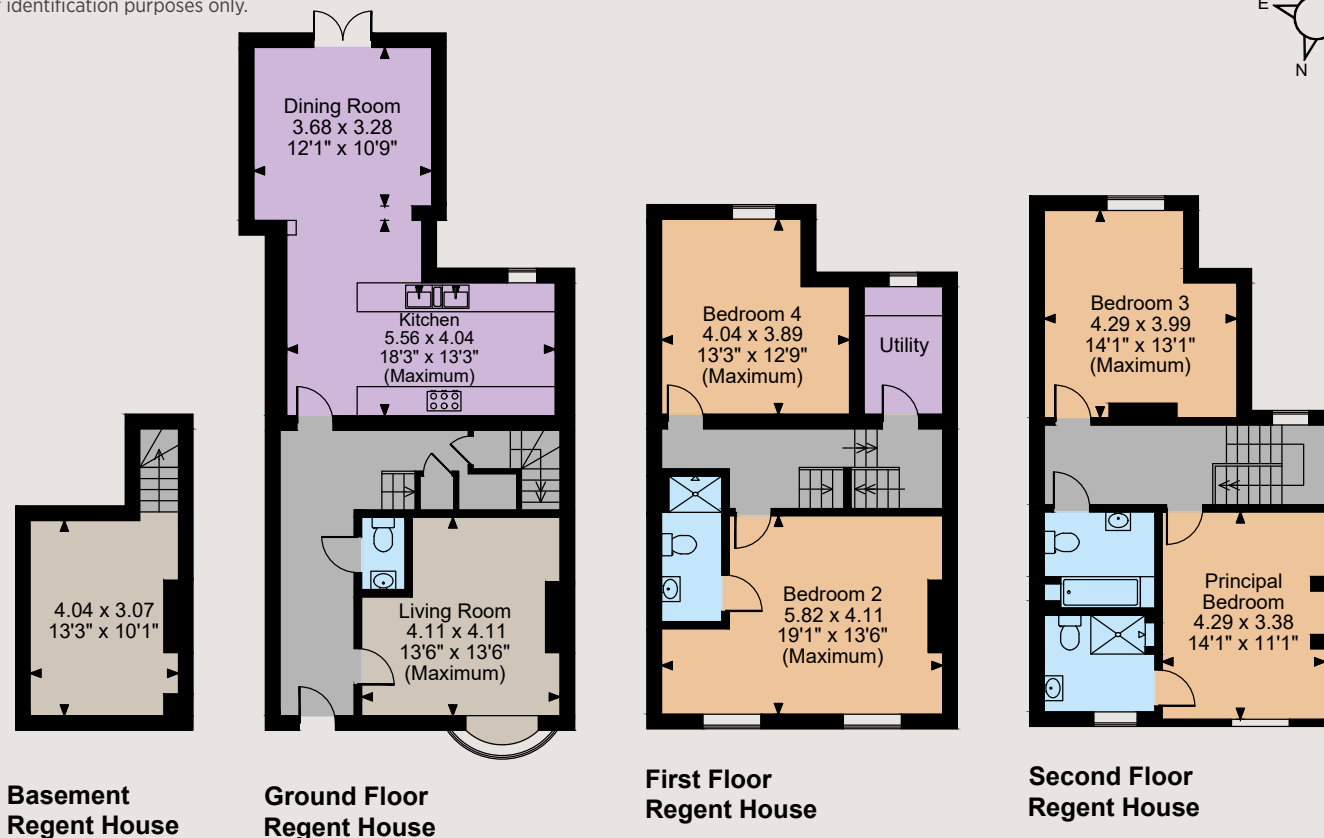
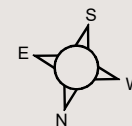


Please note, the furniture in this image has been virtually staged.





Regent House  
House internal area 1,837 sq ft (170 sq m)  
Basement area 136 sq ft (13 sq m)  
Total internal area 1,973sq ft (183 sq m)  
For identification purposes only.



The position & size of doors, windows, appliances and other features are approximate only.  
© ehouse. Unauthorised reproduction prohibited. Drawing ref. dig/8569493/SS



## Directions

From Strutt & Parker's Odiham office, turn right on the High Street. The property can be found just moments away on your left.

## General

**Local Authority:** Hart District Council

**Services:** Mains water, electricity and drainage.

Gas fired heating

**Council Tax:** Unallocated

**Tenure:** Freehold

**Guide Price:** £1,090,000

## Odiham

82 High Street, Odiham, Hampshire RG29 1LP

**01256 702892**

odiham@struttandparker.com

struttandparker.com

## Guildford New Homes

215 - 217 High Street, Guildford, GU1 3BJ

**01483 957745**

southernnewhomes@struttandparker.com

struttandparker.com

@struttandparker

/struttandparker

Over 45 offices across England and Scotland,  
including Prime Central London



For the finer things in property.



**IMPORTANT NOTICE:** Strutt & Parker gives notice that: 1. These particulars do not constitute an offer or contract or part thereof. 2. All descriptions, photographs and plans are for guidance only and should not be relied upon as statements or representations of fact. All measurements are approximate and not necessarily to scale. Any prospective purchaser must satisfy themselves of the correctness of the information within the particulars by inspection or otherwise. 3. Strutt & Parker does not have any authority to give any representations or warranties whatsoever in relation to this property (including but not limited to planning/building regulations), nor can it enter into any contract on behalf of the Vendor. 4. Strutt & Parker does not accept responsibility for any expenses incurred by prospective purchasers in inspecting properties which have been sold, let or withdrawn. 5. We are able to refer you to SPF Private Clients Limited ("SPF") for mortgage broking services, and to Alexander James Interiors ("AJI"), an interior design service. Should you decide to use the services of SPF, we will receive a referral fee from them of 25% of the aggregate of the fee paid to them by you for the arrangement of a mortgage and any fee received by them from the product provider. Should you decide to use the services of AJI, we will receive a referral fee of 10% of the net income received by AJI for the services they provide to you. 6. If there is anything of particular importance to you, please contact this office and Strutt & Parker will try to have the information checked for you. Photographs taken Sept 2023. Particulars prepared Sept 2023. Strutt & Parker is a trading style of BNP Paribas Real Estate Advisory & Property Management UK Limited