

Highlever Road

North Kensington, W10



**STRUTT
& PARKER**

BNP PARIBAS GROUP

A beautifully presented four bedroom family house in the St. Quintin Conservation Area.

This non-basement, Edwardian family home is comprised over 2,000 sq ft on just three floors, boasting impressive proportions and an abundance of natural light.



2 RECEPTION ROOMS



4 BEDROOMS



3 BATHROOMS



FREEHOLD



2,014 SQ FT



**ASKING PRICE
£1,970,000**



The property

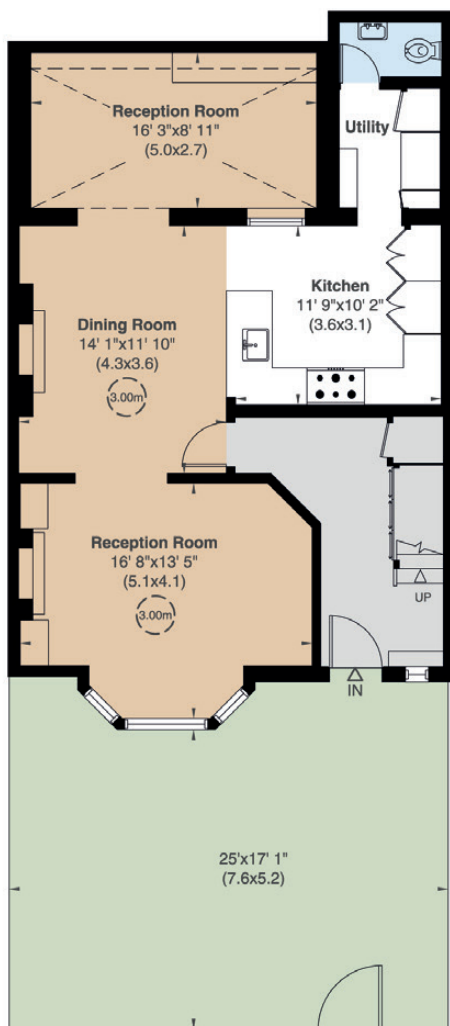
Set behind a charming patio garden, there is a spacious entrance hall leading on to an open plan kitchen/dining room which leads into a large, formal front reception room with a wonderful bay window. There is also a large conservatory/study area and a separate utility room. There are three bedrooms and two bathrooms on the first floor and, the principal suite occupies the top floor.

Location

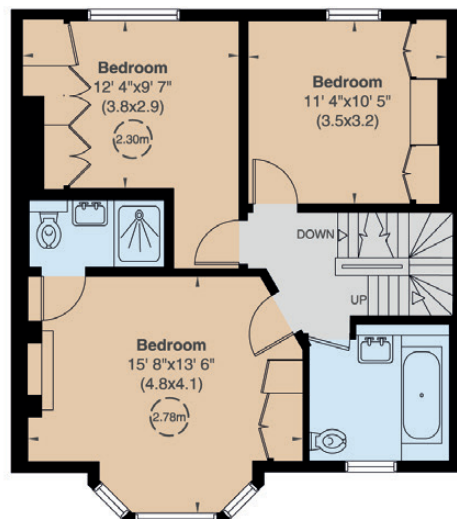
Highlever Road is in the St Quintin Conservation Area and runs north off St Quintin's Avenue. The open spaces of Kensington Memorial Park and Little Wormwood Scrubs Recreational Park are close by. Local shops and exciting restaurants of Golborne Road are within easy reach. The area also benefits from Kensington & Chelsea residents parking.



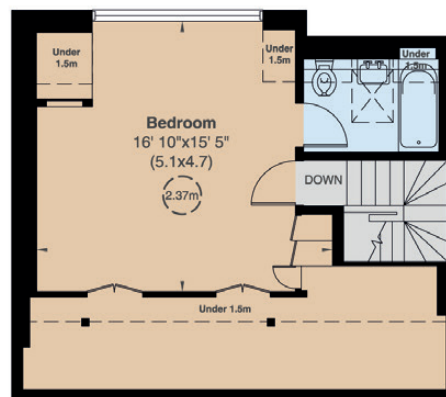




Ground Floor



First Floor



Second Floor

Floorplans

Gross internal area 1,964 sq ft (183 sq m)
including under 1.5m
1,847 sq ft (172 sq m) excluding under 1.5m
For identification purposes only.

General

Tenure: Freehold

Local Authority: Royal Borough of Kensington and Chelsea

Council Tax: Band G

EPC Rating: E

Parking: Resident's available

Broadband: Available

Notting Hill

303 Westbourne Grove, London, W11 2QA

020 7221 1111

nottinghill@struttandparker.com
struttandparker.com

IMPORTANT NOTICE: Strutt & Parker gives notice that: 1. These particulars do not constitute an offer or contract or part thereof. 2. All descriptions, photographs and plans are for guidance only and should not be relied upon as statements or representations of fact. All measurements are approximate and not necessarily to scale. Any prospective purchaser must satisfy themselves of the correctness of the information within the particulars by inspection or otherwise. 3. Strutt & Parker does not have any authority to give any representations or warranties whatsoever in relation to this property (including but not limited to planning/building regulations), nor can it enter into any contract on behalf of the Vendor. 4. Strutt & Parker does not accept responsibility for any expenses incurred by prospective purchasers in inspecting properties which have been sold, let or withdrawn. 5. We are able to refer you to SPF Private Clients Limited ("SPF") for mortgage broking services, and to Alexander James Interiors ("AJI"), an interior design service. Should you decide to use the services of SPF, we will receive a referral fee from them of 25% of the aggregate of the fee paid to them by you for the arrangement of a mortgage and any fee received by them from the product provider. Should you decide to use the services of AJI, we will receive a referral fee of 10% of the net income received by AJI for the services they provide to you. 6. If there is anything of particular importance to you, please contact this office and Strutt & Parker will try to have the information checked for you. Photographs taken August 2025. Particulars prepared August 2025. Strutt & Parker is a trading style of BNP Paribas Real Estate Advisory & Property Management UK Limited



@struttandparker

Over 50 offices across England and Scotland,
including Prime Central London

For the finer things in property.

**STRUTT
& PARKER**

BNP PARIBAS GROUP