



Hobury Street, Chelsea, SW10

For the finer things in property.

**STRUTT
& PARKER**

BNP PARIBAS GROUP

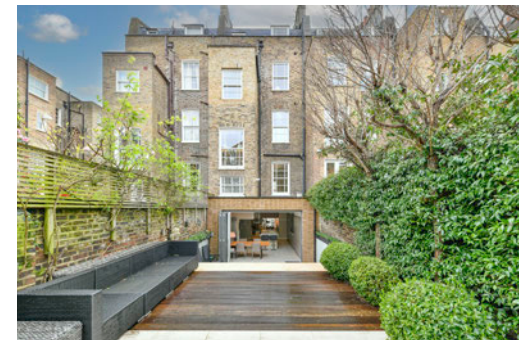
Hobury Street, Chelsea, SW10

A stunning, modernised, five-bedroom Ten Acre Estate house with large garden.

Principal suite | Four further bedrooms | Two family bathrooms | Drawing room | Sitting room | Kitchen w/dining area | Large garden (675 sq ft) | Utility room | Guest cloakroom
EPC Rating C

A beautifully modernised five-bedroom white stucco fronted Ten Acre house with a stunning garden. Enjoying 2430 sq ft of well-appointed space, bright aspect, high ceilings throughout and unique features; most notably that it is wider than most Ten Acre Estate houses at nearly 13 ft / 4 m wide.

The 'Ten Acre Estate' is a hugely popular enclave of quiet, wide, tree-lined streets situated between the King's Road and Fulham Road in the heart of Chelsea. A very community driven residential area, favoured by families, consisting of some of the oldest and most wonderful houses that Chelsea has to offer.



Terms

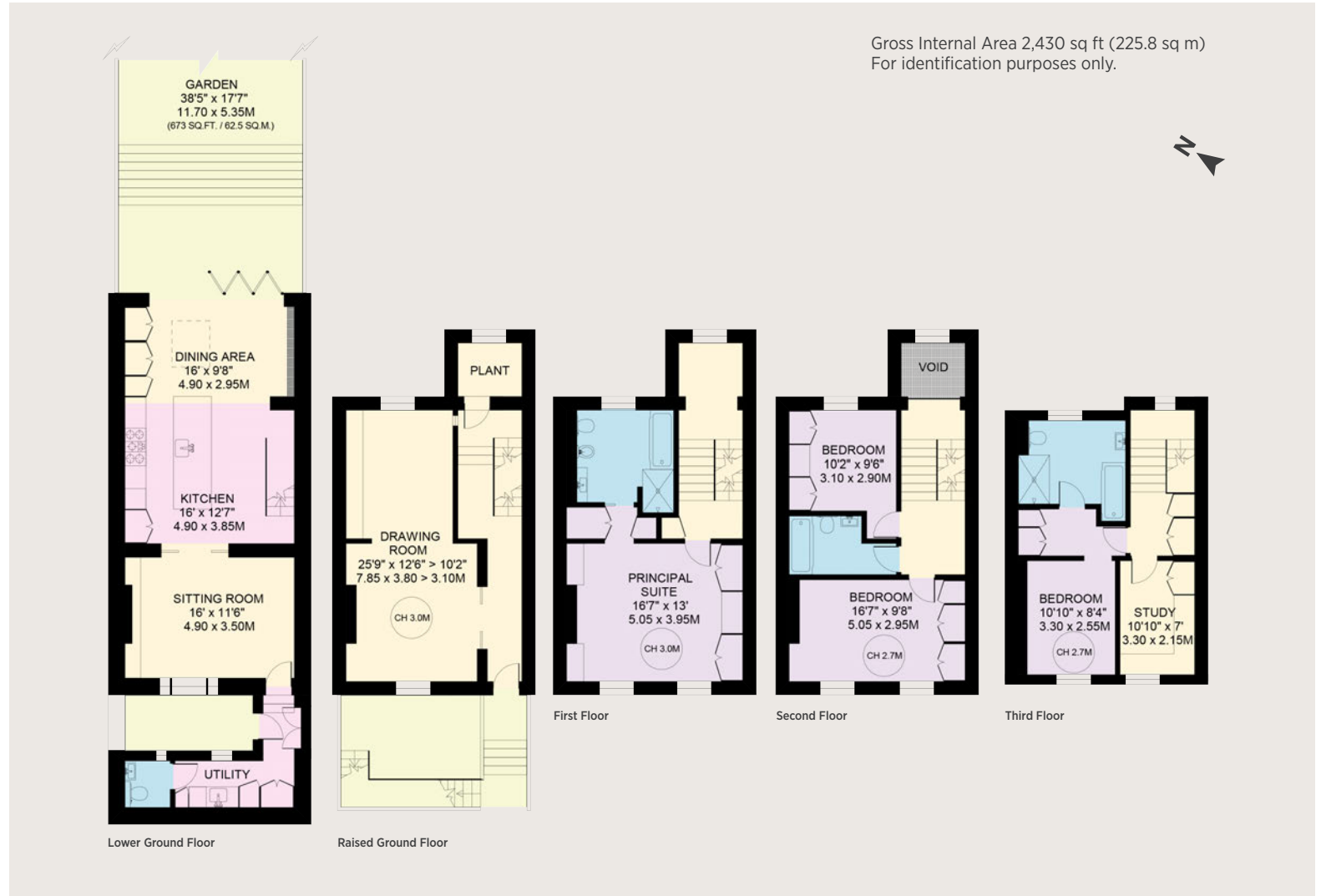
Tenure: Freehold

Council Tax: Band H

Local Authority: The Royal Borough of Kensington and Chelsea

Asking Price: £4,950,000





Chelsea SW10

140 Fulham Road, London, SW10 9PY

020 7373 1010

chelseaSW10@struttandparker.com

IMPORTANT NOTICE

Strutt & Parker gives notice that: 1. These particulars do not constitute an offer or contract or part thereof. 2. All descriptions, photographs and plans are for guidance only and should not be relied upon as statements or representations of fact. All measurements are approximate and not necessarily to scale. Any prospective purchaser must satisfy themselves of the correctness of the information within the particulars by inspection or otherwise. 3. Strutt & Parker does not have any authority to give any representations or warranties whatsoever in relation to this property (including but not limited to planning/building regulations), nor can it enter into any contract on behalf of the Vendor. 4. Strutt & Parker does not accept responsibility for any expenses incurred by prospective purchasers in inspecting properties which have been sold, let or withdrawn. 5. We are able to refer you to SPF Private Clients Limited ("SPF") for mortgage broking services, and to Alexander James Interiors ("AJI"), an interior design service. Should you decide to use the services of SPF, we will receive a referral fee from them of 25% of the aggregate of the fee paid to them by you for the arrangement of a mortgage and any fee received by them from the product provider. Should you decide to use the services of AJI, we will receive a referral fee of 10% of the net income received by AJI for the services they provide to you. 6. If there is anything of particular importance to you, please contact this office and Strutt & Parker will try to have the information checked for you. Photographs taken April 2024. Particulars prepared April 2024 Strutt & Parker is a trading style of BNP Paribas Real Estate Advisory & Property Management UK Limited.



Over 45 offices across England and Scotland,
including Prime Central London

For the finer things in property.

