



St Albans Mansions, Kensington Court Place, Kensington, W8

For the finer things in property.

**STRUTT  
& PARKER**

BNP PARIBAS GROUP

## St Albans Mansions, Kensington Court Place, Kensington, W8

A lateral and very well presented raised ground floor three/four bedroom apartment in this highly regarded portered Victorian mansion block located in the sought after De Vere Conservation Area, Kensington.

The property comprises approximately 2,017 sq ft and good volume throughout with a south facing reception room and eat-in kitchen for entertaining. This popular period mansion building also benefits a resident porter and a lift.

St Albans Mansions is located in Kensington Court Place and therefore benefits from the excellent transport and shopping facilities of Kensington High Street. The open spaces of Kensington Gardens and Hyde Park are located nearby.

Entrance hallway | Reception room | Kitchen/ breakfast room | Principal bedroom with en suite bathroom and walk in wardrobe  
Bedroom two with en suite bathroom | Bedroom three with en suite shower room | Study/ bedroom | Guest cloakroom | Resident porter  
Lift | EPC Rating D

### Terms

**Tenure:** Leasehold expiry 25/03/2134 therefore approximately 109 years remaining  
**Service Charge:** For the period 1.04.24 to 30.06.24 approximately £2,296.75 (which includes a contribution to the reserve fund).

**Ground Rent:** Approximately £500 per annum

**Council Tax:** Band H

**Local Authority:** The Royal Borough of Kensington and Chelsea

**Asking Price:** £3,750,000

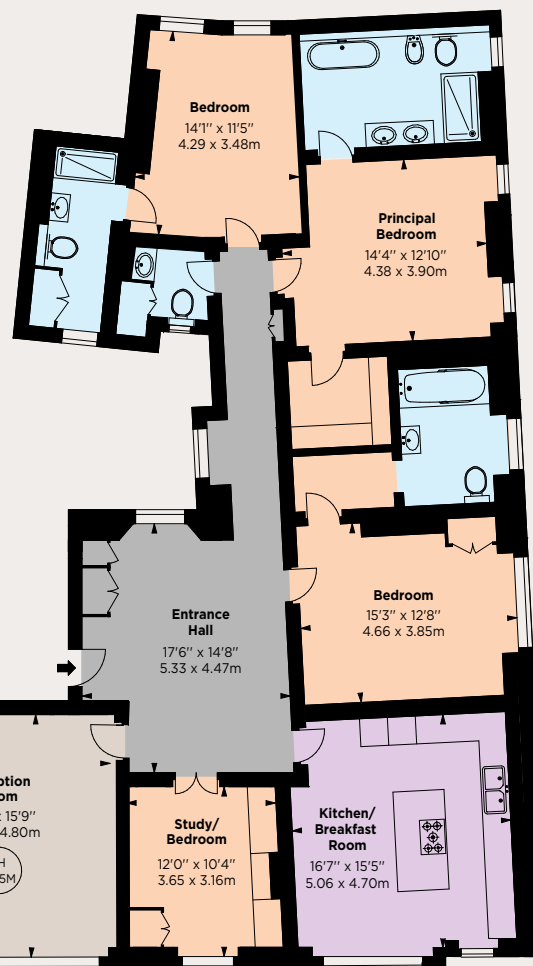






Approximate gross internal area 2,017 sq ft (187.63 sq m)  
For identification purposes only.

Key :  
CH - Ceiling Height



Raised Ground Floor



## Kensington

103 Kensington Church Street, London W8 7LN

020 7938 3666

kensington@struttandparker.com

### IMPORTANT NOTICE

Strutt & Parker gives notice that: 1. These particulars do not constitute an offer or contract or part thereof. 2. All descriptions, photographs and plans are for guidance only and should not be relied upon as statements or representations of fact. All measurements are approximate and not necessarily to scale. Any prospective purchaser must satisfy themselves of the correctness of the information within the particulars by inspection or otherwise. 3. Strutt & Parker does not have any authority to give any representations or warranties whatsoever in relation to this property (including but not limited to planning/building regulations), nor can it enter into any contract on behalf of the Vendor. 4. Strutt & Parker does not accept responsibility for any expenses incurred by prospective purchasers in inspecting properties which have been sold, let or withdrawn. 5. We are able to refer you to SPF Private Clients Limited ("SPF") for mortgage broking services, and to Alexander James Interiors ("AJI"), an interior design service. Should you decide to use the services of SPF, we will receive a referral fee from them of 25% of the aggregate of the fee paid to them by you for the arrangement of a mortgage and any fee received by them from the product provider. Should you decide to use the services of AJI, we will receive a referral fee of 10% of the net income received by AJI for the services they provide to you. 6. If there is anything of particular importance to you, please contact this office and Strutt & Parker will try to have the information checked for you. Photographs taken April 2024. Particulars prepared April 2024. Strutt & Parker is a trading style of BNP Paribas Real Estate Advisory & Property Management UK Limited.



Over 50 offices across England and Scotland,  
including Prime Central London

For the finer things in property.

