



Kenton Court, Kensington, W14

For the finer things in property.

**STRUTT  
& PARKER**

BNP PARIBAS GROUP

## Kenton Court, Kensington, W14

A two-bedroom, two bathroom upper floor apartment situated on the sixth floor (with lift) of this popular portered block.

The apartment offers well-balanced accommodation throughout, providing an open-plan double reception and dining room, separate kitchen, principal bedroom with en suite, double bedroom and family bathroom. The apartment is South facing with wonderful natural light and plenty of storage.

Kenton Court is ideally located for all amenities of the Royal Borough with easy access to the West End and Heathrow Airport via M4. The open green spaces of Holland Park are also near by.

Entrance hall | Double reception room | Separate kitchen | Principal bedroom | Double bedroom | En suite | Shower room | Lift | EPC Rating C

### Terms

**Tenure:** Leasehold expires 24/12/2126

**Service Charge:** Approximately £9,383 and includes heating and hot water

**Ground Rent:** £25

**Council Tax:** Band G

**Local Authority:** The Royal Borough of Kensington and Chelsea

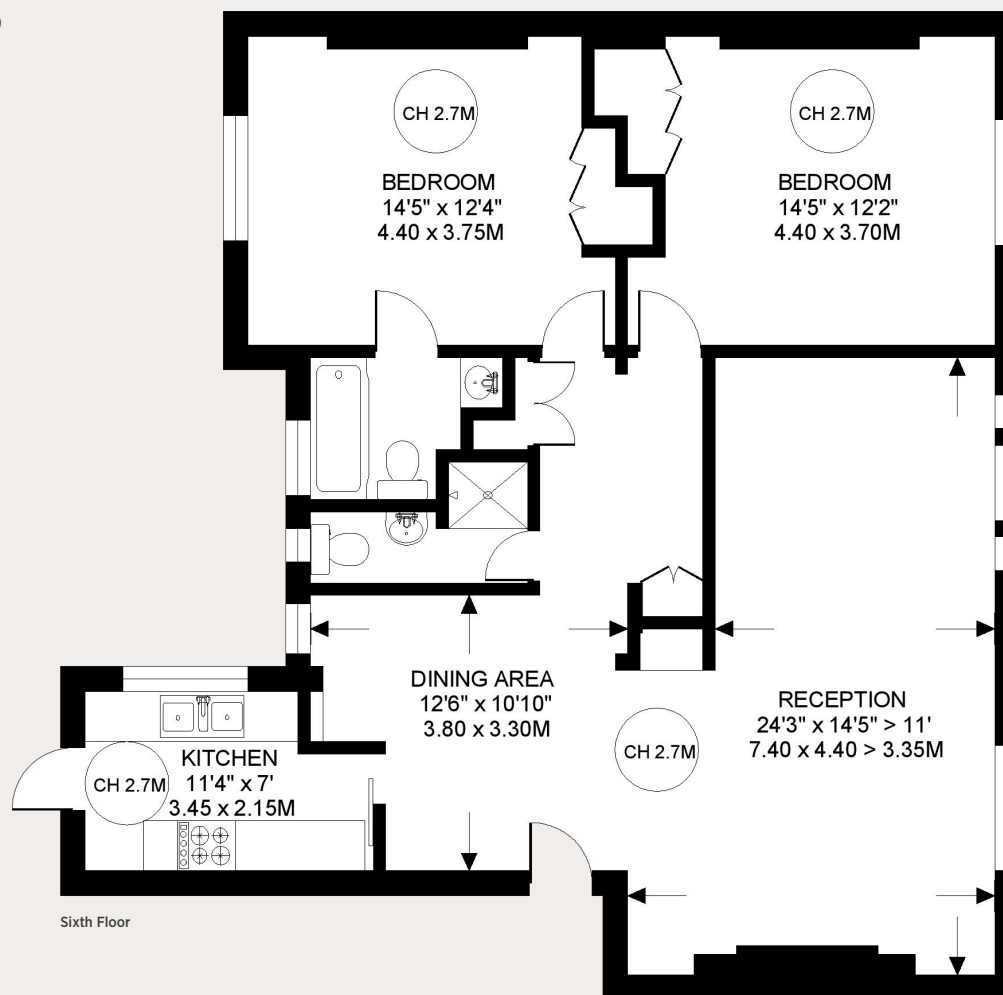
**Asking Price:** £900,000







Approximate gross internal area 1,034 sq ft (96.1 sq m)  
For identification purposes only.



Sixth Floor

## Kensington

103 Kensington Church Street, London W8 7LN

020 7938 3666

kensington@struttandparker.com

### IMPORTANT NOTICE

Strutt & Parker gives notice that: 1. These particulars do not constitute an offer or contract or part thereof. 2. All descriptions, photographs and plans are for guidance only and should not be relied upon as statements or representations of fact. All measurements are approximate and not necessarily to scale. Any prospective purchaser must satisfy themselves of the correctness of the information within the particulars by inspection or otherwise. 3. Strutt & Parker does not have any authority to give any representations or warranties whatsoever in relation to this property (including but not limited to planning/building regulations), nor can it enter into any contract on behalf of the Vendor. 4. Strutt & Parker does not accept responsibility for any expenses incurred by prospective purchasers in inspecting properties which have been sold, let or withdrawn. 5. We are able to refer you to SPF Private Clients Limited ("SPF") for mortgage broking services, and to Alexander James Interiors ("AJI"), an interior design service. Should you decide to use the services of SPF, we will receive a referral fee from them of 25% of the aggregate of the fee paid to them by you for the arrangement of a mortgage and any fee received by them from the product provider. Should you decide to use the services of AJI, we will receive a referral fee of 10% of the net income received by AJI for the services they provide to you. 6. If there is anything of particular importance to you, please contact this office and Strutt & Parker will try to have the information checked for you. Photographs taken September 2024. Particulars prepared September 2024. Strutt & Parker is a trading style of BNP Paribas Real Estate Advisory & Property Management UK Limited.



Over 50 offices across England and Scotland,  
including Prime Central London

For the finer things in property.

