



Kingstown Street, London

Kingstown Street, London, NW1

A spacious three bedroom family home, within easy reach of Primrose Hill village, Primrose Hill park, and The Regents Park.

The house is presented in good condition, and has been thoughtfully improved over recent years.

On the ground floor the entrance hall leads to the downstairs w.c., sitting/ dining room with bi-fold doors opening to the rear garden, and kitchen breakfast room.

On the first floor there is the principal bedroom with en-suite shower room, walk-in wardrobe and terrace. There are two additional double bedrooms, a separate w.c., and the family bathroom.

Externally there is a private garden that is south westerly facing and to the front of the house there is off-street parking.

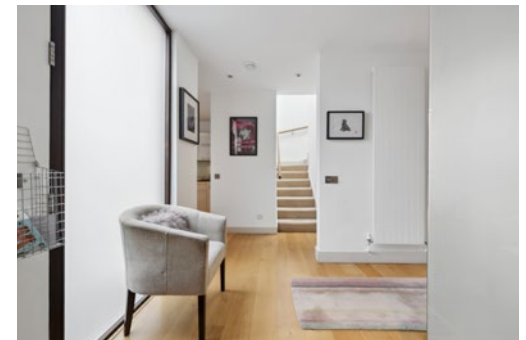
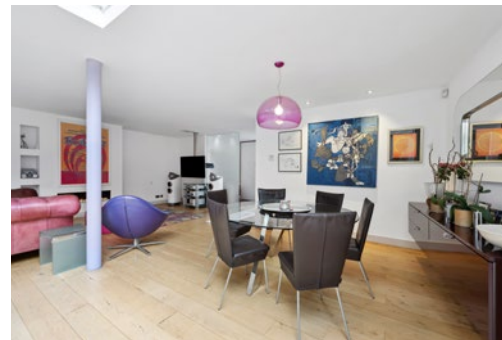
Terms

Tenure: Freehold

Council Tax: Band G

Local Authority: Camden Council

Asking Price: £3,000,000







Floorplans
Internal area 1,408 sq ft (131 sq m)
Balcony external area = 55 sq ft (5 sq m)
For identification purposes only.



The position & size of doors, windows, appliances and other features are approximate only.
© ehouse. Unauthorised reproduction prohibited. Drawing ref. dig/8575573/JHA

Hampstead

020 7591 2225

sarah.james@struttandparker.com

IMPORTANT NOTICE: Strutt & Parker gives notice that: 1. These particulars do not constitute an offer or contract or part thereof. 2. All descriptions, photographs and plans are for guidance only and should not be relied upon as statements or representations of fact. All measurements are approximate and not necessarily to scale. Any prospective purchaser must satisfy themselves of the correctness of the information within the particulars by inspection or otherwise. 3. Strutt & Parker does not have any authority to give any representations or warranties whatsoever in relation to this property (including but not limited to planning/building regulations), nor can it enter into any contract on behalf of the Vendor. 4. Strutt & Parker does not accept responsibility for any expenses incurred by prospective purchasers in inspecting properties which have been sold, let or withdrawn. 5. We are able to refer you to SPF Private Clients Limited ("SPF") for mortgage broking services, and to Alexander James Interiors ("AJI"), an interior design service. Should you decide to use the services of SPF, we will receive a referral fee from them of 25% of the aggregate of the fee paid to them by you for the arrangement of a mortgage and any fee received by them from the product provider. Should you decide to use the services of AJI, we will receive a referral fee of 10% of the net income received by AJI for the services they provide to you. 6. If there is anything of particular importance to you, please contact this office and Strutt & Parker will try to have the information checked for you. Photographs taken October 2023. Particulars prepared October 2023. Strutt & Parker is a trading style of BNP Paribas Real Estate Advisory & Property Management UK Limited.

STRUTT & PARKER
BNP PARIBAS GROUP

f /struttandparker

@struttandparker

struttandparker.com

Over 45 Offices across England and Scotland, including prime Central London



onTheMarket.com