

# Kinnerton Yard

Belgravia, SW1





## A well-appointed studio apartment set in a popular gated development in Knightsbridge.

Set in a secure gated development in the heart of Knightsbridge, and with access to Belgrave Square Gardens, this apartment would make an excellent first time buy, pied a terre or investment purchase.



**1 RECEPTION ROOM**



**1 BEDROOM**



**1 BATHROOM**



**LEASEHOLD**



**400 SQ FT**



**ASKING PRICE  
£720,000**



### The property

This studio apartment has been cleverly redesigned to offer clear and separate living and sleeping quarters. There is a modern fitted kitchen and bathroom.

The apartment has its own private entrance and overlooks a quaint communal courtyard.

As the owner of this property, you will benefit from access to Belgrave Square Gardens.

### Location

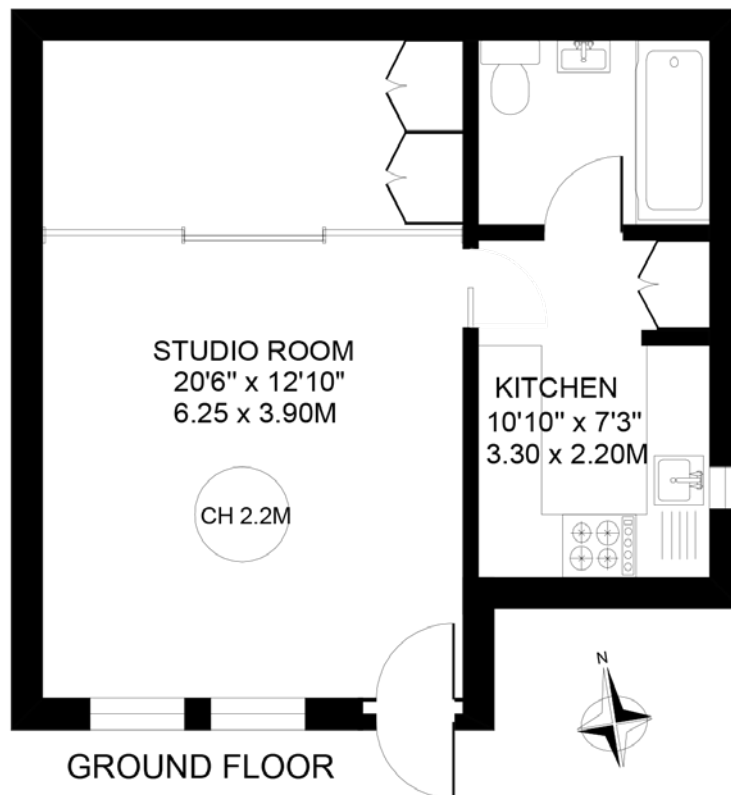
Kinnerton Yard is a gated development located at the North end of Kinnerton Street in Belgravia. The many and varied restaurants, bars and amenities of Belgravia and Knightsbridge are on your doorstep.











## Floorplans

**Gross internal area** 400 sq ft (37.1 sq m)

For identification purposes only.

## General

**Tenure:** Leasehold of 105 years 10 months starting 1st February 2010

**Local Authority:** City of Westminster

**Service Charge:** £1,776.74

**Ground Rent:** Peppercorn

**Council Tax:** Band G

**EPC Rating:** D

**Parking:** Residents' parking

**Broadband:** Available

**IMPORTANT NOTICE:** Strutt & Parker gives notice that: 1. These particulars do not constitute an offer or contract or part thereof. 2. All descriptions, photographs and plans are for guidance only and should not be relied upon as statements or representations of fact. All measurements are approximate and not necessarily to scale. Any prospective purchaser must satisfy themselves of the correctness of the information within the particulars by inspection or otherwise. 3. Strutt & Parker does not have any authority to give any representations or warranties whatsoever in relation to this property (including but not limited to planning/building regulations), nor can it enter into any contract on behalf of the Vendor. 4. Strutt & Parker does not accept responsibility for any expenses incurred by prospective purchasers in inspecting properties which have been sold, let or withdrawn. 5. We are able to refer you to SPF Private Clients Limited ("SPF") for mortgage broking services, and to Alexander James Interiors ("AJI"), an interior design service. Should you decide to use the services of SPF, we will receive a referral fee from them of 25% of the aggregate of the fee paid to them by you for the arrangement of a mortgage and any fee received by them from the product provider. Should you decide to use the services of AJI, we will receive a referral fee of 10% of the net income received by AJI for the services they provide to you. 6. If there is anything of particular importance to you, please contact this office and Strutt & Parker will try to have the information checked for you. Photographs taken May 2025. Particulars prepared May 2025. Strutt & Parker is a trading style of BNP Paribas Real Estate Advisory & Property Management UK Limited

## Knightsbridge & Belgravia

66 Sloane Street, London SW1X 9SH

**020 7235 9959**

Robert.french@struttandparker.com  
struttandparker.com



@struttandparker

Over 50 offices across England and Scotland,  
including Prime Central London

For the finer things in property.

