

LADBROKE ROAD

HOLLAND PARK W11





An impressive semi-detached six bedroom house with off street parking and a garage.

Built in the 1840's by William John Drew as one of four original pairs of semi-detached villas, this is one of the oldest houses of the Ladbrooke Estate. It is an elegant, wide house over just four floors, presented in immaculate condition.

The house offers enviable lateral accommodation and an excellent balance between formal and informal entertaining space and six outstanding bedroom suites.

The house also benefits from a double garage, light on three sides and good privacy set behind a walled front garden.





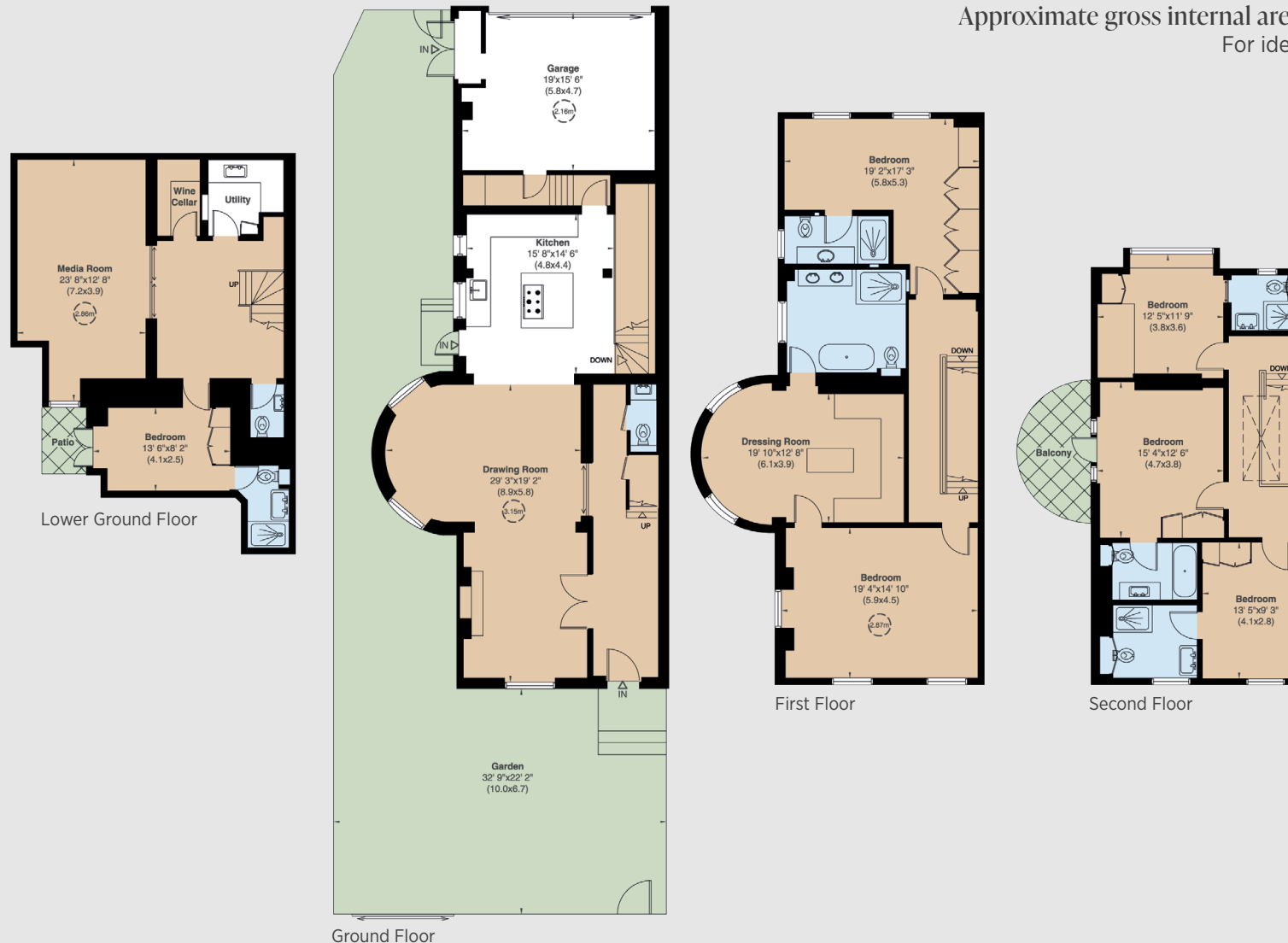
Ladbroke Road is a sought after, tree lined address, with the house situated towards the western end of the road, close to the corner of Lansdowne Road and therefore near the shopping and transport facilities of Notting Hill Gate and Holland Park Avenue. The green spaces of Holland Park are also nearby.

ACCOMMODATION

- | Entrance hall
- | Drawing room
- | Kitchen
- | Media room
- | Six bedrooms
- | Six bath/shower rooms
- | Dressing room
- | Utility room
- | Wine cellar
- | Two guest WC's
- | Balcony
- | Garden
- | Garage
- | EPC Rating C

TERMS

- Tenure: Freehold
- Council Tax: Band H
- Local Authority: The Royal Borough of Kensington and Chelsea
- Guide Price: £9,500,000



Notting Hill

303 Westbourne Grove, London, W11 2QA

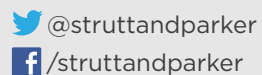
020 7221 1111

nottinghill@struttandparker.com

struttandparker.com

IMPORTANT NOTICE

Strutt & Parker gives notice that: 1. These particulars do not constitute an offer or contract or part thereof. 2. All descriptions, photographs and plans are for guidance only and should not be relied upon as statements or representations of fact. All measurements are approximate and not necessarily to scale. Any prospective purchaser must satisfy themselves of the correctness of the information within the particulars by inspection or otherwise. 3. Strutt & Parker does not have any authority to give any representations or warranties whatsoever in relation to this property (including but not limited to planning/building regulations), nor can it enter into any contract on behalf of the Vendor. 4. Strutt & Parker does not accept responsibility for any expenses incurred by prospective purchasers in inspecting properties which have been sold, let or withdrawn. 5. We are able to refer you to SPF Private Clients Limited ("SPF") for mortgage broking services, and to Alexander James Interiors ("AJI"), an interior design service. Should you decide to use the services of SPF, we will receive a referral fee from them of 25% of the aggregate of the fee paid to them by you for the arrangement of a mortgage and any fee received by them from the product provider. Should you decide to use the services of AJI, we will receive a referral fee of 10% of the net income received by AJI for the services they provide to you. 6. If there is anything of particular importance to you, please contact this office and Strutt & Parker will try to have the information checked for you. Photographs taken October 2023. Particulars prepared October 2023. Strutt & Parker is a trading style of BNP Paribas Real Estate Advisory & Property Management UK Limited.



Over 45 offices across England and Scotland,
including Prime Central London

For the finer things in property.

**STRUTT
& PARKER**

BNP PARIBAS GROUP