



Ladbroke Square

Notting Hill, W11

**STRUTT
& PARKER**

BNP PARIBAS GROUP



A superb three bedroom flat with a large roof terrace and beautiful views over Ladbroke Square.

A wonderful, architecturally designed three bedroom flat on the third and fourth floors of this handsome, period building in a highly sought after location. It has two lovely terraces, access to and outstanding views over the beautifully maintained gardens of Ladbroke Square.

The property is a qualifying address for membership of Ladbroke Square Gardens (subject to application – fee payable).

Ladbroke Square is a highly sought after address and is extremely well located for all the shopping and transport facilities of Notting Hill and Holland Park. The beautiful communal garden of Ladbroke Square is one of the largest private communal garden squares in London.

Floorplans

Gross internal area 1,200 sq ft (111.48 sq m)
For identification purposes only.

General

Tenure: 999 years from 1/1/2000 plus a Share of the Freehold

Local Authority: Royal Borough of Kensington & Chelsea

Service Charge: Approximately £2,080 per annum

Council Tax: Band G

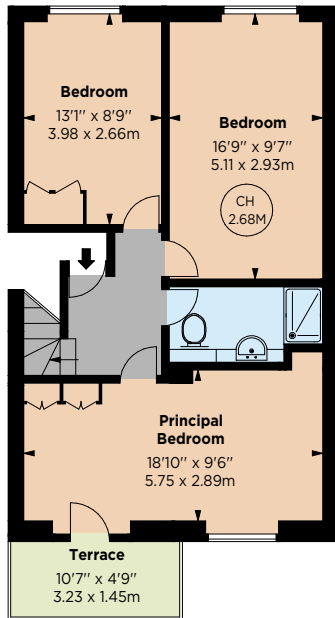
EPC Rating: D

Parking: RBKC resident's parking permit

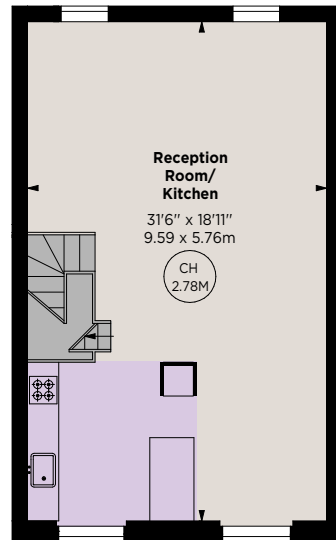
Broadband: Available

Asking Price: £2,500,000

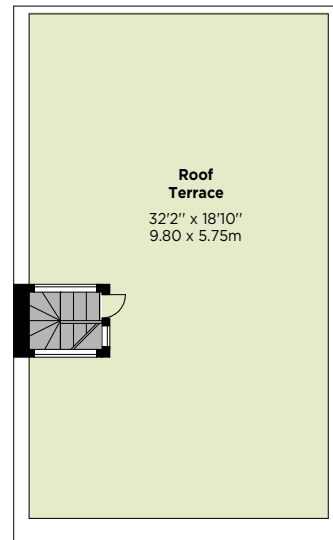
Key :
CH - Ceiling Height



THIRD FLOOR



FOURTH FLOOR



FIFTH FLOOR



IMPORTANT NOTICE: Strutt & Parker gives notice that: 1. These particulars do not constitute an offer or contract or part thereof. 2. All descriptions, photographs and plans are for guidance only and should not be relied upon as statements or representations of fact. All measurements are approximate and not necessarily to scale. Any prospective purchaser must satisfy themselves of the correctness of the information within the particulars by inspection or otherwise. 3. Strutt & Parker does not have any authority to give any representations or warranties whatsoever in relation to this property (including but not limited to planning/building regulations), nor can it enter into any contract on behalf of the Vendor. 4. Strutt & Parker does not accept responsibility for any expenses incurred by prospective purchasers in inspecting properties which have been sold, let or withdrawn. 5. We are able to refer you to SPF Private Clients Limited ("SPF") for mortgage broking services, and to Alexander James Interiors ("AJI"), an interior design service. Should you decide to use the services of SPF, we will receive a referral fee from them of 25% of the aggregate of the fee paid to them by you for the arrangement of a mortgage and any fee received by them from the product provider. Should you decide to use the services of AJI, we will receive a referral fee of 10% of the net income received by AJI for the services they provide to you. 6. If there is anything of particular importance to you, please contact this office and Strutt & Parker will try to have the information checked for you. Photographs taken April 2025. Particulars prepared April 2025. Strutt & Parker is a trading style of BNP Paribas Real Estate Advisory & Property Management UK Limited

Notting Hill

303 Westbourne Grove, London, W11 2QA

020 7221 1111

nottinghill@struttandparker.com
struttandparker.com



@struttandparker

Over 50 offices across England and Scotland,
including Prime Central London

For the finer things in property.

