



Lansdowne Crescent, Notting Hill, W11

STRUTT & PARKER
BNP PARIBAS GROUP 

Lansdowne Crescent, Notting Hill, W11

A well presented three bedroom duplex apartment with far reaching views across West London.

Arranged over the top two floors of a Grade II listed stucco-fronted building, this lovely three bedroom flat offers excellent entertaining space, and a right of access to beautiful communal gardens. The well-arranged layout allows for a spacious reception room and a good sized eat-in kitchen leading out to a large balcony with views over the communal gardens.

Lansdowne Crescent is an extremely pretty street in the heart of the garden square landscape of Notting Hill. A highly regarded address, it benefits from all the shopping and transport facilities of Westbourne Grove and Notting Hill Gate. It is also within easy reach of the West End, the city and Heathrow Airport.

Entrance hall | Reception room | Kitchen | Three bedrooms | Ensuite bathroom | Shower room
Terrace | Access to communal gardens | EPC rating D



Terms

Tenure: Leasehold, 250 years from 25/12/1971, plus a **Share of Freehold**
Service Charge: Approximately £2,400 per annum

Council Tax: Band G

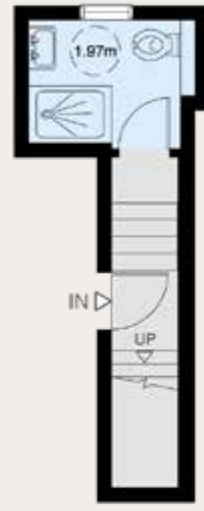
Local Authority: The Royal Borough of Kensington and Chelsea

Price: £1,795,000

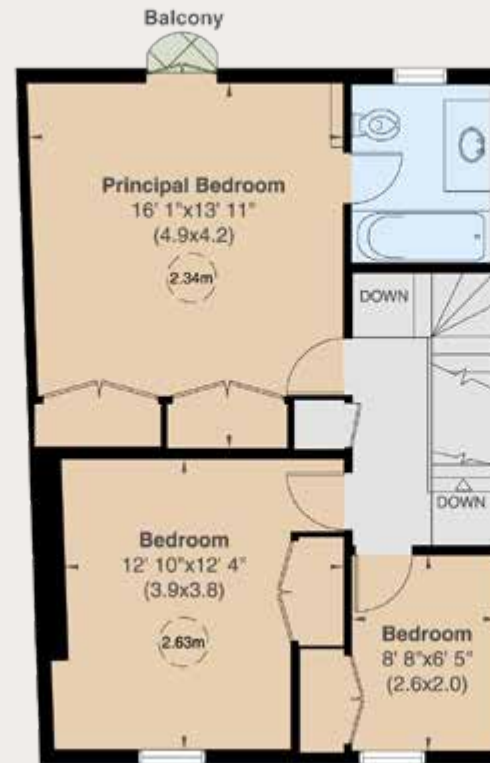




Approximate gross internal area 1,194 sq ft (111 sq m) including under 1.5m
1,086 sq ft (101 sq m) excluding under 1.5m
CH = Ceiling Heights
For identification purposes only.



Second Floor



Third Floor



Fourth Floor

Notting Hill

303 Westbourne Grove, London, W11 2QA

020 7221 1111

nottinghill@struttandparker.com

IMPORTANT NOTICE

Strutt & Parker gives notice that: 1. These particulars do not constitute an offer or contract or part thereof. 2. All descriptions, photographs and plans are for guidance only and should not be relied upon as statements or representations of fact. All measurements are approximate and not necessarily to scale. Any prospective purchaser must satisfy themselves of the correctness of the information within the particulars by inspection or otherwise. 3. Strutt & Parker does not have any authority to give any representations or warranties whatsoever in relation to this property (including but not limited to planning/building regulations), nor can it enter into any contract on behalf of the Vendor. 4. Strutt & Parker does not accept responsibility for any expenses incurred by prospective purchasers in inspecting properties which have been sold, let or withdrawn. 5. We are able to refer you to SPF Private Clients Limited ("SPF") for mortgage broking services, and to Alexander James Interiors ("AJI"), an interior design service. Should you decide to use the services of SPF, we will receive a referral fee from them of 25% of the aggregate of the fee paid to them by you for the arrangement of a mortgage and any fee received by them from the product provider. Should you decide to use the services of AJI, we will receive a referral fee of 10% of the net income received by AJI for the services they provide to you. 6. If there is anything of particular importance to you, please contact this office and Strutt & Parker will try to have the information checked for you. Photographs taken June 2019. Particulars prepared May 2022. Strutt & Parker is a trading style of BNP Paribas Real Estate Advisory & Property Management UK Limited.