



Lexham Gardens

Kensington, W8

**STRUTT
& PARKER**

BNP PARIBAS GROUP

Perfectly positioned on Lexham Gardens with views over the communal gardens.

This spacious apartment is arranged over the raised ground floor and lower ground floor of a handsome period building.



1 RECEPTION ROOM



2 BEDROOMS



2 BATHROOMS



SHARE OF FREEHOLD



1,236 SQ FT



**ASKING PRICE
£975,000**



The property

The property consists of a well-proportioned reception room with high ceilings (3.48M), a well-equipped separate kitchen. A generous principal bedroom with en suite bathroom and separate dressing room benefitting from a wall of fitted storage. A further double bedroom, separate bathroom with shower and a study (with direct access to the private patio). There is also a spacious utility room. The private communal gardens are immaculately presented and are highly sought after within the Royal Borough of Kensington & Chelsea.

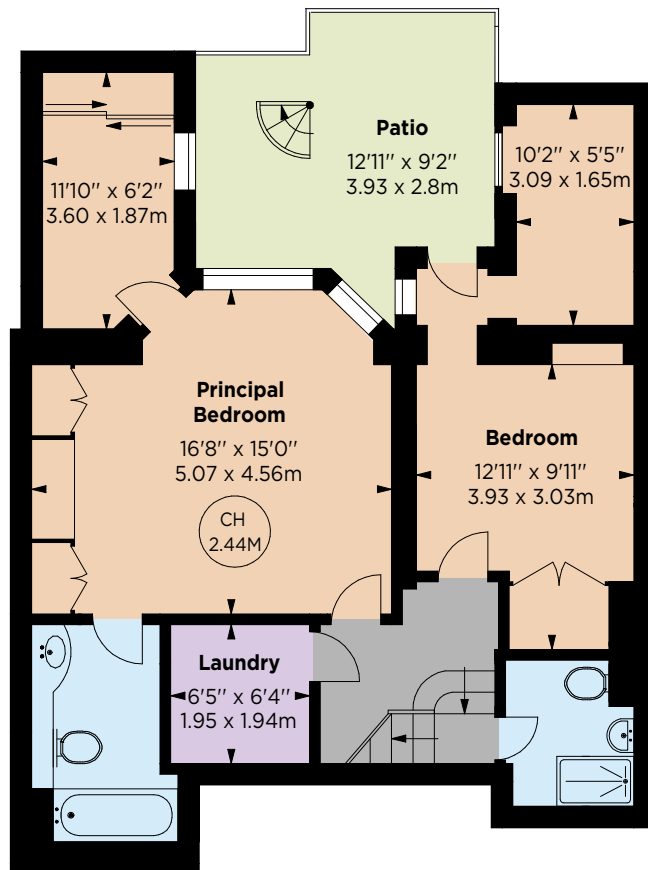
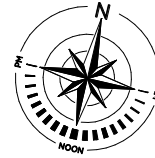
Location

Lexham Gardens (situated within a conservation area) is located south of Kensington High Street and therefore benefits from the excellent shopping and transport facilities in the area. Holland Park and Kensington Gardens are also nearby.

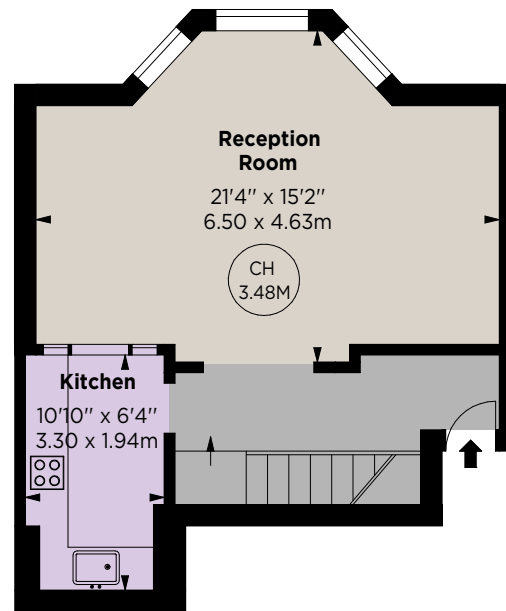




Key :
CH - Ceiling Height



LOWER
GROUND FLOOR



RASIED
GROUND FLOOR

Floorplans

Gross internal area 1,177 sq ft (109.34 sq m)
For identification purposes only.

General

Tenure: Share of Freehold, 999 years from 25 December 1976

Local Authority: The Royal Borough of Kensington and Chelsea

Service Charge: £454 paid monthly

Ground Rent: Peppercorn

Council Tax: Band G

EPC Rating: F

Parking: Resident permit parking available

Broadband: Available

IMPORTANT NOTICE: Strutt & Parker gives notice that: 1. These particulars do not constitute an offer or contract or part thereof. 2. All descriptions, photographs and plans are for guidance only and should not be relied upon as statements or representations of fact. All measurements are approximate and not necessarily to scale. Any prospective purchaser must satisfy themselves of the correctness of the information within the particulars by inspection or otherwise. 3. Strutt & Parker does not have any authority to give any representations or warranties whatsoever in relation to this property (including but not limited to planning/building regulations), nor can it enter into any contract on behalf of the Vendor. 4. Strutt & Parker does not accept responsibility for any expenses incurred by prospective purchasers in inspecting properties which have been sold, let or withdrawn. 5. We are able to refer you to SPF Private Clients Limited ("SPF") for mortgage broking services, and to Alexander James Interiors ("AJI"), an interior design service. Should you decide to use the services of SPF, we will receive a referral fee from them of 25% of the aggregate of the fee paid to them by you for the arrangement of a mortgage and any fee received by them from the product provider. Should you decide to use the services of AJI, we will receive a referral fee of 10% of the net income received by AJI for the services they provide to you. 6. If there is anything of particular importance to you, please contact this office and Strutt & Parker will try to have the information checked for you. Photographs taken February 2025, garden image taken September 2023. Particulars prepared February 2025. Strutt & Parker is a trading style of BNP Paribas Real Estate Advisory & Property Management UK Limited

Kensington

103 Kensington Church Street, London W8 7LN

020 7938 3666

kensington@struttandparker.com
struttandparker.com



@struttandparker

Over 50 offices across England and Scotland,
including Prime Central London

For the finer things in property.

