

Lexham Mews

Kensington, W8



**STRUTT
& PARKER**

BNP PARIBAS GROUP

A newly refurbished freehold mews house, perfectly positioned in the heart of Kensington.

The property has been completely remodelled to an exacting standard, offering approximately 1,568 sq ft of internal living space with an additional 150 sq ft of private terraces.



1 RECEPTION ROOM



3 BEDROOMS



3 BATHROOMS



FREEHOLD



1,568 SQ FT



**ASKING PRICE
£2,500,000**



The property

The property combines a classic exterior with a modern, technology-led finish, featuring bespoke oak flooring, Arabescato marble detailing, and a comprehensive home automation system including underfloor heating, air conditioning, and Crestron/Lutron controls. The upper floor is designed for both entertaining and daily living, featuring an open-plan layout and a kitchen fitted with a full suite of Miele appliances, a wine cooler, and a Quooker tap. There are three double bedroom suites, each with its own en-suite bathroom, while the principal suite further benefits from a dedicated private dressing room. Private outdoor space is accessible via terraces on both the first and second floors.

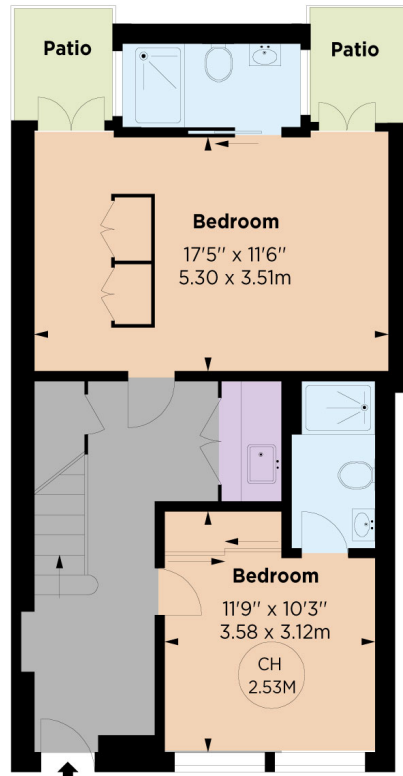
Location

Lexham Mews is a quiet cobbled Mews just off Lexham Gardens, south of Kensington High Street, and therefore benefits from the shopping and transport facilities in the area (Kensington High Street - District and Circle line) and Earls Court (Piccadilly and District Line). The green spaces of Holland Park and Kensington Gardens are also nearby.

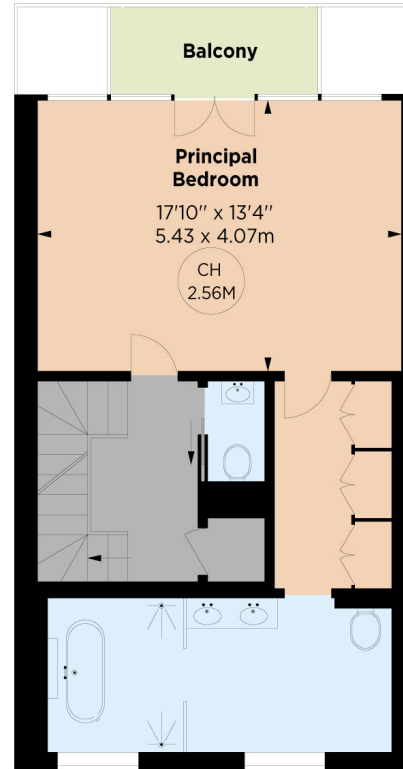




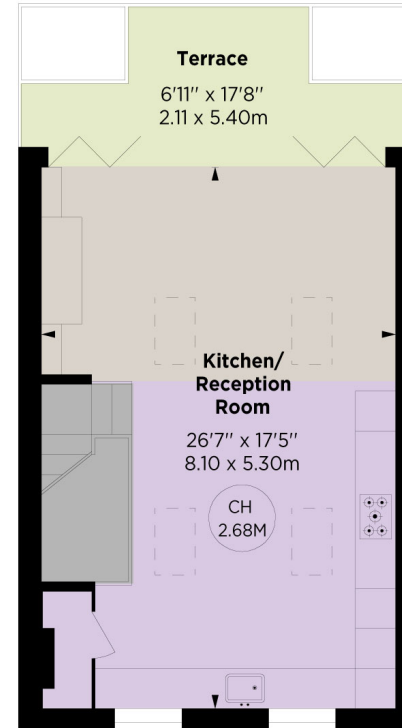
Key :
CH - Ceiling Height



GROUND FLOOR



FIRST FLOOR



SECOND FLOOR

Floorplans

Gross internal area 1,568 sq ft (145.69 sq m)

For identification purposes only.

General

Tenure: Freehold

Local Authority: The Royal Borough of Kensington and Chelsea

Council Tax: Band H

EPC Rating: D

Parking: Residents' permit

Mobile coverage and broadband: Information can be found here: <https://checker.ofcom.org.uk/en-gb/mobile-coverage>

IMPORTANT NOTICE: Strutt & Parker gives notice that: 1. These particulars do not constitute an offer or contract or part thereof. 2. All descriptions, photographs and plans are for guidance only and should not be relied upon as statements or representations of fact. All measurements are approximate and not necessarily to scale. Any prospective purchaser must satisfy themselves of the correctness of the information within the particulars by inspection or otherwise. 3. Strutt & Parker does not have any authority to give any representations or warranties whatsoever in relation to this property (including but not limited to planning/building regulations), nor can it enter into any contract on behalf of the Vendor. 4. Strutt & Parker does not accept responsibility for any expenses incurred by prospective purchasers in inspecting properties which have been sold, let or withdrawn. 5. We are able to refer you to SPF Private Clients Limited ("SPF") for mortgage broking services, and to Alexander James Interiors ("AJI"), an interior design service. Should you decide to use the services of SPF, we will receive a referral fee from them of 25% of the aggregate of the fee paid to them by you for the arrangement of a mortgage and any fee received by them from the product provider. Should you decide to use the services of AJI, we will receive a referral fee of 10% of the net income received by AJI for the services they provide to you. 6. If there is anything of particular importance to you, please contact this office and Strutt & Parker will try to have the information checked for you. Photographs taken February 2026. Particulars prepared February 2026. Strutt & Parker is a trading style of BNP Paribas Real Estate Advisory & Property Management UK Limited

Kensington

103 Kensington Church Street, London W8 7LN

020 7938 3666

kensington@struttandparker.com

struttandparker.com



@struttandparker

Over 50 offices across England and Scotland,
including Prime Central London

For the finer things in property.

