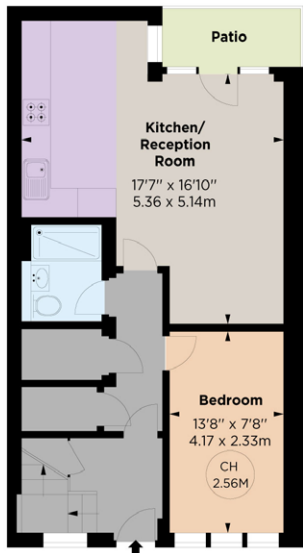


Lexham Mews

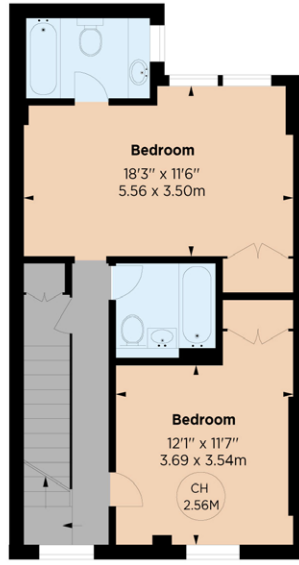
Kensington, W8



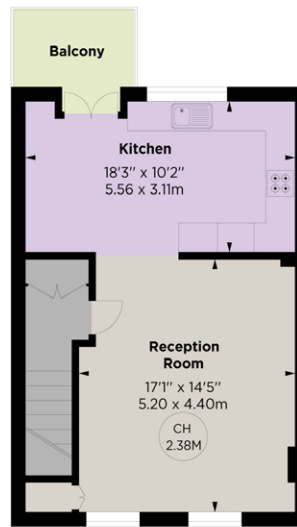
Key :
CH - Ceiling Height



GROUND FLOOR



FIRST FLOOR



SECOND FLOOR



A rarely available, unmodernised mews house, offering potential for redevelopment.

Discreetly tucked away in the historic Lexham Mews, this classic mews house presents an opportunity for an incoming purchaser to undertake a full-scale refurbishment.

Retaining its authentic character, the property offers an exciting project for those seeking to create a bespoke home in the heart of Stratford Village. The current footprint offers a versatile layout, ideally suited for a contemporary reconfiguration that maximises light and volume. Whether finished as a grand pied-à-terre or a family home, the property represents a wonderful development prospect in one of W8's most tranquil residential pockets.

Lexham Mews is a quiet cobbled Mews just off Lexham Gardens, south of Kensington High Street, and therefore benefits from the shopping and transport facilities in the area (Kensington High Street - District and Circle line) and Earls Court (Piccadilly and District Line). The green spaces of Holland Park and Kensington Gardens are also nearby.

Floorplans

Gross internal area 1,676 sq ft (155.78 sq m)
For identification purposes only.

General

Tenure: Freehold
Local Authority: The Royal Borough of Kensington and Chelsea
Council Tax: Band H
EPC Rating: G
Parking: Residents' permit
Mobile coverage and broadband: Information can be found here: <https://checker.ofcom.org.uk/en-gb/mobile-coverage>
Asking Price: £1,825,000

Kensington

103 Kensington Church Street, London W8 7LN

020 7938 3666

kensington@struttandparker.com
struttandparker.com

IMPORTANT NOTICE: Strutt & Parker gives notice that: 1. These particulars do not constitute an offer or contract or part thereof. 2. All descriptions, photographs and plans are for guidance only and should not be relied upon as statements or representations of fact. All measurements are approximate and not necessarily to scale. Any prospective purchaser must satisfy themselves of the correctness of the information within the particulars by inspection or otherwise. 3. Strutt & Parker does not have any authority to give any representations or warranties whatsoever in relation to this property (including but not limited to planning/building regulations), nor can it enter into any contract on behalf of the Vendor. 4. Strutt & Parker does not accept responsibility for any expenses incurred by prospective purchasers in inspecting properties which have been sold, let or withdrawn. 5. We are able to refer you to SPF Private Clients Limited ("SPF") for mortgage broking services, and to Alexander James Interiors ("AJI"), an interior design service. Should you decide to use the services of SPF, we will receive a referral fee from them of 25% of the aggregate of the fee paid to them by you for the arrangement of a mortgage and any fee received by them from the product provider. Should you decide to use the services of AJI, we will receive a referral fee of 10% of the net income received by AJI for the services they provide to you. 6. If there is anything of particular importance to you, please contact this office and Strutt & Parker will try to have the information checked for you. Photographs taken February 2026. Particulars prepared February 2026. Strutt & Parker is a trading style of BNP Paribas Real Estate Advisory & Property Management UK Limited



@struttandparker

Over 50 offices across England and Scotland,
including Prime Central London

For the finer things in property.

