

Helmsdale
Littleworth Road



Strutt
& Parker

Land and property. Since 1885.

An outstanding three-bedroom bungalow with elegant, understated modern styling, set in an exclusive position in The Sands, surrounded by woodland yet within easy reach of bustling Farnham.

Helmsdale is an exceptional three-bedroom detached bungalow, occupying a secluded and highly desirable position in the village of The Sands, backing onto woodland and moments from Farnham Golf Club. The property offers beautifully presented accommodation with a contemporary feel, high-specification finishes and excellent natural light throughout, all arranged on a single level for flexible modern living, with views over the gardens to the woodland beyond.

The principal reception room is a generously proportioned sitting room, featuring carpeted flooring, a wood-burning stove and French doors opening onto the rear terrace. This is complemented by a triple-aspect family room, flooded with natural light and benefiting from a full-height window and additional French windows to the side garden. The open-plan kitchen and dining area provides further living and entertaining space, with tiled flooring, contemporary cabinetry, wooden worktops and a range cooker, together with direct access to the rear terrace for seamless indoor-outdoor living. The three bedrooms are all doubles, offering flexibility for use as additional reception space if required. The principal bedroom includes a walk-in wardrobe and en suite shower room, while a further bedroom also benefits from en suite facilities. A family bathroom with over-bath shower completes the accommodation.

The property is approached via a gravel driveway framed by landscaped borders with mature planting. To the rear, the generous gardens are predominantly laid to lawn with a stone-paved terrace providing an ideal space for outdoor dining. The gardens also feature a summer house and pergola with espaliered fruit trees, and back directly onto woodland with open outlooks towards the adjoining golf course.



Location

The pretty and highly sought-after village of The Sands lies two miles to the east of the popular town of Farnham, surrounded by the beautiful countryside of the South Downs National Park. The village has a local pub, a parish church, a village hall and a recreation ground, while for leisure, Farnham Golf Club (The Sands) is right on its doorstep. The independent Barfield School is two miles away, while there are several outstanding-rated primary and secondary schools within the local area.

The Georgian town of Farnham offers an excellent choice of pubs, bars and restaurants including Côte, Pizza Express, Bill's & Zizzi, along with an extensive range of high street and independent shopping, and recreational facilities. The area offers easy access to the surrounding countryside with a network of footpaths and bridleways. Walking, cycling, fishing and riding are available at Alice Holt Forest and Frensham Little Pond, with sailing at the Great Pond. There is a mainline station at Farnham plus good access to the A3 and M3. Heathrow, Gatwick and Southampton Airports are all accessible in under an hour.

Postcode region: GU10

General

Local Authority: Guildford Borough Council
Services: Mains electricity, gas, water and drainage.
Council Tax: Band F
EPC Rating: D
Mobile and Broadband checker: Information can be found here <https://checker.ofcom.org.uk/en-gb/>

1,869 sq ft (174 sq m)

3 reception rooms

3 bedrooms

3 bathrooms

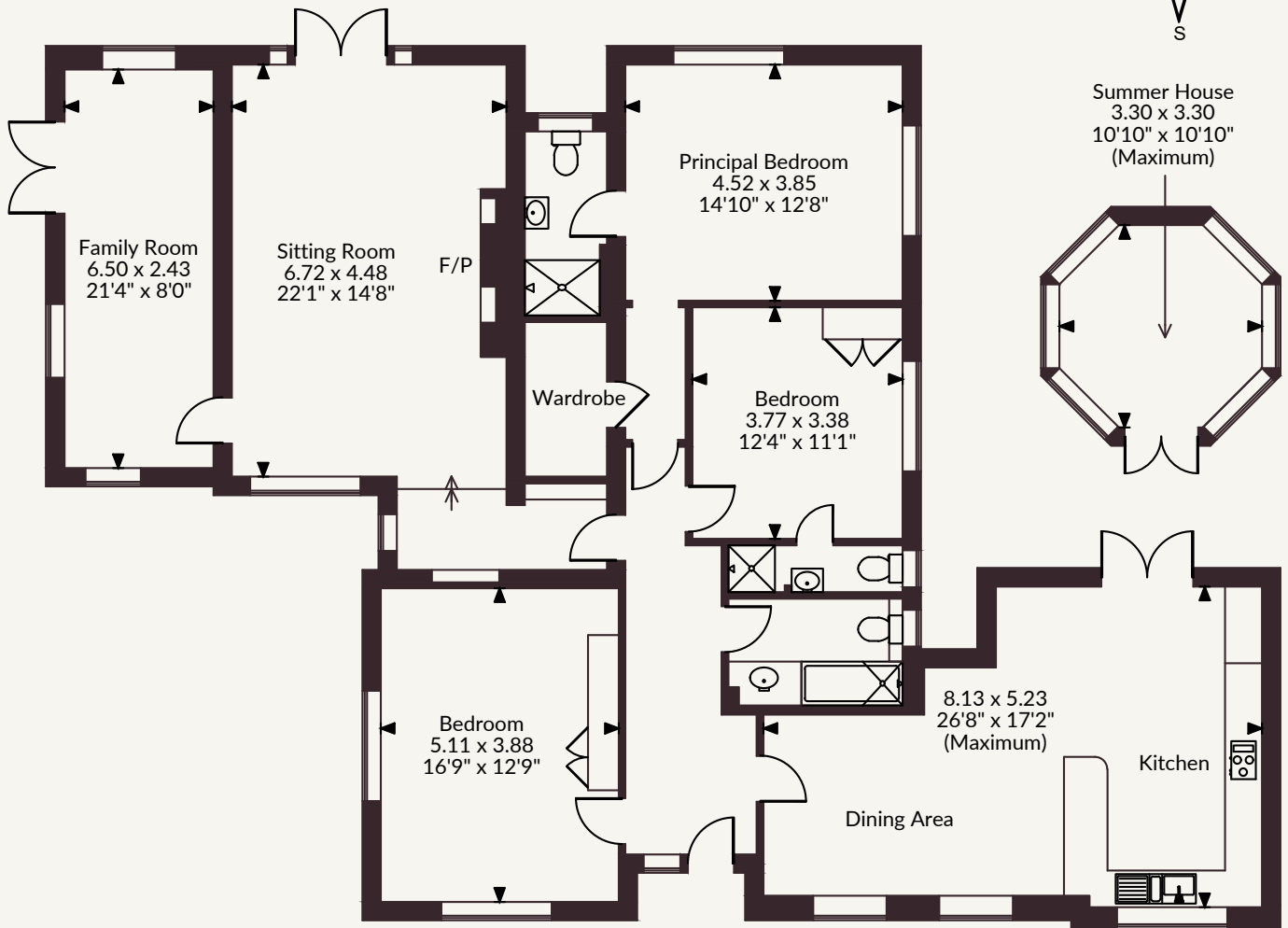
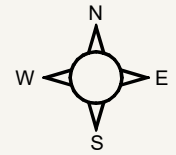
Off-street parking & gated entrance

Freehold | Village

Guide price £1,375,000



Helmsdale Littleworth Road, The Sands
 Main House internal area 1,869 sq ft (174 sq m)
 Summer House internal area 97 sq ft (9 sq m)
 Total internal area 1,966 sq ft (183 sq m)



Ground Floor

FOR ILLUSTRATIVE PURPOSES ONLY - NOT TO SCALE

The position & size of doors, windows, appliances and other features are approximate only.

© ehouse. Unauthorised reproduction prohibited. Drawing ref. dig/8695279/SS

Strutt & Parker Farnham

37 Downing Street, Farnham, Surrey GU9 7PH
 01252 821102 | farnham@struttandparker.com



@struttandparker struttandparker.com

Strutt & Parker

Land and property. Since 1885.

IMPORTANT NOTICE: Strutt & Parker gives notice that: 1. These particulars do not constitute an offer or contract or part thereof. 2. All descriptions, photographs and plans are for guidance only and should not be relied upon as statements or representations of fact. All measurements are approximate and not necessarily to scale. Any prospective purchaser must satisfy themselves of the correctness of the information within the particulars by inspection or otherwise. 3. Strutt & Parker does not have any authority to give any representations or warranties whatsoever in relation to this property (including but not limited to planning/building regulations), nor can it enter into any contract on behalf of the Vendor. 4. Strutt & Parker does not accept responsibility for any expenses incurred by prospective purchasers in inspecting properties which have been sold, let or withdrawn. 5. We are able to refer you to SPF Private Clients Limited ("SPF") for mortgage broking services, and to Alexander James Interiors ("AJI"), an interior design service. Should you decide to use the services of SPF, we will receive a referral fee from them of 25% of the aggregate of the fee paid to them by you for the arrangement of a mortgage and any fee received by them from the product provider. Should you decide to use the services of AJI, we will receive a referral fee of 10% of the net income received by AJI for the services they provide to you. 6. If there is anything of particular importance to you, please contact this office and Strutt & Parker will try to have the information checked for you. Strutt & Parker is a trading style of BNP Paribas Real Estate Advisory & Property Management UK Limited. Photographs taken June 2026. Particulars prepared June 2026.