



Roughfield House

Strictly Private & Confidential

Strictly Private & Confidential

Contemporary country house with staggering views, looking out over rolling fields and copses, providing unbeatable privacy, only 57 miles from Central London

Roughfield House, London Road, Hurst Green, East Sussex

Etchingam Station 3.6 miles (London Victoria 45 minutes), Hawkhurst 4.2 miles, Tunbridge Wells 12.8 miles, M25 J5 25 miles, Gatwick 47 miles, Central London 57 miles

Features:

Early 20th Century country house with eight bedrooms including principal suite with dressing room, five reception rooms, cellar, cinema room, integral double garage, kitchen garden, beautiful deer fenced landscaped gardens, lake, paddocks, woods and copses

About 13.27 acres (5.37 ha) in total

For sale as a whole

Further land available by separate negotiation



Situation

Roughfield House has to be seen to be believed. The property extends to about 13.27 acres (5.37 hectares) in a single ring fenced block of pasture and mature woodland. Roughfield House is approached along a winding drive that descends from the A21 before arriving at formal entrance gates to the immediate grounds and gardens of Roughfield House. The property is unseen from the outside world and sits in an enchanting position overlooking a lake and across the top of woods and grass fields to the South Downs beyond. The house is completely secluded and private creating a very unusual property.

Sporting and Recreation

Bedgebury Forest and its extensive network of riding routes is only a couple of miles away and within the forest is Bedgebury National Pinetum. Bewl Water Reservoir offers a wide range of activities including sailing, rowing, fishing and walking. The well renowned gardens of Sissinghurst, Great Dixter and Pashley Manor are all within very easy reach and the ever-expanding array of vineyards surround. The south coast and all it has to offer is just 20 miles to the south. There are a number of golf clubs nearby including Dale Hill Golf Club adjacent to Roughfield.

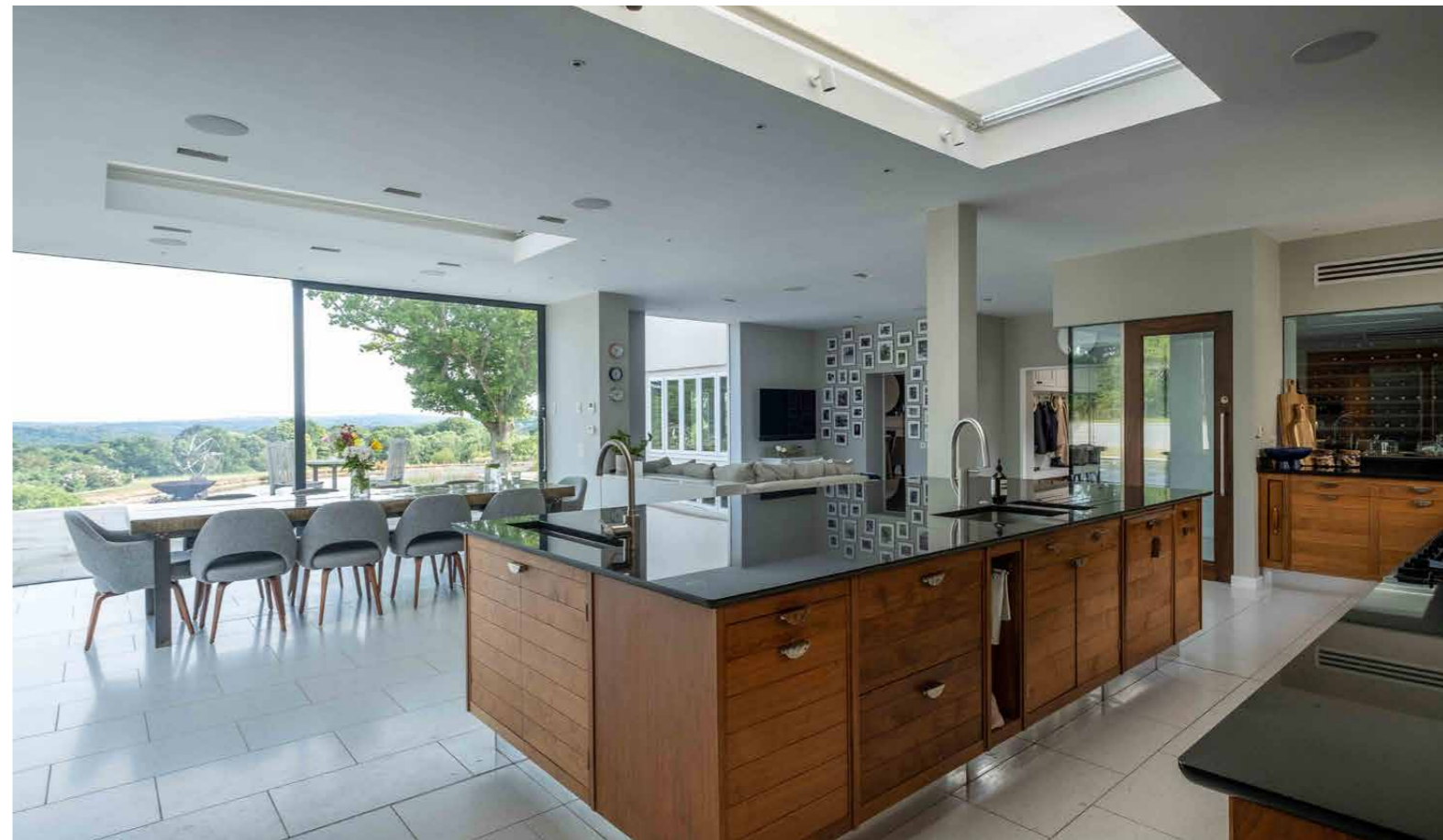
Schools

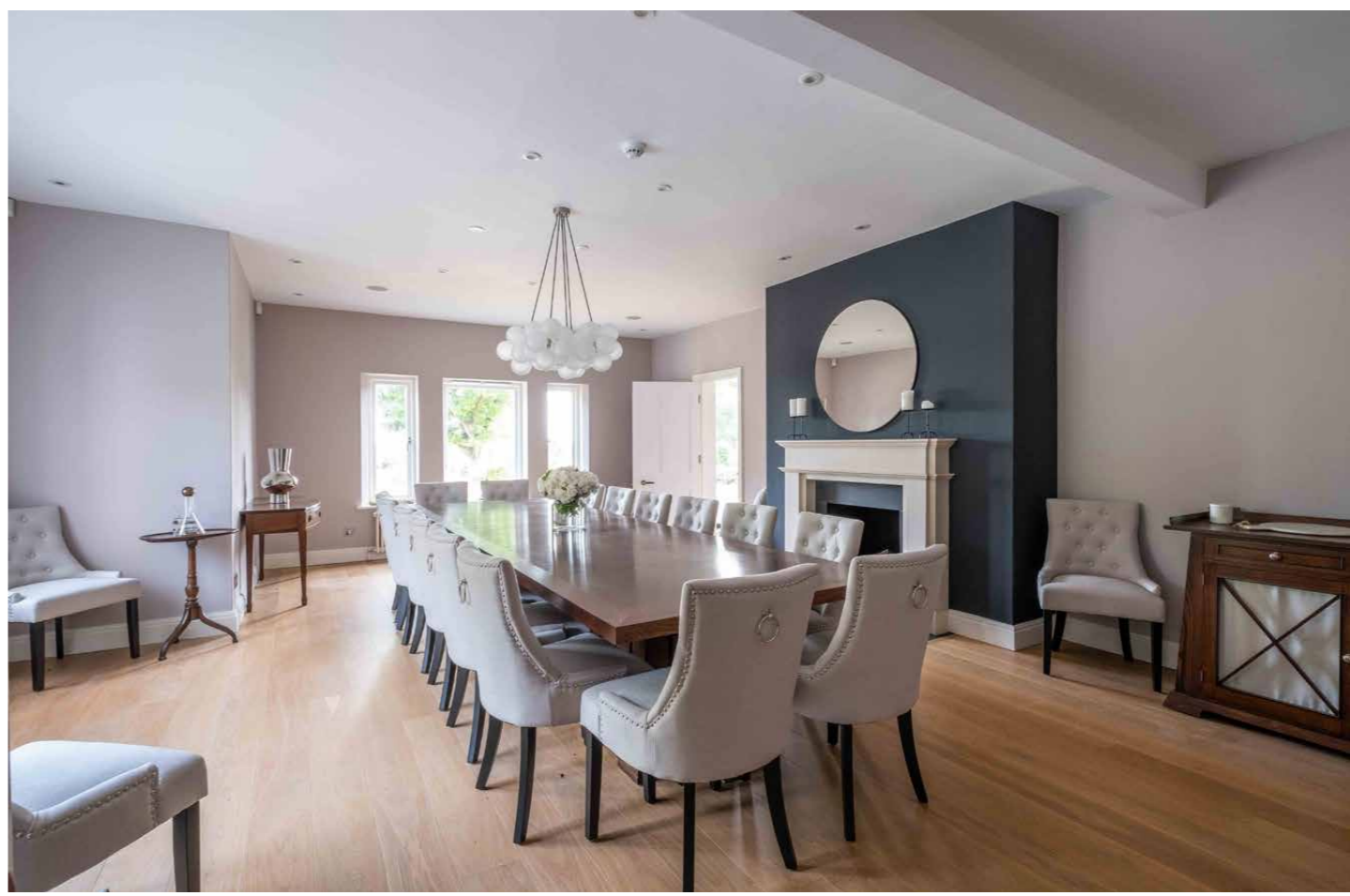
There are a number of highly regarded state and private schools in the area including Marlborough House and Saint Ronan's in Hawkhurst and also Cranbrook and Benenden very close by.

Roughfield House

Roughfield House is an exceptional contemporary property, nestled into the Sussex countryside, providing extreme comfort in an outstanding position whilst all the while being a stone's throw from central London. The eight-bedroom house constructed in the early 20th Century sits in the heart of the estate at the end of a long drive. Constructed over three floors the property comprises reception hall, drawing room, dining room, office, second office/gym, kitchen/breakfast room, utility room, wine store, cinema room and stairs down to integral double garage. On the first floor is a principal bedroom and bathroom, a secondary bedroom with bathroom and dressing room and a third bedroom. On the second floor, there are four further bedrooms, one bathroom and a shower room. The property is light and spacious with outstanding views from every window over the lake and delightful landscaped gardens. It is in exceptional condition and offers wonderful space for entertaining both inside and out.







Floorplans for Roughfield House,
London Road, Hurst Green, East Sussex, TN19 7QY

Approximate Gross Internal Area*:
8,626 sq ft / 801.4 sq m (Including garage)

Illustration for identification purposes only.
Not to scale.

*As defined by RICS – Code of Measuring Practice.





Garden and Grounds

The gardens are a major feature of Roughfield House and have been enhanced by the current owner while encompassing the existing trees, creating a mature feel in relatively young garden. They encircle the main feature of a lake with jetty set around an Oak Tree. The lake which is surrounded by herbaceous borders and stunning rose beds leads the eye out over breathtaking views over rolling fields and woods. To the west of the lake is a very productive kitchen garden and supporting buildings and beyond is a recently planted orchard. To the east lie ornamental ponds and manicured lawns surrounding a peaceful terraced area providing outdoor living and to the west is an outside kitchen and wonderful opportunity for alfresco entertaining.

The Land

The house and gardens are surrounded by two grass paddocks and woodland copses.





General

Method of sale: Roughfield House is offered for sale as a whole, by private treaty.

Tenure: The property is sold freehold with vacant possession on completion.

Services: Roughfield House has mains water, electricity and private drainage to a septic tank (complies with current regulations). The house has oil-fired central heating and fibre broadband.

Wayleaves, easements and rights of way: The property is being sold subject to and with the benefit of all rights including; rights of way, whether public or private, light, support, drainage, water and electricity supplies and other rights and obligations, easements and quasi-easements and restrictive covenants and all existing and proposed wayleaves for masts, pylons, stays, cables, drains, water and gas and other pipes whether referred to in these particulars or not.

Postcode: TN19 7QY

Solicitors: Withers Worldwide, 20 Old Bailey, London EC4M 7AN
www.withersworldwide.com

Designations: The property is set in the High Weald Natural Landscape.

Sporting, timber and mineral rights: All sporting timber and mineral rights are included in the freehold sale, in so far as they are owned.

Sporting, timber and mineral rights: All sporting timber and mineral rights are included in the freehold sale, in so far as they are owned.

Fixtures and fittings: All items usually regarded as tenant's fixtures and fittings and equipment, including fitted carpets and curtains, together with garden ornaments and statuary, are specifically excluded from the sale. These may be available to the purchaser by separate negotiation.

Local authority: East Sussex County Council
www.eastsussex.gov.uk
Rother District Council
www.rother.gov.uk

VAT: Any guide price quoted or discussed is exclusive of VAT. In the event that a sale of the property, or any part of it, or any right attached to it, becomes a chargeable supply for the purposes of VAT, such tax will be payable in addition.

Mobile coverage and broadband: Information can be found here
<https://checker.ofcom.org.uk/en-gb/mobile-coverage>

Guide price: £3,750,000

Directions
what3words: ///reflected.garages.flamenco

EPCs and Council Tax:

Property	EPC Band	Council Tax Band	2025/26 payment
Roughfield House	D	H	£5,135.50



Viewing

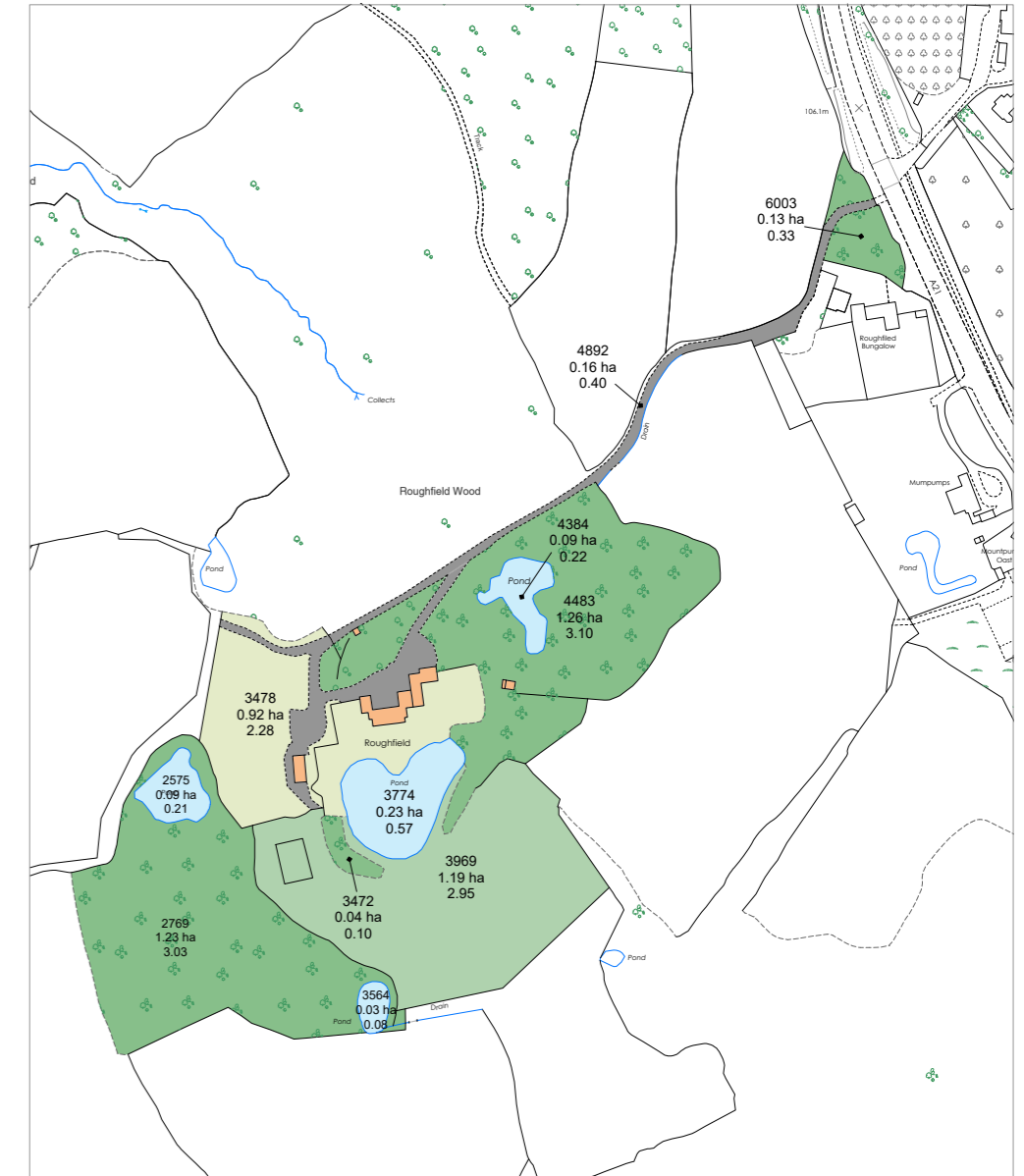
Strictly by confirmed appointment with the vendor's agents, Strutt & Parker London 020 7591 2214

Strutt & Parker London
43 Cadogan Street, London SW3 2PR

+44 (0)20 7591 2214
london@struttandparker.com
struttandparker.com

Over 50 offices across England and Scotland,
including Prime Central London

IMPORTANT NOTICE Strutt & Parker gives notice that: 1. These particulars do not constitute an offer or contract or part thereof. 2. All descriptions, photographs and plans are for guidance only and should not be relied upon as statements or representations of fact. All measurements are approximate and not necessarily to scale. Any prospective purchaser must satisfy themselves of the correctness of the information within the particulars by inspection or otherwise. 3. Strutt & Parker does not have any authority to give any representations or warranties whatsoever in relation to this property (including but not limited to planning/building regulations), nor can it enter into any contract on behalf of the Vendor. 4. Strutt & Parker does not accept responsibility for any expenses incurred by prospective purchasers in inspecting properties which have been sold, let or withdrawn. 5. We are able to refer you to SPFF Private Clients Limited ("SPFF") for mortgage broking services, and to Alexander James Interiors ("AJI"), an interior design service. Should you decide to use the services of SPFF, we will receive a referral fee from them of 25% of the aggregate of the fee paid to them by you for the arrangement of a mortgage and any fee received by them from the product provider. Should you decide to use the services of AJI, we will receive a referral fee of 10% of the net income received by AJI for the services they provide to you. 6. If there is anything of particular importance to you, please contact this office and Strutt & Parker will try to have the information checked for you. Photographs taken July 2022. Particulars prepared February 2026. Strutt & Parker is a trading style of BNP Paribas Real Estate Advisory & Property Management UK Limited.



Roughfields House

Total Area (5.37 ha / 13.27 ac)

This plan is published for the convenience of the purchaser only. Its accuracy is not guaranteed and it is expressly excluded from any contract.

Based on Ordnance Survey 1:2,500 mapping with the permission of the Controller of HMSO Crown Copyright Licence No ES 100018525

Not to Scale. Drawing No. W17115-05 | Date 25.03.26





For the finer things in property.

**STRUTT
& PARKER**

BNP PARIBAS GROUP 