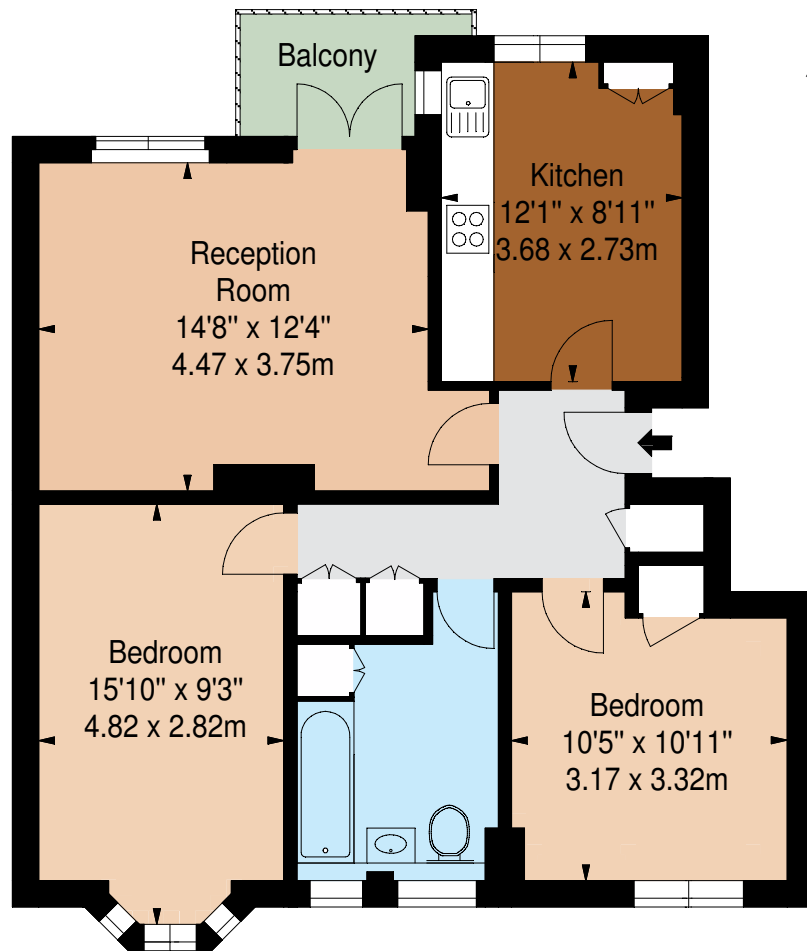


Longlands Court

Notting Hill, W2





Second Floor

IMPORTANT NOTICE: Strutt & Parker gives notice that: 1. These particulars do not constitute an offer or contract or part thereof. 2. All descriptions, photographs and plans are for guidance only and should not be relied upon as statements or representations of fact. All measurements are approximate and not necessarily to scale. Any prospective purchaser must satisfy themselves of the correctness of the information within the particulars by inspection or otherwise. 3. Strutt & Parker does not have any authority to give any representations or warranties whatsoever in relation to this property (including but not limited to planning/building regulations), nor can it enter into any contract on behalf of the Vendor. 4. Strutt & Parker does not accept responsibility for any expenses incurred by prospective purchasers in inspecting properties which have been sold, let or withdrawn. 5. We are able to refer you to SPF Private Clients Limited ("SPF") for mortgage broking services, and to Alexander James Interiors ("AJI"), an interior design service. Should you decide to use the services of SPF, we will receive a referral fee from them of 25% of the aggregate of the fee paid to them by you for the arrangement of a mortgage and any fee received by them from the product provider. Should you decide to use the services of AJI, we will receive a referral fee of 10% of the net income received by AJI for the services they provide to you. 6. If there is anything of particular importance to you, please contact this office and Strutt & Parker will try to have the information checked for you. Photographs taken April 2025. Particulars prepared April 2025. Strutt & Parker is a trading style of BNP Paribas Real Estate Advisory & Property Management UK Limited



Bright two-bedroom apartment with balcony in prime Notting Hill location.

Discover this well-proportioned 710 sq ft two-bedroom apartment, ideally positioned on the second floor (with lift access) of the sought-after Longlands Court – a well-maintained, purpose-built block in the heart of vibrant Notting Hill.

Boasting two spacious double bedrooms, the property offers a bright and airy reception room with large south-facing windows that open onto a private balcony/terrace – perfect for enjoying the sun. Additional features include a separate fully-fitted kitchen, and large family bathroom. Longlands Court enjoys a fantastic location stretching from Portobello Road to Denbigh Road along Westbourne Grove, placing you moments from world famous markets, boutique shops, restaurants, and cafés. Excellent transport links are nearby, while the green open spaces of Kensington Gardens and Hyde Park are just a short distance away.

Floorplans

Gross internal area 710 sq ft (66 sq m)
For identification purposes only.

General

Tenure: Leasehold of 86 years 8 months, expires 25/12/2111
Local Authority: Royal Borough of Kensington and Chelsea
Service Charge: £2,200 per annum
Ground Rent: £10 per annum
Council Tax: Band D
EPC Rating: D
Parking: Residential permit
Broadband: Available
Asking Price: £650,000

Notting Hill

303 Westbourne Grove, London, W11 2QA

020 7221 1111

nottinghill@struttandparker.com
struttandparker.com



@struttandparker

Over 50 offices across England and Scotland,
including Prime Central London

For the finer things in property.

**STRUTT
& PARKER**

BNP PARIBAS GROUP