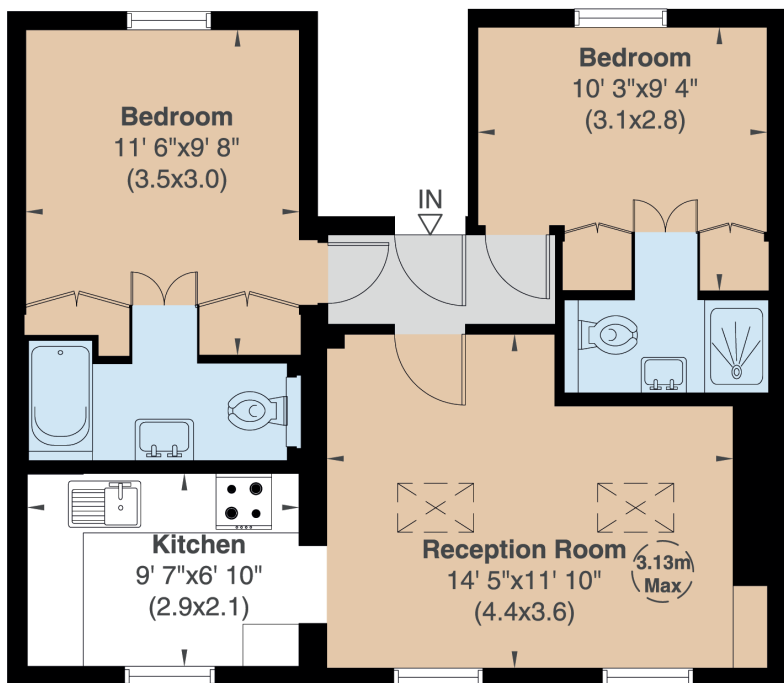


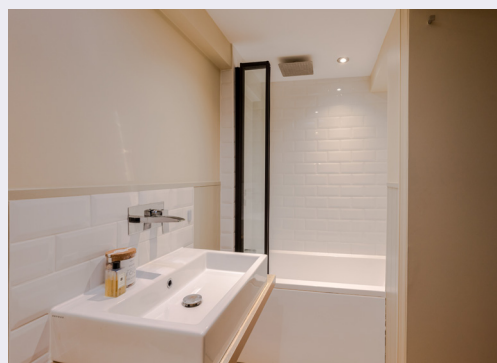
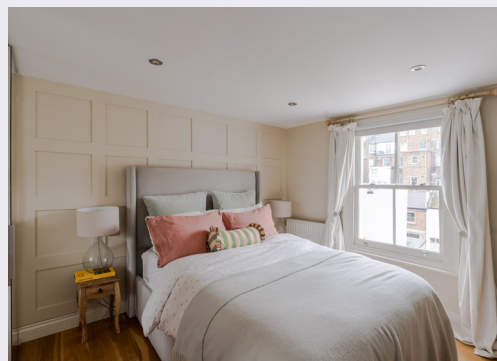
Lonsdale Road

Notting Hill, W11





Second Floor



A stylishly presented, lateral two-bedroom apartment in the heart of Notting Hill.

Situated over the top floor of an attractive period building, this charming flat has fantastic entertaining space with an abundance of natural light from three, south-facing windows. The two en-suite bedrooms are positioned at the rear of the flat, overlooking a quiet, low built mews.

Lonsdale Road is a quiet, pretty street of colourful houses, located parallel to the most fashionable stretch of Westbourne Grove and the designer shops, restaurants, cafes, bars and boutiques of the immediate area. Notting Hill Gate underground station (Central, Circle and District lines) is situated close by, along with the green spaces of Kensington Gardens.

Agents note: the vendor of this property is an associate of an employee of Strutt & Parker.

Floorplans

Gross internal area 546 sq ft (51 sq m)
For identification purposes only.

General

Tenure: Share of the freehold, underlying lease expiring 09/07/2971
Local Authority: The Royal Borough of Kensington and Chelsea
Service Charge: £1,549.18 for the period of 25.03.2026 - 24.09.26
Council Tax: Band D
EPC Rating: C
Parking: Residents'
Mobile coverage and broadband: Information can be found here: <https://checker.ofcom.org.uk/en-gb/mobile-coverage>
Asking Price: £900,000

Notting Hill

303 Westbourne Grove, London, W11 2QA

020 7221 1111

nottinghill@struttandparker.com
struttandparker.com

IMPORTANT NOTICE: Strutt & Parker gives notice that: 1. These particulars do not constitute an offer or contract or part thereof. 2. All descriptions, photographs and plans are for guidance only and should not be relied upon as statements or representations of fact. All measurements are approximate and not necessarily to scale. Any prospective purchaser must satisfy themselves of the correctness of the information within the particulars by inspection or otherwise. 3. Strutt & Parker does not have any authority to give any representations or warranties whatsoever in relation to this property (including but not limited to planning/building regulations), nor can it enter into any contract on behalf of the Vendor. 4. Strutt & Parker does not accept responsibility for any expenses incurred by prospective purchasers in inspecting properties which have been sold, let or withdrawn. 5. We are able to refer you to SPF Private Clients Limited ("SPF") for mortgage broking services, and to Alexander James Interiors ("AJI"), an interior design service. Should you decide to use the services of SPF, we will receive a referral fee from them of 25% of the aggregate of the fee paid to them by you for the arrangement of a mortgage and any fee received by them from the product provider. Should you decide to use the services of AJI, we will receive a referral fee of 10% of the net income received by AJI for the services they provide to you. 6. If there is anything of particular importance to you, please contact this office and Strutt & Parker will try to have the information checked for you. Photographs taken March 2026. Particulars prepared March 2026. Strutt & Parker is a trading style of BNP Paribas Real Estate Advisory & Property Management UK Limited



@struttandparker

Over 50 offices across England and Scotland,
including Prime Central London

For the finer things in property.

