

Lower Sloane Street,
Chelsea



Strutt
& Parker

Land and property. Since 1885.

A beautifully presented one bedroom apartment close to Sloane Square.

This stunning apartment boasts wood flooring, high ceilings and access to beautiful communal gardens.

The property is wonderfully light throughout with the bedroom to the rear overlooking the communal gardens.



Location

Lower Sloane Street is very well located for both transport and shopping and the flat itself would make the perfect London base.

Postcode region: SW1W

General

Tenure: Leasehold of 125 years from 16 November 2023

Local Authority: Kensington and Chelsea

Council Tax: Band F

EPC Rating: C

Service Charge: £3,913 per annum

Ground Rent: Peppercorn

Parking: Residents' permit

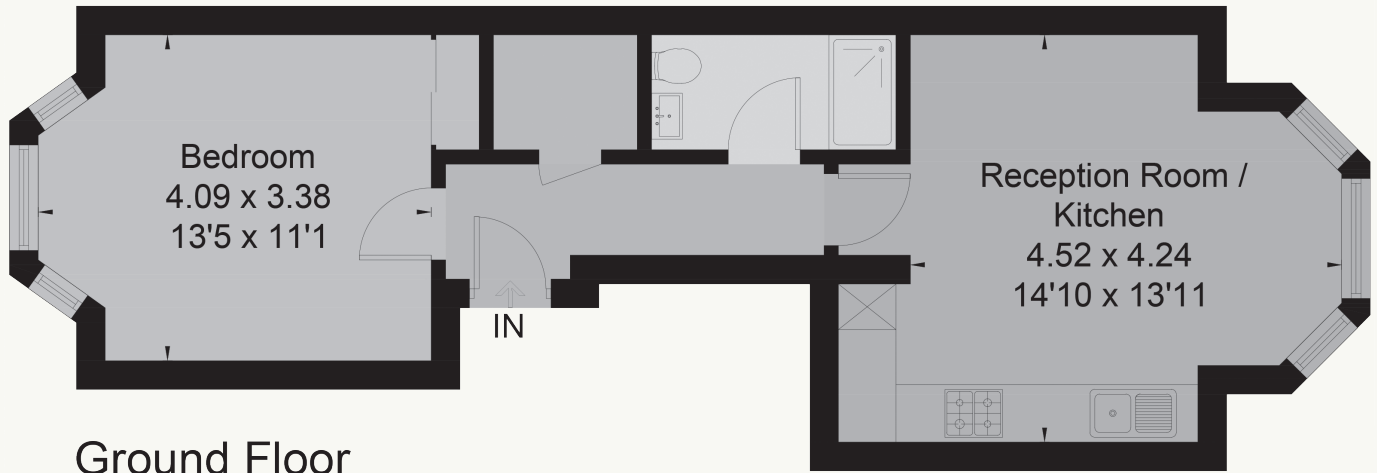
Mobile coverage and broadband: Information can be found here: <https://checker.ofcom.org.uk/en-gb/mobile-coverage>

**466 sq ft (43.2 sq m)
1 Double bedroom
1 Reception room
Communal gardens
Leasehold**

Guide price £875,000



Approximate Floor Area = 43.2 sq m / 466 sq ft



Ground Floor



This floor plan has been drawn in accordance with RICS Property Measurement 2nd edition.
All measurements, including the floor area, are approximate and for illustrative purposes only. @fourwalls-group.com #104219

Strutt & Parker Knightsbridge & Belgravia

66 Sloane Street, London SW1X 9SH

020 7235 9959 | knightsbridge@struttandparker.com



@struttandparker struttandparker.com

IMPORTANT NOTICE: Strutt & Parker gives notice that: 1. These particulars do not constitute an offer or contract or part thereof. 2. All descriptions, photographs and plans are for guidance only and should not be relied upon as statements or representations of fact. All measurements are approximate and not necessarily to scale. Any prospective purchaser must satisfy themselves of the correctness of the information within the particulars by inspection or otherwise. 3. Strutt & Parker does not have any authority to give any representations or warranties whatsoever in relation to this property (including but not limited to planning/building regulations), nor can it enter into any contract on behalf of the Vendor. 4. Strutt & Parker does not accept responsibility for any expenses incurred by prospective purchasers in inspecting properties which have been sold, let or withdrawn. 5. We are able to refer you to SPF Private Clients Limited ("SPF") for mortgage broking services, and to Alexander James Interiors ("AJI"), an interior design service. Should you decide to use the services of SPF, we will receive a referral fee from them of 25% of the aggregate of the fee paid to them by you for the arrangement of a mortgage and any fee received by them from the product provider. Should you decide to use the services of AJI, we will receive a referral fee of 10% of the net income received by AJI for the services they provide to you. 6. If there is anything of particular importance to you, please contact this office and Strutt & Parker will try to have the information checked for you. Strutt & Parker is a trading style of BNP Paribas Real Estate Advisory & Property Management UK Limited. Photographs taken xxxxx 2026. Particulars prepared April 2026.

Strutt
& Parker

Land and property. Since 1885.