



Lowndes Square, Knightsbridge SW1X

**STRUTT & PARKER**  
BNP PARIBAS GROUP



## Lowndes Square, Knightsbridge, SW1X

A large, lateral 2 bedroom apartment  
in a highly sought after Knightsbridge  
garden square address

Reception room | Two bedrooms | Two  
bathrooms | Patio | Own private entrance  
Access to private garden square | EPC Rating E

Held on a 34-year lease and now requiring  
updating, this charming Knightsbridge  
apartment offers any incoming purchaser an  
opportunity to create a truly special home.

The property, extending to over 1,400sq.ft, has  
the benefit of its own private entrance, private  
patio and also access to the wonderful private  
garden square.



### Terms

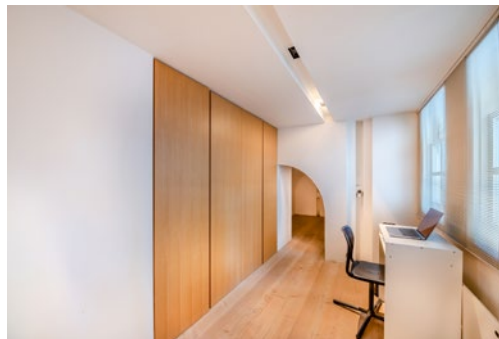
**Tenure:** Leasehold expiring 21/06/2059 thus  
circa 34 years remaining

**Service Charge:** Circa £5,800 pa

**Council Tax:** Band H

**Local Authority:** City of Westminster

**Asking Price:** £2,000,000







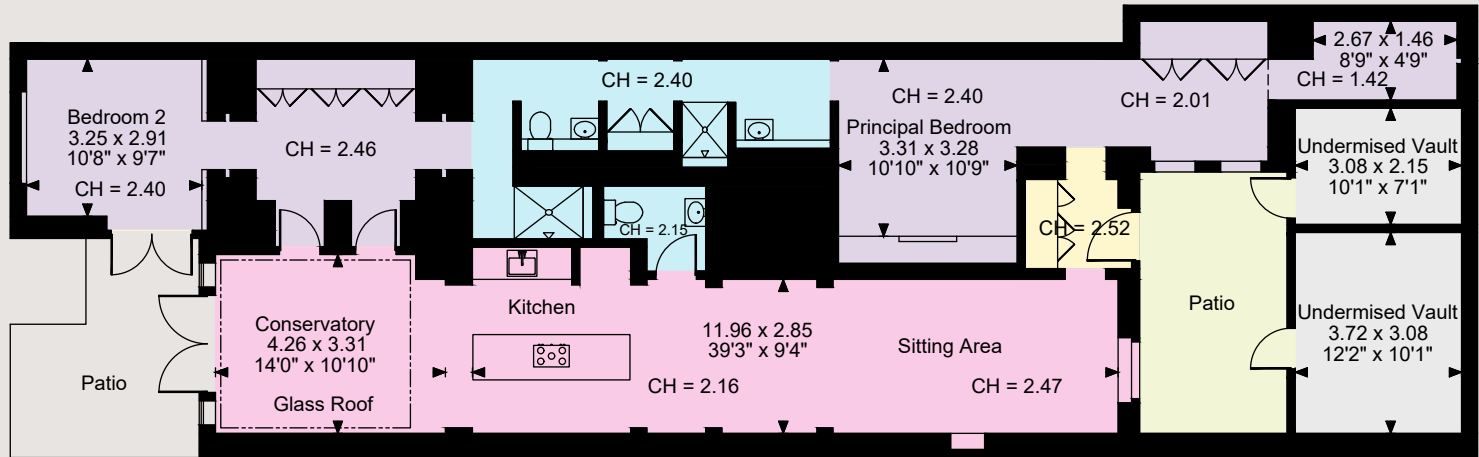
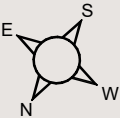
### Location

Lowndes Square is found in the very heart of Knightsbridge, located just to the east of Sloane Street, west of Belgravia and south of Hyde Park.

It is perfectly located for all of the many international amenities of the area including the world famous department stores of Harrods and Harvey Nichols.

Knightsbridge underground station (Piccadilly line) is 0.2 miles away

Floorplans  
Flat internal area 1,440 sq ft (134 sq m)  
For identification purposes only.



Lower Ground Floor

The position & size of doors, windows, appliances and other features are approximate only.  
□□□ Denotes restricted head height  
© ehouse. Unauthorised reproduction prohibited. Drawing ref. dig/8627833/KKM

### Knightsbridge & Belgravia

66 Sloane Street, London SW1X 9SH

020 7235 9959

knightsbridge@struttandparker.com

**IMPORTANT NOTICE:** Strutt & Parker gives notice that: 1. These particulars do not constitute an offer or contract or part thereof. 2. All descriptions, photographs and plans are for guidance only and should not be relied upon as statements or representations of fact. All measurements are approximate and not necessarily to scale. Any prospective purchaser must satisfy themselves of the correctness of the information within the particulars by inspection or otherwise. 3. Strutt & Parker does not have any authority to give any representations or warranties whatsoever in relation to this property (including but not limited to planning/building regulations), nor can it enter into any contract on behalf of the Vendor. 4. Strutt & Parker does not accept responsibility for any expenses incurred by prospective purchasers in inspecting properties which have been sold, let or withdrawn. 5. We are able to refer you to SPF Private Clients Limited ("SPF") for mortgage broking services, and to Alexander James Interiors ("AJI"), an interior design service. Should you decide to use the services of SPF, we will receive a referral fee from them of 25% of the aggregate of the fee paid to them by you for the arrangement of a mortgage and any fee received by them from the product provider. Should you decide to use the services of AJI, we will receive a referral fee of 10% of the net income received by AJI for the services they provide to you. 6. If there is anything of particular importance to you, please contact this office and Strutt & Parker will try to have the information checked for you. Photographs taken November 2024. Particulars prepared November 2024. Strutt & Parker is a trading style of BNP Paribas Real Estate Advisory & Property Management UK Limited.

