

Lowndes Square, Knightsbridge

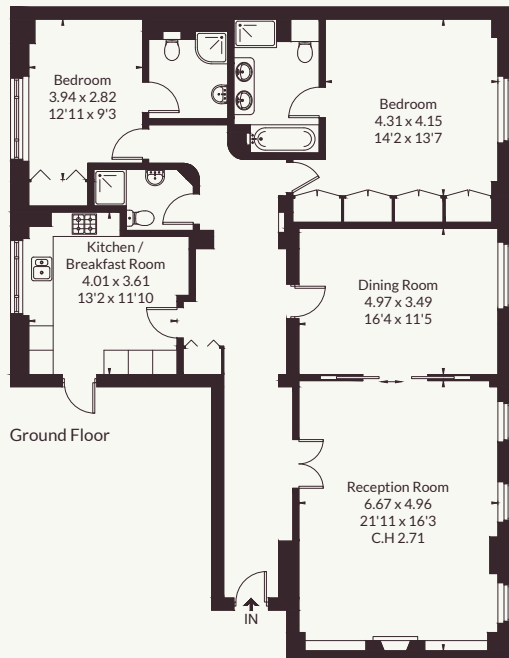


Strutt
& Parker

Land and property. Since 1885.



Approximate Floor Area = 145 sq m / 1561 sq ft



This floor plan has been drawn in accordance with RICS Property Measurement 2nd edition. All measurements, including the floor area, are approximate and for illustrative purposes only. @fourwalls-group.com #106760

A truly blank canvas requiring renovation, overlooking the gardens of Lowndes Square.

With excellent scope for redevelopment, this wonderfully bright apartment boasting garden square views offers a rare opportunity for its next owner to create an outstanding Knightsbridge home.

Set up currently in a large format two-bedroom layout, and with potential to reconfigure the space into a three-bedroom floorplan subject to the usual permissions, the property has been almost entirely stripped out, with its bathrooms and kitchen in need of full re-installation.

General


Tenure: Leasehold, 123 Years 2 months
 Local Authority: City of Westminster
 Council Tax: Band H
 EPC Rating: E
 Service Charge: £35,915 per annum
 Ground Rent: Peppercorn
 Parking: Residents' permit
 Mobile coverage and broadband:
 Information can be found here: <https://checker.ofcom.org.uk/en-gb/mobile-coverage>

Strutt & Parker Knightsbridge & Belgravia

66 Sloane Street, London SW1X 9SH

020 7235 9959 | knightsbridge@struttandparker.com



 @struttandparker struttandparker.com

IMPORTANT NOTICE: Strutt & Parker gives notice that: 1. These particulars do not constitute an offer or contract or part thereof. 2. All descriptions, photographs and plans are for guidance only and should not be relied upon as statements or representations of fact. All measurements are approximate and not necessarily to scale. Any prospective purchaser must satisfy themselves of the correctness of the information within the particulars by inspection or otherwise. 3. Strutt & Parker does not have any authority to give any representations or warranties whatsoever in relation to this property (including but not limited to planning/building regulations), nor can it enter into any contract on behalf of the Vendor. 4. Strutt & Parker does not accept responsibility for any expenses incurred by prospective purchasers in inspecting properties which have been sold, let or withdrawn. 5. We are able to refer you to SPF Private Clients Limited ("SPF") for mortgage broking services, and to Alexander James Interiors ("AJI"), an interior design service. Should you decide to use the services of SPF, we will receive a referral fee from them of 25% of the aggregate of the fee paid to them by you for the arrangement of a mortgage and any fee received by them from the product provider. Should you decide to use the services of AJI, we will receive a referral fee of 10% of the net income received by AJI for the services they provide to you. 6. If there is anything of particular importance to you, please contact this office and Strutt & Parker will try to have the information checked for you. Strutt & Parker is a trading style of BNP Paribas Real Estate Advisory & Property Management UK Limited. Photographs taken April 2026. Particulars prepared April 2026.

1,561 sq ft (145 sq m)
Two bedrooms
Three bathrooms
Unmodernised
Communal gardens

Guide price £2,750,000

Strutt & Parker