



Trowmers

Luxted Road, Downe, Kent

STRUTT  
& PARKER

BNP PARIBAS GROUP



## A handsome period house with beautifully appointed accommodation and splendid gardens in a lovely setting.

A fine detached period house with extensive accommodation and beautiful gardens plus an enclosed paddock set in the idyllic and sought-after village of Downe. The house boasts elegant original details combined with stylish décor, located in a convenient position within easy reach of Bromley.



**6 RECEPTION ROOMS**



**7 BEDROOMS**



**3 BATHROOMS**



**GATED DRIVE AND GARAGE**



**GARDENS AND Paddock**



**FREEHOLD**



**VILLAGE SETTING**



**6971 SQ FT**



**GUIDE PRICE 2,500,000**



### The property

Dating back to 1717, this imposing locally listed country house is set within approximately three acres and enjoys an enviable position within the picturesque village of Downe. Trowmors was once owned by Sarah Wedgwood, a member of the renowned Wedgwood chinaware family and sister of Emma Wedgwood, Charles Darwin's wife.

The ground floor has six elegant and comfortable reception rooms, including the stunning, spacious sitting room, which provides a grand entrance. The room measures more than 33ft and features wooden flooring, panelled walls and beautiful wood panelled fireplaces at either end. Off the sitting room there is a private study, while to the rear, double doors open to the sunny conservatory with its views across the garden. There is also a drawing room with an ornate fireplace and French doors opening onto the rear garden, as well as a dining room adjoining the kitchen in an open-plan layout. The kitchen itself features

shaker-style fitted units to base and wall level, a central island with a breakfast bar and integrated appliances, while the utility room and cellar offer further storage and space for home appliances.

Two staircases lead to the first floor, where there are seven well-presented double bedrooms. These include the generous principal bedroom with its bay window, dressing room with extensive built-in wardrobes and en suite bathroom with a bath and a separate shower unit. The second bedroom has Jack and Jill access to the principal bedroom's en suite bathroom, while one further bedroom has an en suite shower room. There is also a family bathroom with a bath and a separate shower. The main staircase continues to the attic, where there is substantial storage, with the potential for conversion, subject to the necessary consents. Further accommodation to the rear of the house includes a separate office/studio and a home gym, both of which are accessed via the garden.













## Outside

At the front of the property, an in/out driveway with wrought-iron gates at either entrance provides access, parking and turning space, as well as leading to the detached garage.

The delightful gardens to the rear of the house enjoy a southeast-facing aspect and include formal lawns with an array of mature trees and extends to more than 250ft. There are paved seating areas for al fresco dining and entertaining and attractive borders well stocked with a variety of ground covering plants, flowering plants, and shrubbery. To the side is a substantial timber-framed greenhouse beyond which is a stable block and associated storage.

To the rear of the garden a gate gives access to a further enclosed paddock, ideal grazing for horses or livestock.

## Location

The property is in a peaceful setting in the sought-after village of Downe. The village is set in a highly convenient position within the M25 and close to Orpington and Bromley, yet with the beautiful rolling Kent countryside on its doorstep.

Downe has several everyday amenities, including a village hall, a local pub and a primary school. The town of Biggin Hill provides various further everyday amenities, including supermarkets and the closest state secondary school.

Bromley town centre, just six miles away, provides excellent shopping and leisure facilities, with large supermarkets and extensive high street shops at The Glades shopping mall. Orpington's mainline station is around four miles away, providing excellent commuter links to London Bridge, Charing Cross and Cannon Street, while by road, the M25 is just six miles away.

## Distances

- Biggin Hill 2.3 miles
- Orpington 3.9 miles
- Bromley 5.5 miles
- Oxted 8.7 miles
- Sevenoaks 9.0 miles

## Nearby Stations

- Orpington

## Key Locations

- Down House
- Chartwell
- Hever Castle
- Tower of London
- Chiddingstone Castle
- Eden Valley Museum
- Knole House (Sevenoaks)

## Nearby Schools

- Browns School
- Baston House School
- TLC The Learning Centre
- Woodview
- Clannad Education Centre
- Farringtons School
- Bickley Park School
- Breaside Preparatory School
- Bromley High School (GDST)
- Babington House School
- Eltham College
- Sevenoaks

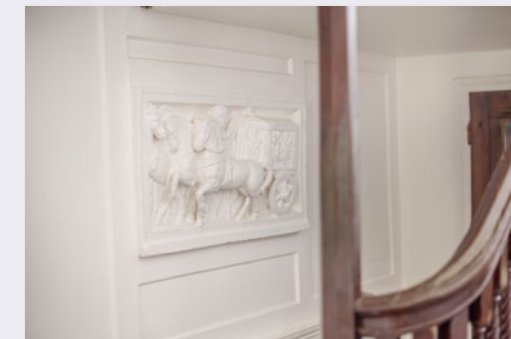
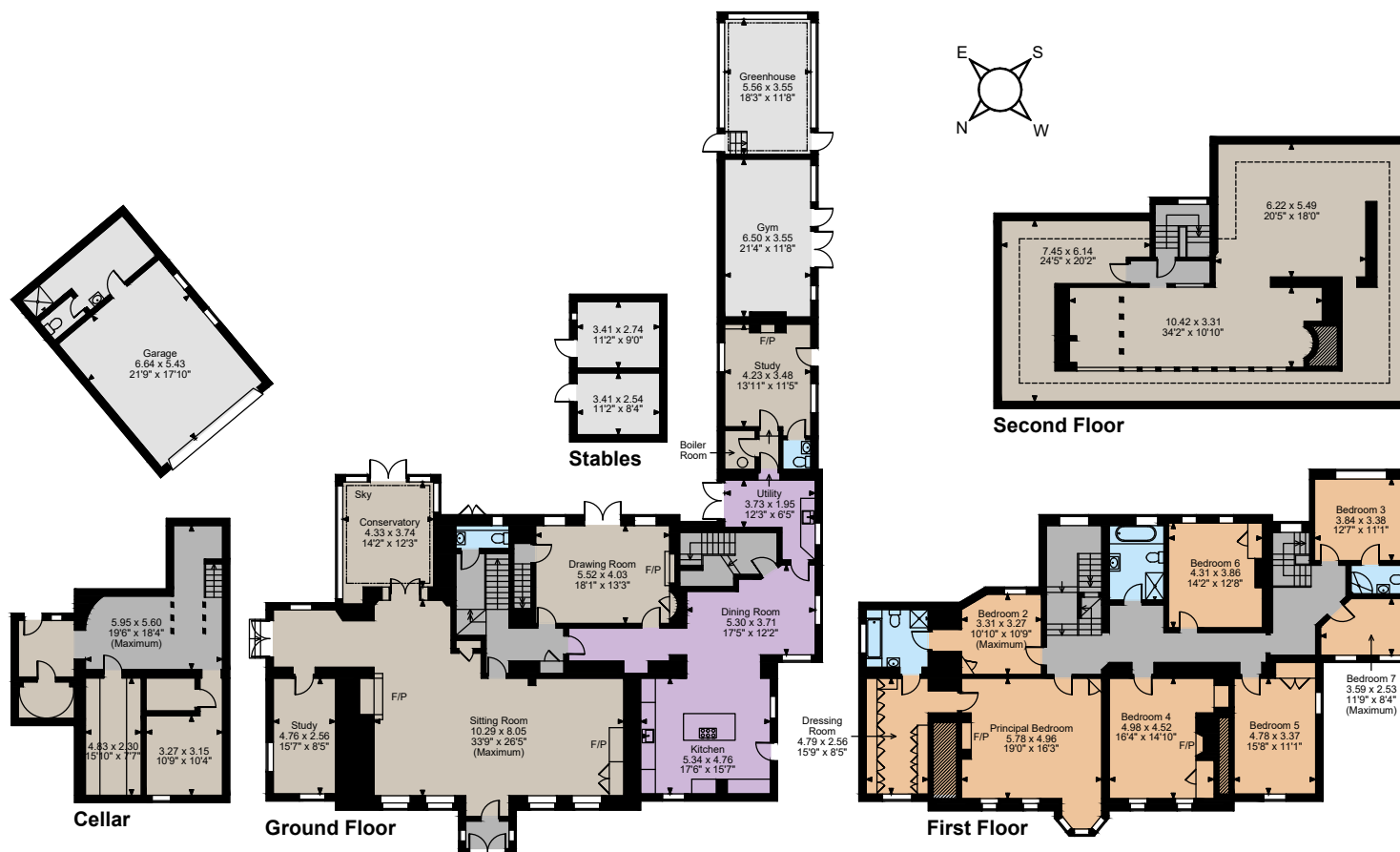












## Floorplans

Main House internal area 6,971 sq ft (648 sq m)

Garage internal area 525 sq ft (49 sq m)

Outbuildings internal area 669 sq ft (62 sq m)

Total internal area 8,165 sq ft (759 sq m)

For identification purposes only.

## Directions

BR6 7JS

**what3words:** ///loops.alarm.tall - brings you to the driveway

## General

**Local Authority:** Bromley Council 0300 303 8672

**Services:** All mains services are understood to be connected to the property.

**Mobile and Broadband checker:** Information can be found here <https://checker.ofcom.org.uk/en-gb/>

**Council Tax Band:** H

**EPC Rating:** E

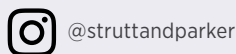
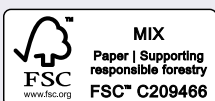
## Sevenoaks

15 Bank Street, Sevenoaks, Kent TN13 1UW

**01732 459900**

sevenoaks@struttandparker.com  
struttandparker.com

**IMPORTANT NOTICE:** Strutt & Parker gives notice that: 1. These particulars do not constitute an offer or contract or part thereof. 2. All descriptions, photographs and plans are for guidance only and should not be relied upon as statements or representations of fact. All measurements are approximate and not necessarily to scale. Any prospective purchaser must satisfy themselves of the correctness of the information within the particulars by inspection or otherwise. 3. Strutt & Parker does not have any authority to give any representations or warranties whatsoever in relation to this property (including but not limited to planning/building regulations), nor can it enter into any contract on behalf of the Vendor. 4. Strutt & Parker does not accept responsibility for any expenses incurred by prospective purchasers in inspecting properties which have been sold, let or withdrawn. 5. We are able to refer you to SPF Private Clients Limited ("SPF") for mortgage broking services, and to Alexander James Interiors ("AJI"), an interior design service. Should you decide to use the services of SPF, we will receive a referral fee from them of 25% of the aggregate of the fee paid to them by you for the arrangement of a mortgage and any fee received by them from the product provider. Should you decide to use the services of AJI, we will receive a referral fee of 10% of the net income received by AJI for the services they provide to you. 6. If there is anything of particular importance to you, please contact this office and Strutt & Parker will try to have the information checked for you. Photographs taken August 2025. Particulars prepared August 2025. Strutt & Parker is a trading style of BNP Paribas Real Estate Advisory & Property Management UK Limited



Over 50 offices across England and Scotland,  
including Prime Central London

For the finer things in property.

