



Manson Place, SW7

**STRUTT & PARKER**  
BNP PARIBAS GROUP

# Manson Place, SW7

A fantastic ground and first floor four bedroom maisonette with its own independent entrance and outside terrace

Four bedrooms | Two reception rooms | Three bathrooms | Patio | Balcony | Parking | EPC C Council tax H

The property benefits from three large double bedrooms all with built in storage, a fourth single bedroom again with storage. The reception room is spacious and the kitchen is modern and bright with access onto a patio garden.

The property boasts fantastic ceiling height, good natural light and plenty of built in storage throughout.

## Location

Manson Place is ideally located with access to all the restaurants, bars and shops. South Kensington and Gloucester Road tube stations are within striking distance, with the Circle, District and Piccadilly Lines. Manson Place is a stone's throw away from all of the area's best Prep schools.







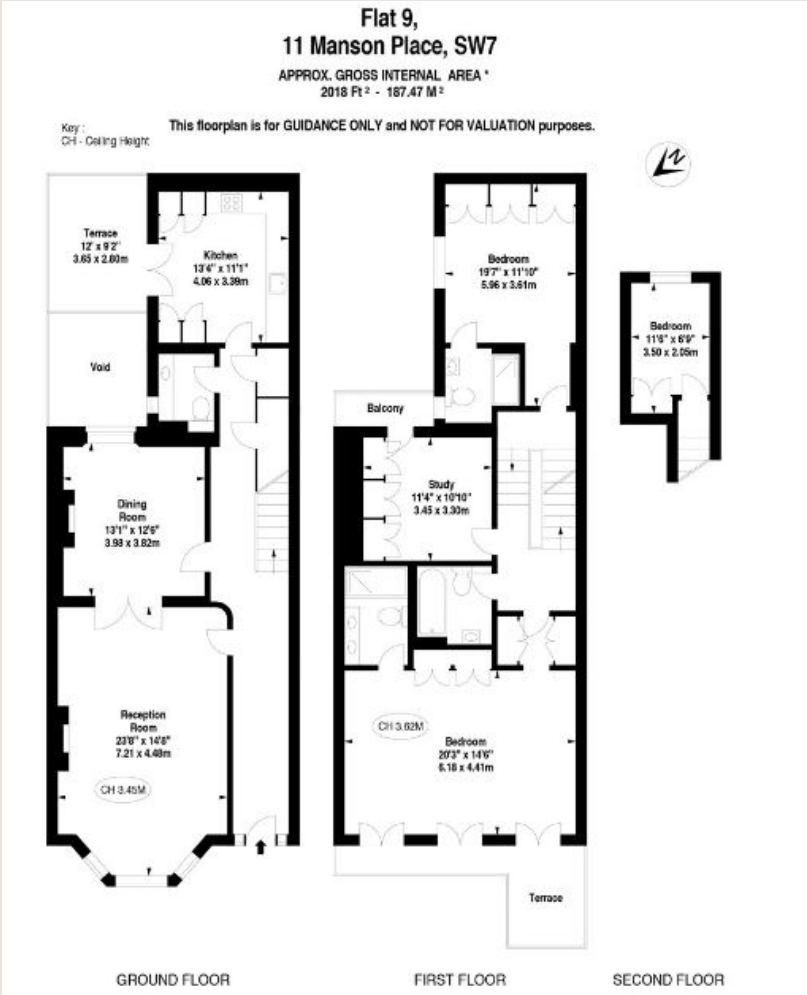
### Terms

**Tenure:** Lease expires March 2113 (90 years remaining approx)  
**Local Authority:** The Royal Borough of Kensington and Chelsea  
**Service Charge:** £6095 per annum  
**Ground Rent:** £700 per annum  
**Guide Price:** £3,500,000

### South Kensington

90 Old Brompton Road, London, SW7 3LQ  
**020 7581 7000**

southken@struttandparker.com



**IMPORTANT NOTICE:** Strutt & Parker gives notice that: 1. These particulars do not constitute an offer or contract or part thereof. 2. All descriptions, photographs and plans are for guidance only and should not be relied upon as statements or representations of fact. All measurements are approximate and not necessarily to scale. Any prospective purchaser must satisfy themselves of the correctness of the information within the particulars by inspection or otherwise. 3. Strutt & Parker does not have any authority to give any representations or warranties whatsoever in relation to this property (including but not limited to planning/building regulations), nor can it enter into any contract on behalf of the Vendor. 4. Strutt & Parker does not accept responsibility for any expenses incurred by prospective purchasers in inspecting properties which have been sold, let or withdrawn. 5. We are able to refer you to SPF Private Clients Limited ("SPF") for mortgage broking services, and to Alexander James Interiors ("AJI"), an interior design service. Should you decide to use the services of SPF, we will receive a referral fee from them of 25% of the aggregate of the fee paid to them by you for the arrangement of a mortgage and any fee received by them from the product provider. Should you decide to use the services of AJI, we will receive a referral fee of 10% of the net income received by AJI for the services they provide to you. 6. If there is anything of particular importance to you, please contact this office and Strutt & Parker will try to have the information checked for you. Photographs taken December 2023. Particulars prepared December 2023. Strutt & Parker is a trading style of BNP Paribas Real Estate Advisory & Property Management UK Limited.