

RIGNALLS

Great Missenden, Buckinghamshire







An outstanding Arts and Crafts home with exceptional Chiltern views.

Accommodation:

Reception hall | Drawing room | Dining hall | Conservatory / Garden room
Kitchen with breakfast room opening to the terrace | 2 sitting rooms | Utility room | Guest WC | Gym
Principal bedroom suite with Study | 5 further bedrooms | 3 further bathrooms
Upstairs sitting room | Cellar and store room

Outbuildings:

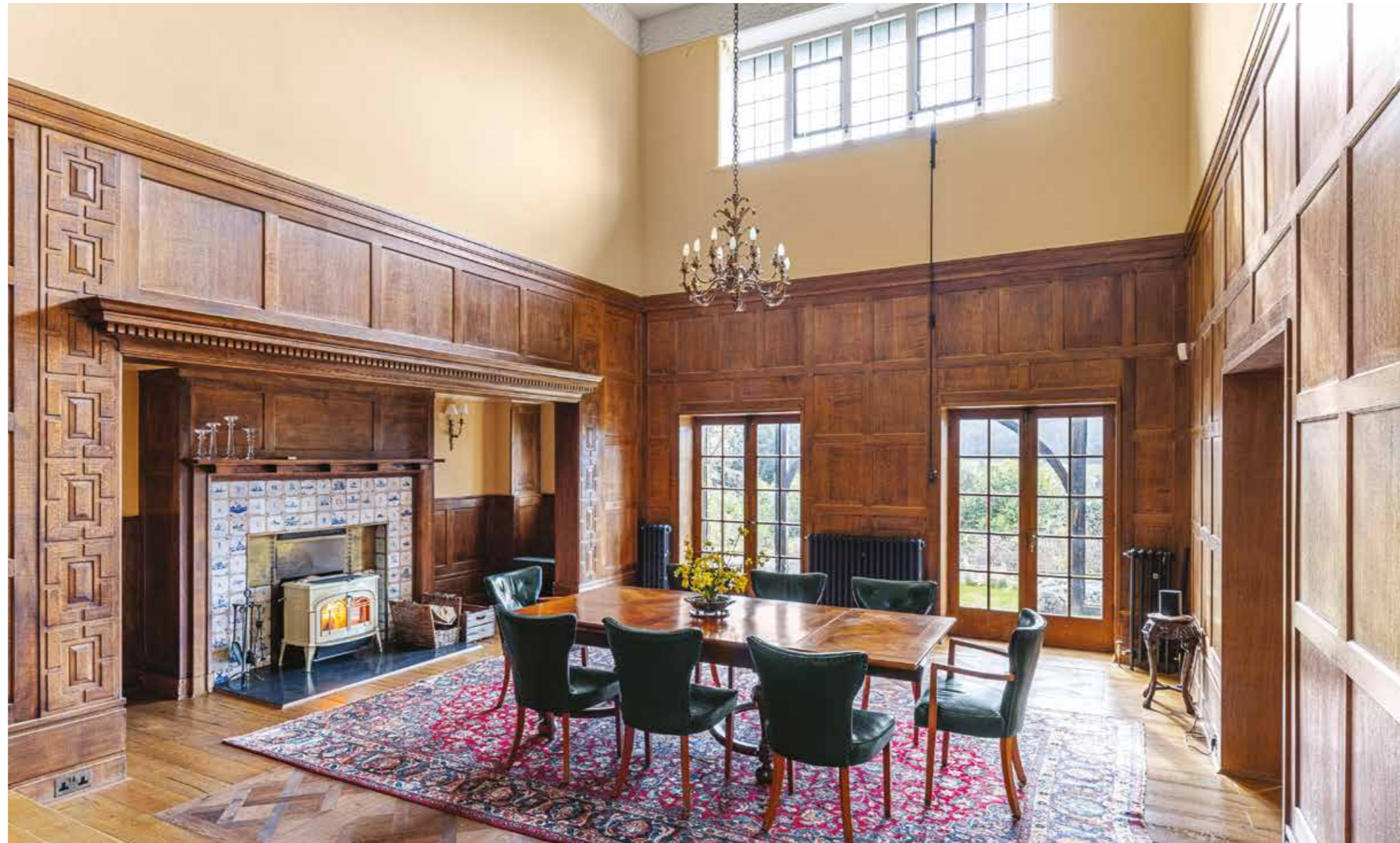
Garages, Greenhouses & Stables

Landscaped gardens:

Orchard, Paddock & Mature woodland

In all about 10.3 acres













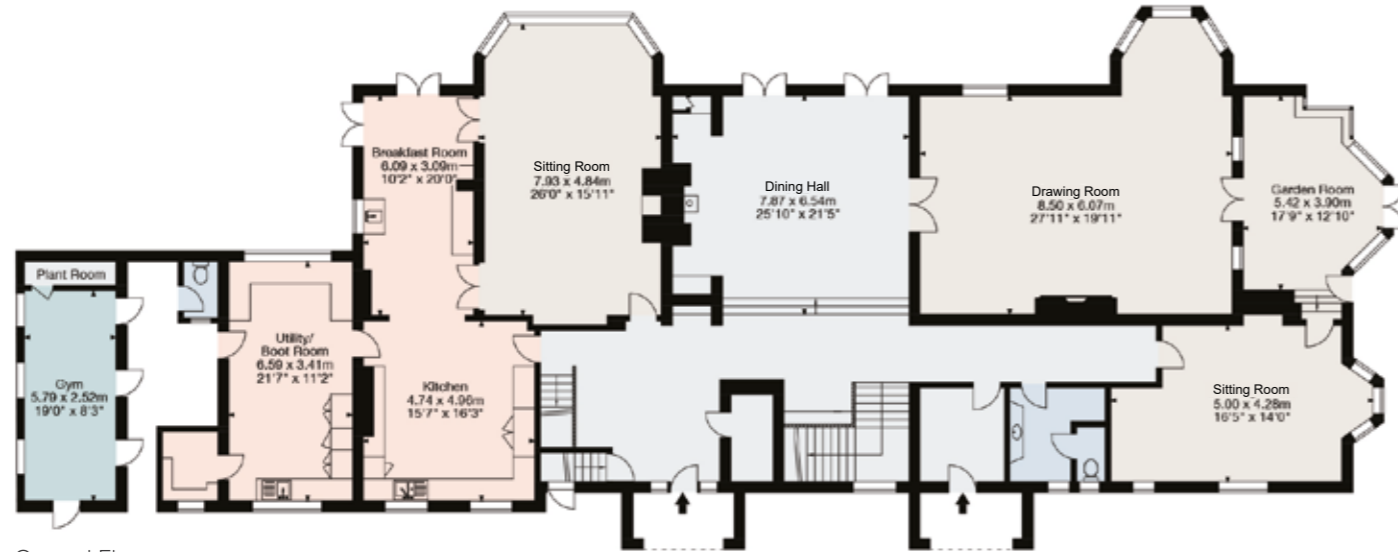




Rignalls

Total Area = 885 sq m / 9525 sq ft
 Approximate Gross Internal Area:
 Main House (including Gym) = 800 sq m / 8611 sq ft
 Garage / Carport = 34 sq m / 365 sq ft
 Stables = 26 sq m / 280 sq ft
 Greenhouse = 25 sq m / 269 sq ft
 External Log Store = 5 sq m / 53 sq ft

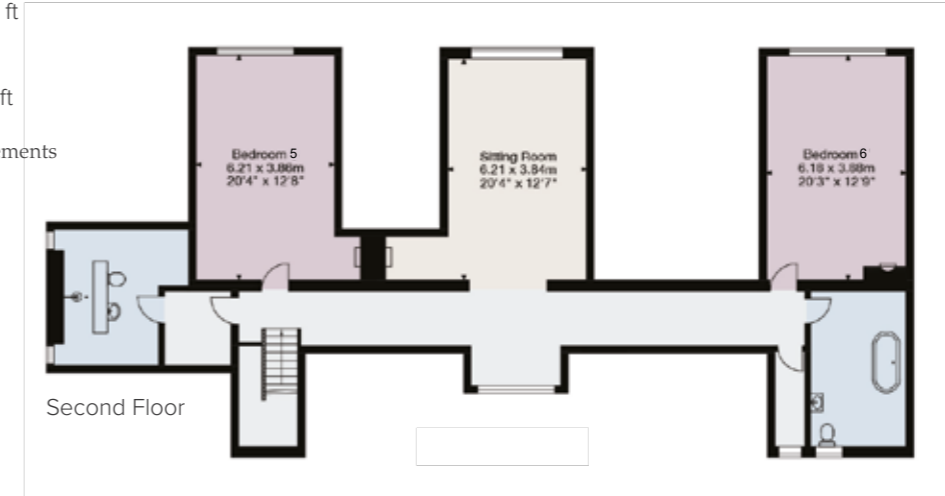
This plan is for layout guidance only, measurements are approximate, not to scale.



Ground Floor



First Floor



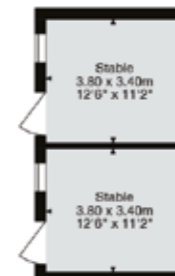
Second Floor



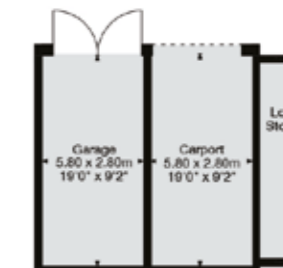
Cellar



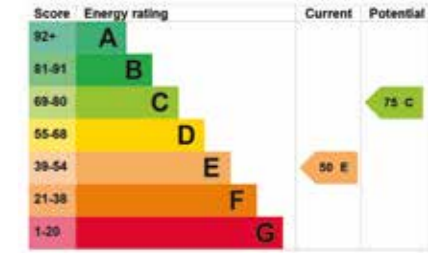
Greenhouse



Stables



Garage / Carport





Gardens and Grounds

Rignalls is situated in an elevated position with a mature wooded backdrop overlooking the popular Hampden Valley. The property is surrounded by well-maintained agricultural land and the traditional Beech woodland of the Chiltern Hills.

Location

Local facilities are available in nearby Great Missenden, just over one mile away, whilst more comprehensive amenities are available in Amersham about 8 miles away. Nearby High Wycombe has a more extensive shopping and services.

Distances

Great Missenden – 1.1 miles (Marylebone from 36 minutes)
Chesham – 6 miles (Metropolitan line)
Central London 36.5 miles
Amersham – 8 miles
M40 (J4) – 9 miles
Heathrow Airport – 25 miles
London Oxford Airport – 21 miles
Northolt RAF/Private use airfield – 21 miles

Local independent schools

Wycombe Abbey (8.8 miles)
Caldicott (15 miles)
The Beacon (6 miles)
Godstowe (7.2 miles)
High March (11 miles)
Davenies (10 miles)
Harrow School (25 miles)
Eton College (30 miles)
Wellington College (38 miles)
(All distances and times are approximate).



London – 36.5 miles



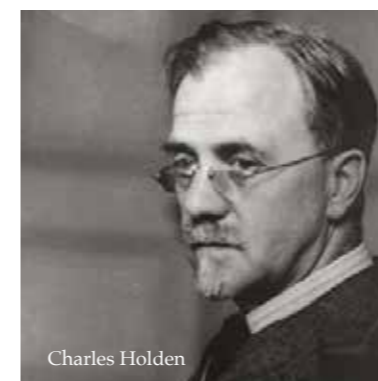
Excellent local pubs and restaurants



Guards Polo Club – 29 miles



Harrow – 25 miles



Charles Holden



Gertrude Jekyll

Historical Note

Rignalls was designed by the well-known Arts and Crafts architect, Charles Holden, in 1909 for Sir Felix Semon. Sir Felix a prominent doctor and attended to Edward VII and Winston Churchill. Gertrude Jekyll was employed to design the gardens and grounds, much of which are still in existence today. During the Second World War the house was owned by a member of the free French government. Amongst many, Charles de Gaulle is reputed to have visited on numerous occasions.



HANOVER PRIVATE

Alex Newall

M: 07884 262774

E: an@hanover-private.com

T: 020 3405 5324

Strutt
& Parker

Eleanor Coles

E: elle.coles@struttandparker.com

T: 01753 891188

Mark Rimell

M: 07702 317 238

E: mark.rimell@struttandparker.com

T: 07702 317 238

IMPORTANT NOTICE

1. Particulars: These particulars are not an offer or contract, nor part of one. You should not rely on statements by Hanover Private LLP in the particulars or by word of mouth or in writing ("information") as being factually accurate about the property, its condition or its value. Neither Hanover Private LLP nor any joint agent has any authority to make any representations about the property, and accordingly any information given is entirely without responsibility on the part of the agents, seller(s) or lessor(s).
2. Photos etc: The photographs show only certain parts of the property as they appeared at the time they were taken. Areas, measurements and distances given are approximate only.
3. Regulations etc: Any reference to alterations to, or use of, any part of the property does not mean that any necessary planning, building regulations or other consent has been obtained. A buyer or lessee must find out by inspection or in other ways that these matters have been properly dealt with and that all information is correct.
4. VAT: The VAT position relating to the property may change without notice. Hanover Private LLP is registered in England with registered number 12087073. Our registered office is 9 Bonhill Street, London, EC2A 4DJ, where you may look at a list of directors names.
5. Hanover Private LLP is a member of the Property Ombudsman scheme.

Photographs dated 2024 and 2026 © Hanover Private LLP

