

Marsham Street,
Westminster



Strutt
& Parker

Land and property. Since 1885.

Spacious two-bedroom apartment in the heart of Westminster.

Located on the second floor of this prestigious modern building in central Westminster, a two-bedroom 1,297 sq ft apartment. Benefitting from a large triple aspect reception room, two double bedrooms (both en suite).

The apartment also comprises of a study, separate W/C and separate kitchen.

Furthermore it benefits from a secure valet parking space. The building operates a 24-hour concierge service and has fantastic leisure facilities including gym, sauna and treatment room.



Location

The location is one of Westminster's finest, moments from the River Thames and within easy reach of Pimlico, Westminster and St James's Park stations. The neighbourhood offers an excellent selection of cafés, restaurants and boutiques, along with major cultural landmarks, including Tate Britain and the Palace of Westminster. Local supermarkets and well-regarded schools are also close by, adding to the convenience of this prime Central London setting.

Postcode region: SW1P

General

Tenure: Leasehold with 971 years remaining
Local Authority: City of Westminster
Council Tax: Band H
EPC Rating: C
Service Charge: £17,388 pa
Ground Rent: £500 pa
Parking: Valet parking
Mobile coverage and broadband: Information can be found here: <https://checker.ofcom.org.uk/en-gb/mobile-coverage>

1,297 sq ft (120.5 sq m)

Lift

Concierge

Gym

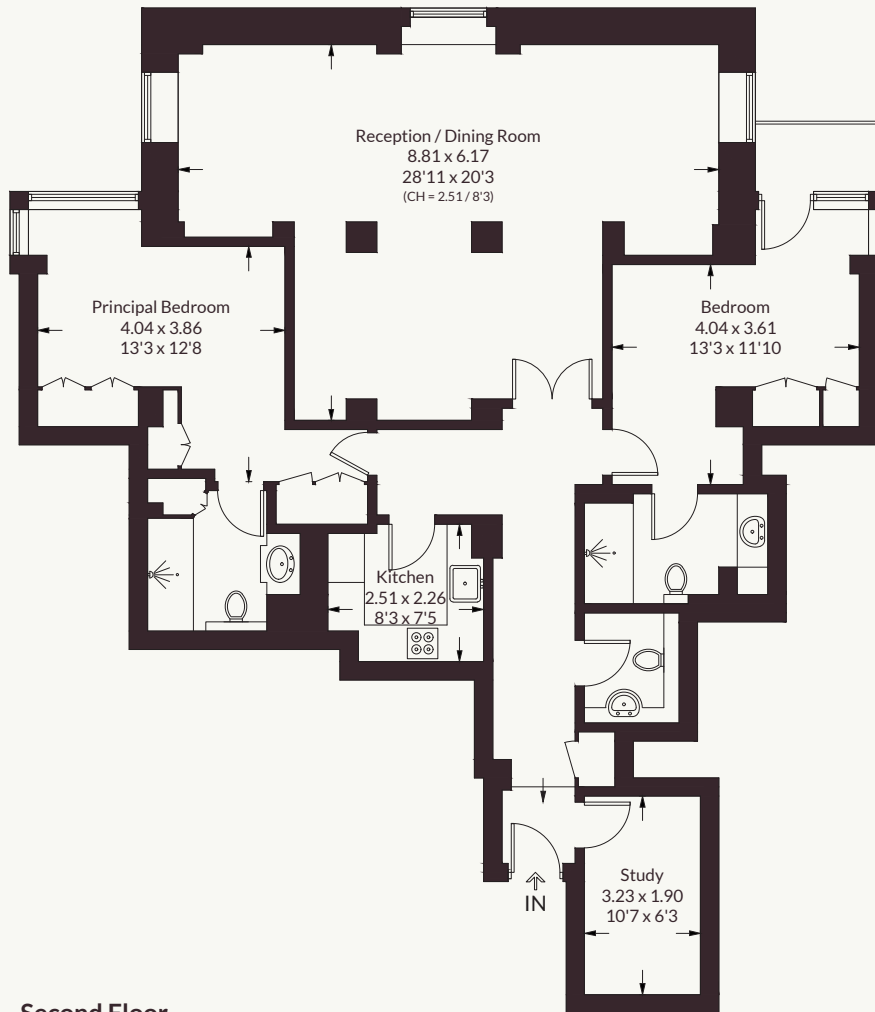
Upper floor

Leasehold

Guide price £1,450,000



Approximate Gross Internal Area = 120.5 sq m / 1297 sq ft



Second Floor

This plan is for layout guidance only. Not drawn to scale unless stated. Windows and door openings are approximate. Whilst every care is taken in the preparation of this plan, please check all dimensions, shapes and compass bearings before making any decisions reliant upon them.

Produced for Strutt & Parker

Strutt & Parker Knightsbridge & Belgravia

66 Sloane Street, London SW1X 9SH

020 7235 9959 | knightsbridge@struttandparker.com



@struttandparker

struttandparker.com

**Strutt
& Parker**

Land and property. Since 1885.

IMPORTANT NOTICE: Strutt & Parker gives notice that: 1. These particulars do not constitute an offer or contract or part thereof. 2. All descriptions, photographs and plans are for guidance only and should not be relied upon as statements or representations of fact. All measurements are approximate and not necessarily to scale. Any prospective purchaser must satisfy themselves of the correctness of the information within the particulars by inspection or otherwise. 3. Strutt & Parker does not have any authority to give any representations or warranties whatsoever in relation to this property (including but not limited to planning/building regulations), nor can it enter into any contract on behalf of the Vendor. 4. Strutt & Parker does not accept responsibility for any expenses incurred by prospective purchasers in inspecting properties which have been sold, let or withdrawn. 5. We are able to refer you to SPF Private Clients Limited ("SPF") for mortgage broking services, and to Alexander James Interiors ("AJI"), an interior design service. Should you decide to use the services of SPF, we will receive a referral fee from them of 25% of the aggregate of the fee paid to them by you for the arrangement of a mortgage and any fee received by them from the product provider. Should you decide to use the services of AJI, we will receive a referral fee of 10% of the net income received by AJI for the services they provide to you. 6. If there is anything of particular importance to you, please contact this office and Strutt & Parker will try to have the information checked for you. Strutt & Parker is a trading style of BNP Paribas Real Estate Advisory & Property Management UK Limited. Photographs taken May 2026. Particulars prepared May 2026.