

Maunsel House

Bridgwater, Somerset



A stunning, substantial Grade II* Listed country house with outbuildings and extensive grounds, in a peaceful rural Somerset position

Maunsel House, Maunsel Road, Bridgwater, TA7 0BU

North Peterton 2.2 miles, M5 (Jct 24) 3.7 miles, Bridgwater town centre 5.1 miles, Bridgwater mainline station 5.7 miles, Taunton 7.5 miles

Features:

Drawing room | Sitting area | Family room | Bar | Dining room | Kitchen/breakfast room | Utility | Store | Cloakrooms
13 Bedrooms, 6 en suite | 5 Further bathrooms
Shower room

3 Bedroom Dairy Meade Cottage
Two Bedroom Owl Barn Cottage

Gardens, grounds & outbuildings

About 11.35 acres in all





The property

Maunsel House is a magnificent Grade II* Listed country house, set in a peaceful position between Bridgwater and Taunton, and set in 11.35 acres of stunning gardens. The house is thought to date from the late 14th century with later additions over the subsequent centuries, and is the ancestral home of the Slade family. Ideal as a unique events venue, and with the potential to be used as a stunning country hotel, the property has recently been fully restored to its former glory and provides 13 bedrooms and a wealth of elegant accommodation with various splendid original details.

The ground floor has two impressive main reception rooms in the ballroom and the dining room, with the Regency styling and ornate decorative styling. There is also a characterful bar, which is in the oldest part of the building and features exposed timber beams, flagstone flooring and a handsome open fireplace. Additionally, the library is another reception room brimming with period character, with its high ceiling with exposed beams, and its imposing fireplace with elegant carved stone detailing.

Upstairs, there are 13 splendid bedrooms, each showcasing attractive period features, along with several distinctive bathrooms. The property also includes two detached cottages: Dairy Meade, which offers a kitchen, three bedrooms, a shower room and a cloakroom, and Owl Barn, which provides a kitchen and two generously sized en suite bedrooms.

Outside

The house and cottages are set within stunning 11.35 acres of gardens and grounds. The neighbouring rolling parkland, forming part of the wider estate, which includes farmland, lakes, woodland, orchards and Somerset wetlands, as well as further splendid outbuildings including a historic barn and a Saxon chapel.

The gardens surrounding the house provide extensive lawns, walled ornamental gardens, patio areas for al fresco dining and a kitchen garden. There is also a wealth of parking space on the gravel driveway and cobbled courtyards in front of the house, and by the outbuildings

Location

The property lies in a rural position just outside the small village of North Newton, and between Taunton and Bridgwater. North Newton offers several everyday amenities, including a local pub, a primary school and a parish church, while the larger village of North Pterton offers a selection of shops, cafés and restaurants, as well as a doctor's surgery and a community centre. The town of Bridgwater is five miles to the north, with its mainline station and excellent choice of shops, supermarkets and amenities, while Taunton seven miles to the south, provides further amenities, plus a direct rail service to London Paddington. The beautiful North Somerset coast is within 15 miles, while the nearby Quantock Hills provides a wealth of excellent walking, cycling and riding routes.









Directions

What3Words///moguls.interlude.unusually brings you to the property.

General Information

Local Authority

Somerset Council

Services

To be confirmed

Council Tax/Business Rates

To be confirmed

EPC

Maunsel House: E

Dairy Mead Lodge: G

Barn Owl Cottage: F

Tenure

Freehold

Wayleaves and easements

The property is sold subject to any wayleaves or easements, whether mentioned in these particulars or not.

Guide Price

£3,500,000





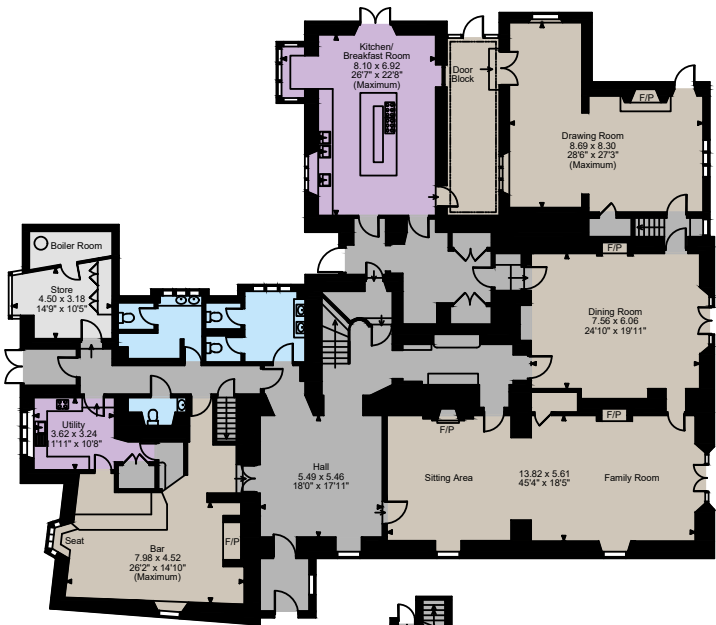
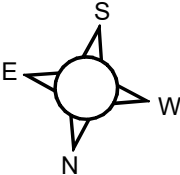
Floorplans

Main House internal area 12,717 sq ft (1,182 sq m)

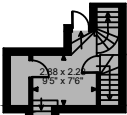
Owl Barn internal area 841 sq ft (78 sq m)

Dairy Meade internal area 802 sq ft (75 sq m)

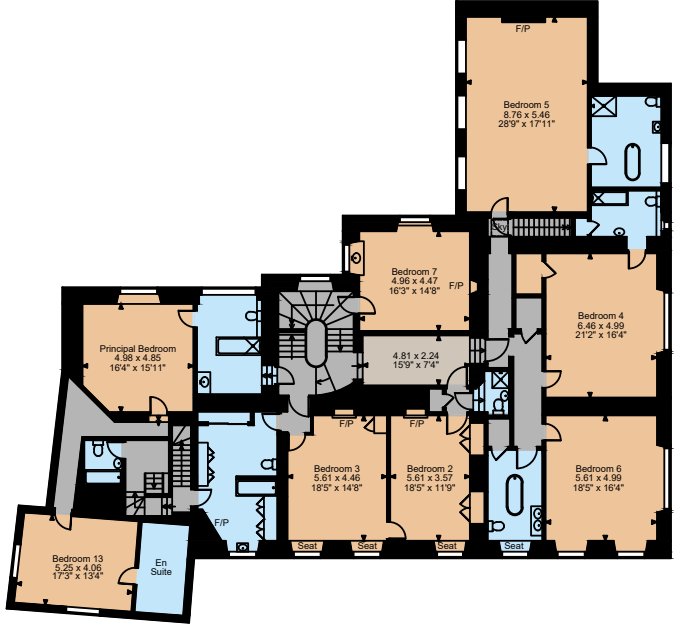
Total internal area 14,360 sq ft (1,334 sq m)



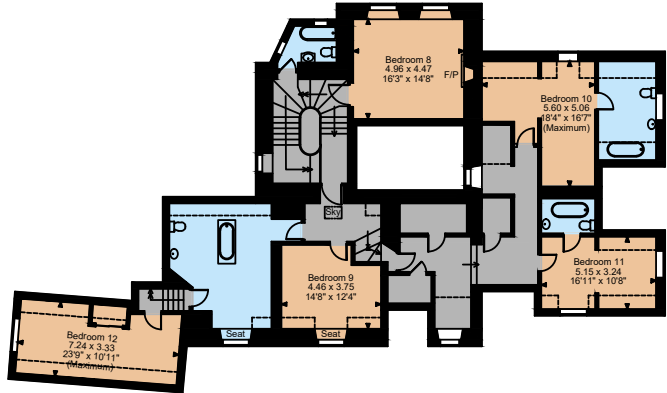
Ground Floor



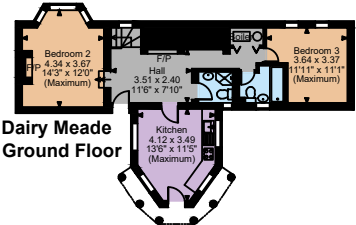
Midlanding Floor



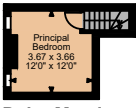
First Floor



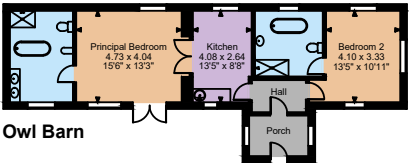
Second Floor



Dairy Meade Ground Floor



Dairy Meade First Floor



Owl Barn

The position & size of doors, windows, appliances and other features are approximate only.

Denotes restricted head height

© ehous. Unauthorised reproduction prohibited. Drawing ref. dig/8660152/DBN

Strutt & Parker London
43 Cadogan St, London SW3 2PR

+44 (0) 20 7591 2213
london@struttandparker.com
struttandparker.com

Strutt & Parker Exeter
24 Southernhay West, Exeter, Devon EX1 1PR

+44 (0) 1392 215631
exeter@struttandparker.com
struttandparker.com

Over 50 offices across England
and Scotland, including Prime
Central London

IMPORTANT NOTICE: Strutt & Parker gives notice that: 1. These particulars do not constitute an offer or contract or part thereof. 2. All descriptions, photographs and plans are for guidance only and should not be relied upon as statements or representations of fact. All measurements are approximate and not necessarily to scale. Any prospective purchaser must satisfy themselves of the correctness of the information within the particulars by inspection or otherwise. 3. Strutt & Parker does not have any authority to give any representations or warranties whatsoever in relation to this property (including but not limited to planning/building regulations), nor can it enter into any contract on behalf of the Vendor. 4. Strutt & Parker does not accept responsibility for any expenses incurred by prospective purchasers in inspecting properties which have been sold, let or withdrawn. 5. We are able to refer you to SPF Private Clients Limited ("SPF") for mortgage broking services, and to Alexander James Interiors ("AJI"), an interior design service. Should you decide to use the services of SPF, we will receive a referral fee from them of 25% of the aggregate of the fee paid to them by you for the arrangement of a mortgage and any fee received by them from the product provider. Should you decide to use the services of AJI, we will receive a referral fee of 10% of the net income received by AJI for the services they provide to you. 6. If there is anything of particular importance to you, please contact this office and Strutt & Parker will try to have the information checked for you. Photographs taken July 2025. Particulars prepared August 2025. Strutt & Parker is a trading style of BNP Paribas Real Estate Advisory & Property Management UK Limited





STRUTT & PARKER