

Mayfield Close,
Harpenden



Strutt
& Parker

Land and property. Since 1885.

A well-presented four-bedroom family home in a sought-after Harpenden location with a southwest-facing garden and within easy reach to schools.

Tucked away on a popular cul de sac close to excellent schooling and attractive countryside, this detached home ticks all the boxes for family life. Offering light-filled accommodation, well-presented interiors, plenty of space inside and out, the house has many desirable features and lends itself particularly well to large families. The versatile layout includes three reception spaces on the ground floor: a relaxed study/snug, a sitting room with a working fireplace, and an open-plan kitchen, dining room and family room which serves as the heart of the home. Spanning the entire back of the house, the room opens onto both the rear garden via a set of bifold doors and the attached garage, which is currently set up as a gym. The doors to the garden open up the space to the rear terrace, creating a lovely indoor-outdoor feature that is ideal for alfresco entertaining, while the well-appointed kitchen has ample cabinetry and a central island and breakfast bar to provide additional preparation space and storage. Also on the ground floor is a useful utility room/WC with space for laundry machines. Upstairs, the first-floor bedrooms include two good-size doubles – one en suite two smaller doubles and an extra room that would serve as a study or walk-in wardrobe. The family bathroom has a bath and separate shower.

Set back from the no-through road behind a mature hedge, the house is accessed by a block-paved driveway with off-street parking for several cars. The attached garage provides plenty of space for storage.



To the rear, the southwest-facing garden is perfectly angled to capture the sun all day, with a paved terrace adjoining the house having space for garden furniture, a barbecue area and a hot tub (available by separate negotiation). Wooden panel fencing encloses the lawn, with mature trees, hedges and well-stocked flowerbeds along one side, providing natural shade and privacy while adding splashes of colour.

Location

Wood End is situated to the north of Harpenden, with its own amenities including a pub, vet practice and local supermarket. It is especially popular with families due to its proximity to the desirable Wood End and Roundwood Park schools. Harpenden has a thriving High Street and comprehensive range of shopping facilities, including Waitrose, M&S Food and Sainsbury's, as well as several independent shops. It also boasts an excellent selection of restaurants, coffee shops and bakeries. The town is home to several outstanding state schools and some popular independent schools, with further options found in nearby St Albans and other local towns. Sport and leisure are well provided for, with a sports centre and indoor swimming pool; three golf courses; rugby, tennis and bowling clubs; and a centrally located arts and entertainment venue. Cycling, riding, walking and running can also be enjoyed in the Woodland Trust's Heartwood Forest and Rothamsted Estate.

Postcode region: AL5

General

Local Authority: St Albans City and District Council
 Services: Mains gas, electric, drainage, and water.
 Council Tax: Band G
 EPC Rating: D
 Mobile and Broadband checker: Information can be found here <https://checker.ofcom.org.uk/en-gb/>

1,982 sq ft (184.1 sq m)

Four bedrooms

Three reception rooms

Study

Southwest-facing garden

Garage/gym

Freehold | Town

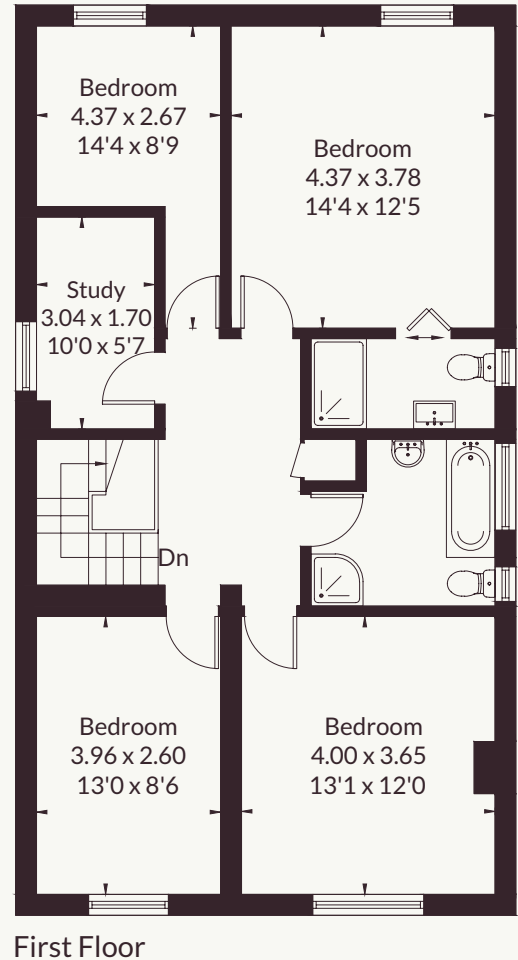
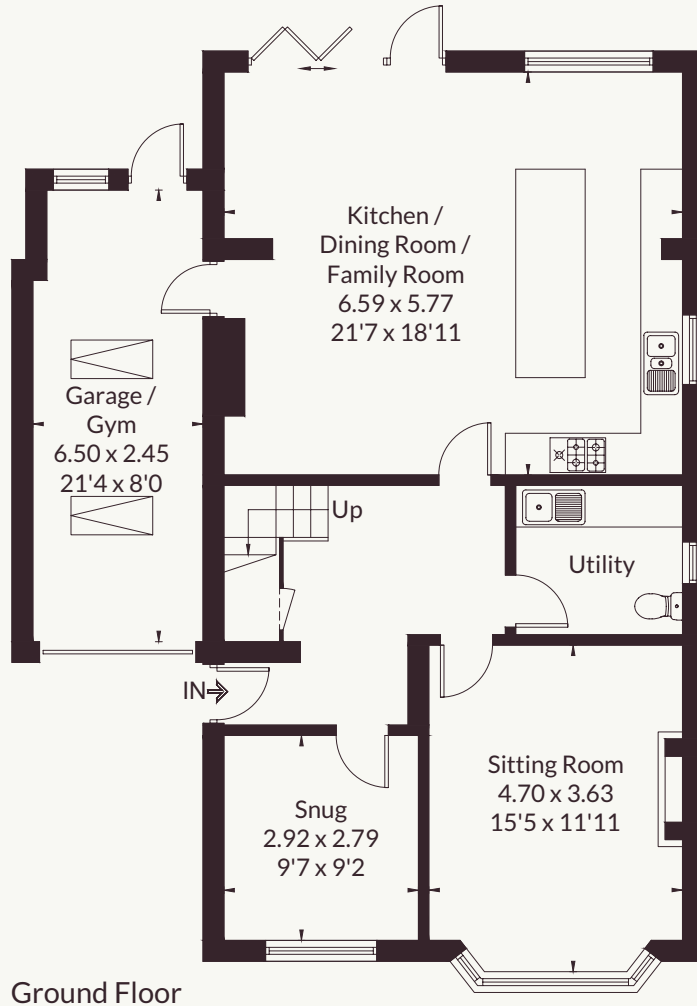
Guide price £1,350,000



Approximate Floor Area = 184.1 sq m / 1982 sq ft
(Including Garage)



[---] = Reduced head height below 1.5m



This floor plan has been drawn in accordance with RICS Property Measurement 2nd edition.

All measurements, including the floor area, are approximate and for illustrative purposes only. @fourwalls-group.com #111209

Strutt & Parker Harpenden

49 High Street, Harpenden, AL5 2SJ

01582 764343 | harpenden@struttandparker.com



@struttandparker struttandparker.com

IMPORTANT NOTICE: Strutt & Parker gives notice that: 1. These particulars do not constitute an offer or contract or part thereof. 2. All descriptions, photographs and plans are for guidance only and should not be relied upon as statements or representations of fact. All measurements are approximate and not necessarily to scale. Any prospective purchaser must satisfy themselves of the correctness of the information within the particulars by inspection or otherwise. 3. Strutt & Parker does not have any authority to give any representations or warranties whatsoever in relation to this property (including but not limited to planning/building regulations), nor can it enter into any contract on behalf of the Vendor. 4. Strutt & Parker does not accept responsibility for any expenses incurred by prospective purchasers in inspecting properties which have been sold, let or withdrawn. 5. We are able to refer you to SPF Private Clients Limited ("SPF") for mortgage broking services, and to Alexander James Interiors ("AJI"), an interior design service. Should you decide to use the services of SPF, we will receive a referral fee from them of 25% of the aggregate of the fee paid to them by you for the arrangement of a mortgage and any fee received by them from the product provider. Should you decide to use the services of AJI, we will receive a referral fee of 10% of the net income received by AJI for the services they provide to you. 6. If there is anything of particular importance to you, please contact this office and Strutt & Parker will try to have the information checked for you. Strutt & Parker is a trading style of BNP Paribas Real Estate Advisory & Property Management UK Limited. Template by Fourwalls. Photographs taken June 2026. Particulars prepared July 2026.

Strutt & Parker

Land and property. Since 1885.