



Woodside

Ponteland

Magnificent country property surrounded by stunning gardens and grounds of circa 7 acres including open lawns, fabulous terrace, a copse of trees, an orchard, duck pond and summerhouse/cocktail bar with patio

Woodside, Milbourne, Ponteland, NE20 0DG

Ponteland Village Centre 1.5 miles, Newcastle International Airport 3.6 miles,
Newcastle City Centre 10.4 miles, Morpeth 12.2 miles, Corbridge 14.8 miles, Hexham 21.4 miles

Features:

Fabulous detached family home, refurbished to an extremely high spec

Separate detached bungalow, ideal for multi generational living

11,000 sq ft of beautifully presented accommodation in total

Magnificent garden site of circa 7 acres

About 7 acres in all





The property

Woodside provides a fabulous, detached, family home occupying a magnificent garden site extending to around 7 acres with a separate three bedroom detached bungalow in the grounds, ideal for multi-generational living. This magnificent country property offers over 11,000 sq ft of beautifully presented accommodation in total and is accessed through a large timber gate, set back from the road, leading to a sweeping driveway with lighting and open courtyard, as well as a detached triple garage currently used as a large gym but could equally be utilised as a home office, dance studio or games room with bar; a separate driveway branches off to the bungalow. The gardens which surround Woodside are stunning and offer versatile outdoor entertaining spaces and places to relax.

Main House

The principal house, which has been recently refurbished throughout to an extremely high specification, offers 6700 sq ft of luxurious accommodation over three floors, reconfigured to allow for good flexible family living, and briefly comprises:

Ground Floor: Entrance hallway with grand staircase | Cloakroom | WC | Spacious sitting room | Family room | Fully equipped cinema room with state of the art projector, sound system and seating | Large garden room with excellent natural light and views over the gardens | Superbly equipped kitchen/dining room with a range of high quality mahogany cabinets and appliances, an island, granite worktops and a breakfast bar | Fully fitted laundry room

First Floor: Principal bedroom suite with dressing room and en suite bathroom | Two further double bedroom suites with en suite facilities and one with a dressing room | Study

Second Floor: Two further bedrooms, both with en suites and one with a dressing room and balcony

Externally, the outstanding gardens and grounds surrounding Woodside are the property's most impressive feature and include open lawns, a fabulous terrace area, a well planted copse of trees, an orchard and a large duck pond. There is a summer house/cocktail bar with its own patio terrace adjacent to a timber decking area, a gym/garage and a workshop.

The Bungalow

Hallway | Open plan kitchen, dining and living area with granite worktops, integrated appliances, large island and patio doors to the garden | Garden room | Utility room | Boiler room | WC | Fabulous principal bedroom suite with fitted wardrobes, an en suite shower room and access to the garden | Two further spacious bedrooms | Shower room | Car port | Workshop

Directions

What3words: ///trend.excalates.prompt takes you to the drive

General

Local Authority: Northumberland County Council

Services: Mains electricity and water, Biomass heating system (Main House) & LPG heating (The Bungalow)

Mobile and Broadband checker: Information can be found here <https://checker.ofcom.org.uk/en-gb/>

Wayleaves and easements: the property is sold subject to any wayleaves or easements, whether mentioned in these particulars or not

Tenure: Freehold

Council Tax Band: G

EPC Rating: D (Main House)
E (The Bungalow)

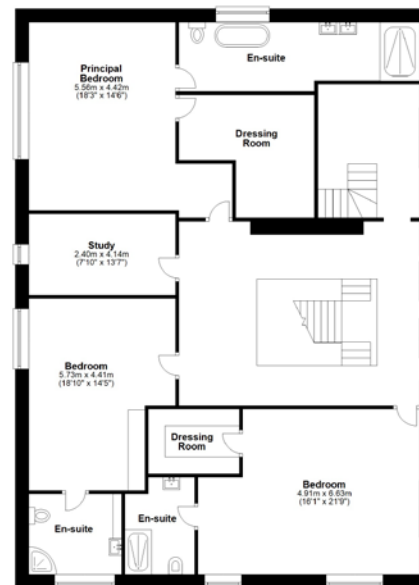
Guide Price: £2,500,000



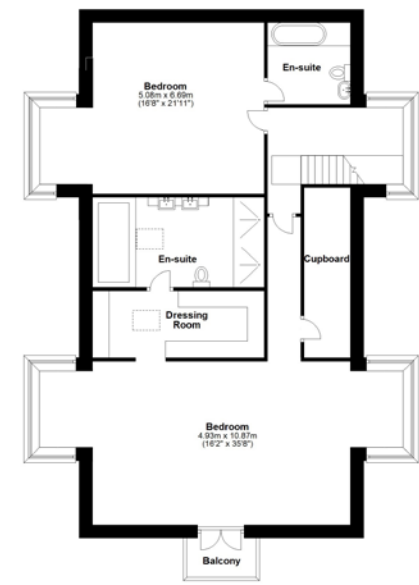




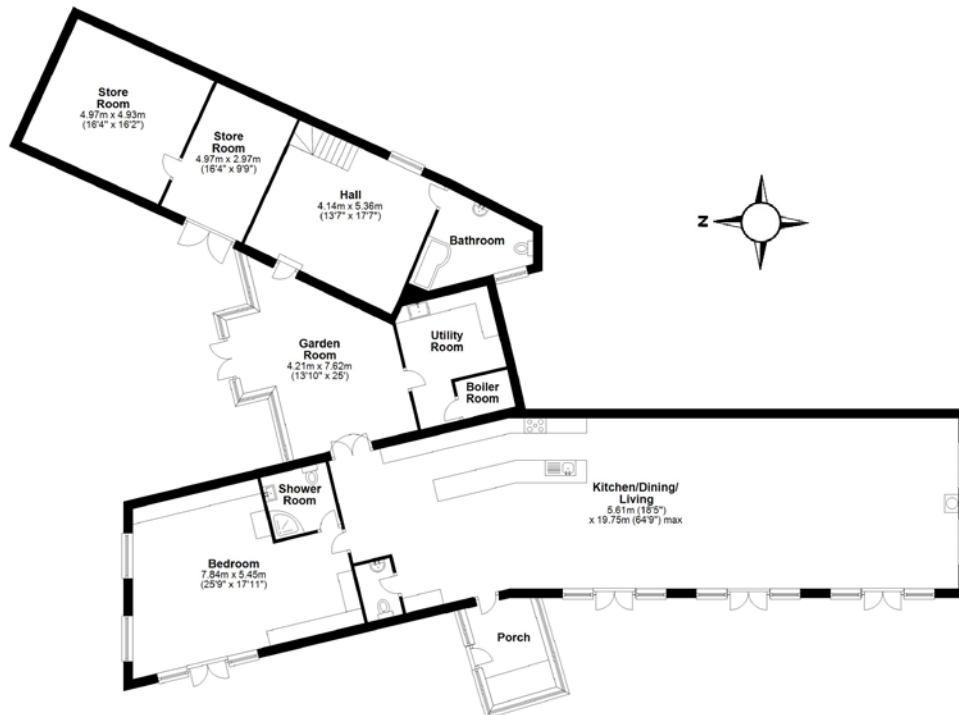
Total area: approx. 621.1 sq. metres (6685.6 sq. feet)



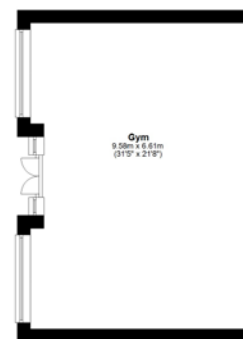
Total area: approx. 621.1 sq. metres (6685.6 sq. feet)



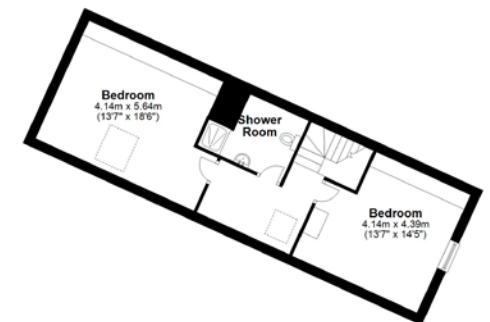
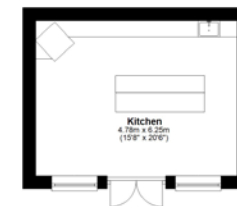
Total area: approx. 621.1 sq. metres (6685.6 sq. feet)



Total area: approx. 326.9 sq. metres (3518.5 sq. feet)



Total area: approx. 90.8 sq. metres (977.2 sq. feet)



Total area: approx. 326.9 sq. metres (3518.5 sq. feet)

Strutt & Parker London
43 Cadogan St, London SW3 2PR

+44 (0) 20 7591 2213
london@struttandparker.com
struttandparker.com

Strutt & Parker North East
One Trinity Gardens, Newcastle upon Tyne NE1 2HF

+44 (0) 1670 468168
northeast@struttandparker.com
struttandparker.com

Over 50 offices across England
and Scotland, including Prime
Central London

IMPORTANT NOTICE: Strutt & Parker gives notice that: 1. These particulars do not constitute an offer or contract or part thereof. 2. All descriptions, photographs and plans are for guidance only and should not be relied upon as statements or representations of fact. All measurements are approximate and not necessarily to scale. Any prospective purchaser must satisfy themselves of the correctness of the information within the particulars by inspection or otherwise. 3. Strutt & Parker does not have any authority to give any representations or warranties whatsoever in relation to this property (including but not limited to planning/building regulations), nor can it enter into any contract on behalf of the Vendor. 4. Strutt & Parker does not accept responsibility for any expenses incurred by prospective purchasers in inspecting properties which have been sold, let or withdrawn. 5. We are able to refer you to SPF Private Clients Limited ("SPF") for mortgage broking services, and to Alexander James Interiors ("AJI"), an interior design service. Should you decide to use the services of SPF, we will receive a referral fee from them of 25% of the aggregate of the fee paid to them by you for the arrangement of a mortgage and any fee received by them from the product provider. Should you decide to use the services of AJI, we will receive a referral fee of 10% of the net income received by AJI for the services they provide to you. 6. If there is anything of particular importance to you, please contact this office and Strutt & Parker will try to have the information checked for you. Photographs taken May 2025. Particulars prepared May 2025. Strutt & Parker is a trading style of BNP Paribas Real Estate Advisory & Property Management UK Limited





STRUTT & PARKER