



NO.11

# MILNER STREET

---

LONDON SW3



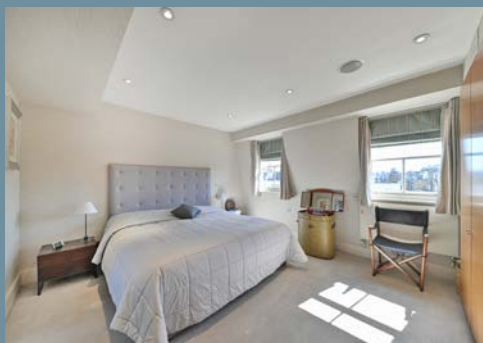
A BRIGHT AND STYLISH  
FOUR/FIVE BEDROOM WHITE  
STUCCO FRONTED FREEHOLD  
HOUSE, SITUATED ON  
THIS POPULAR AND WIDE  
CHELSEA STREET.

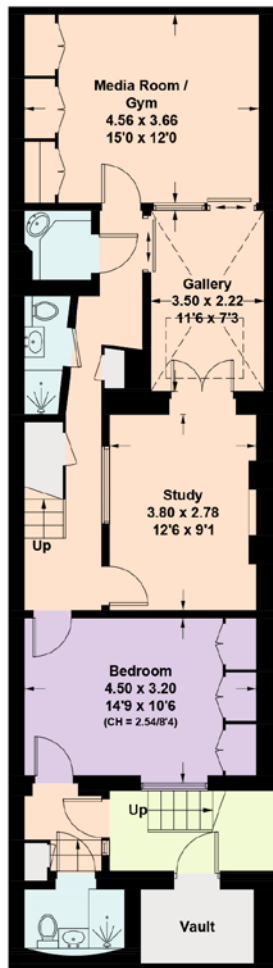




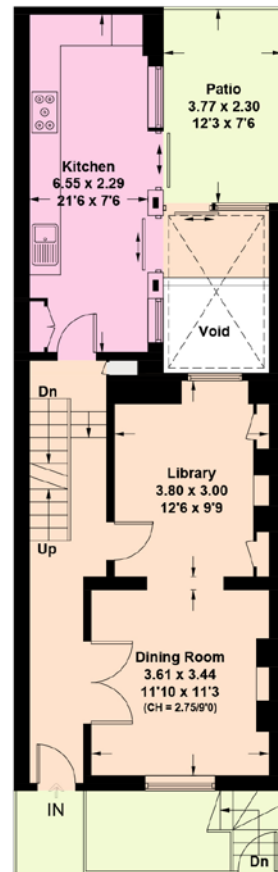


This well presented house is ideally located, being roughly equidistant between Knightsbridge, Sloane Square and South Kensington, and benefits from a double height atrium, cinema room, two terraces and air conditioning on the upper floors.

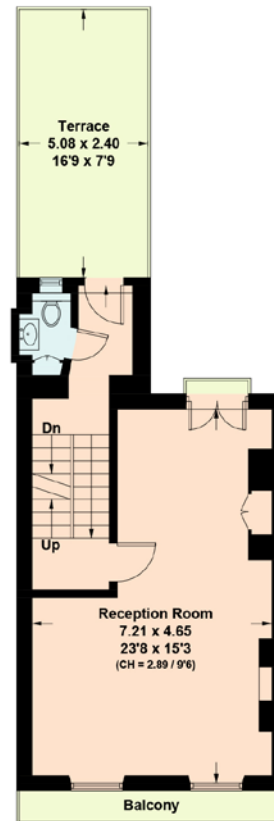




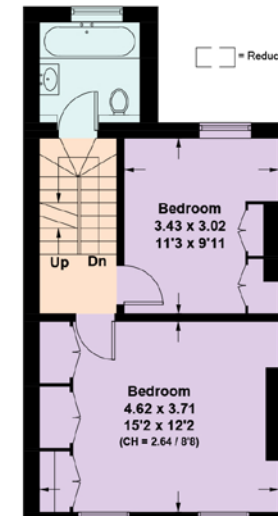
LOWER GROUND FLOOR



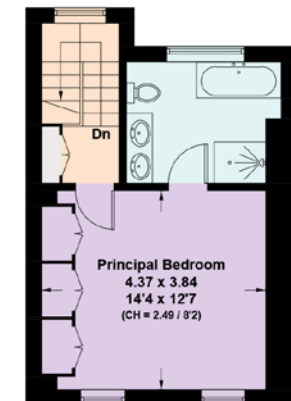
GROUND FLOOR



FIRST FLOOR



SECOND FLOOR



THIRD FLOOR

## APPROXIMATE FLOOR AREA

2,528 sq ft / 234.9 sq m

Vault = 36 sq ft / 3.4 sq m

Total = 2,564 sq ft / 238.2 sq m

Including limited use area 1.2 sq m / 13 sq ft

Illustration For Identification Only. Not to Scale.



## Chelsea Office

43 Cadogan Street, London SW3 2PR

**+44 (0)20 7225 3866**

chelsea@struttandparker.com



## Sloane Street Office

139 Sloane Street, London SW1X 9AY

**+44 (0) 20 7730 0822**

sloanestreet@savills.com

TENURE Freehold

LOCAL AUTHORITY The Royal Borough of Kensington and Chelsea

COUNCIL TAX Band H EPC RATING Band D RESIDENTS PARKING Available

BROADBAND Available CONSERVATION AREA Yes GUIDE PRICE £4,400,000

struttandparker.com

Over 50 offices across England and Scotland, including prime Central London

### IMPORTANT NOTICE

Strutt & Parker gives notice that: 1. These particulars do not constitute an offer or contract or part thereof. 2. All descriptions, photographs and plans are for guidance only and should not be relied upon as statements or representations of fact. All measurements are approximate and not necessarily to scale. Any prospective purchaser must satisfy themselves of the correctness of the information within the particulars by inspection or otherwise. 3. Strutt & Parker does not have any authority to give any representations or warranties whatsoever in relation to this property (including but not limited to planning/building regulations), nor can it enter into any contract on behalf of the Vendor. 4. Strutt & Parker does not accept responsibility for any expenses incurred by prospective purchasers in inspecting properties which have been sold, let or withdrawn. 5. We are able to refer you to SPF Private Clients Limited ("SPF") for mortgage broking services, and to Alexander James Interiors ("AJI"), an interior design service. Should you decide to use the services of SPF, we will receive a referral fee from them of 25% of the aggregate of the fee paid to them by you for the arrangement of a mortgage and any fee received by them from the product provider. Should you decide to use the services of AJI, we will receive a referral fee of 10% of the net income received by AJI for the services they provide to you. 6. If there is anything of particular importance to you, please contact this office and Strutt & Parker will try to have the information checked for you. Photographs taken April 2025. Particulars prepared April 2025. Strutt & Parker is a trading style of BNP Paribas Real Estate Advisory & Property Management UK Limited