



NORTHUMBERLAND
PLACE
NOTTING HILL W2



A stylish and beautifully presented home, which has been completely remodelled and extended.

Arranged over just four floors, this stylishly presented home offers excellent open plan entertaining space on the ground and lower ground floors, where the kitchen/dining room extends onto a charming westfacing patio garden. The principal bedroom suite is on the first floor, complete with a spacious en-suite bathroom, built in wardrobes, air conditioning and double doors leading onto a terrace. There are two double bedrooms and a family bathroom on the top floor. The house also benefits from a fourth bedroom/study with an ensuite shower room, and there is also planning permission to add a mansard extension (25/01264/FULL).

Northumberland Place is a hugely popular tree lined address in the heart of Notting Hill benefitting from close proximity to the excellent shopping and transport facilities of Westbourne Grove and Notting Hill Gate. The green spaces of Kensington Gardens and Holland Park are also close by.





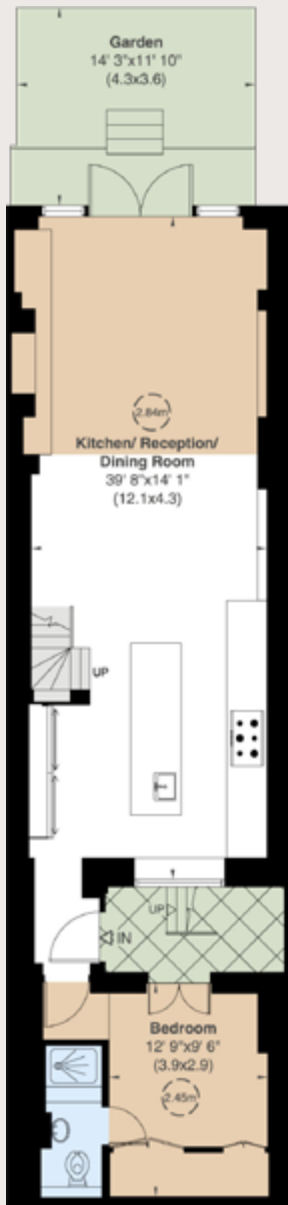




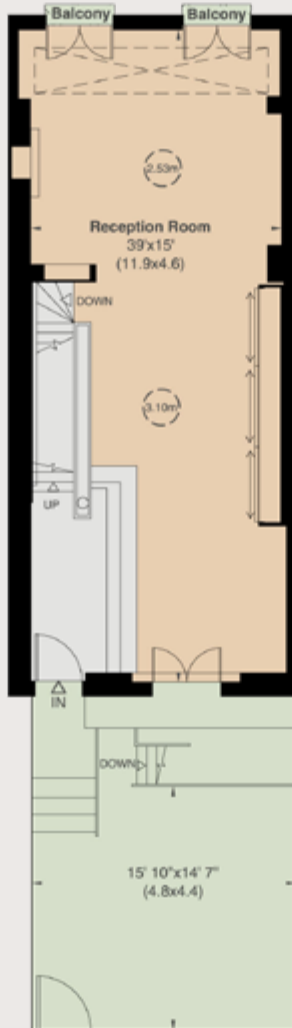


GROSS INTERNAL AREA (APPROX.)

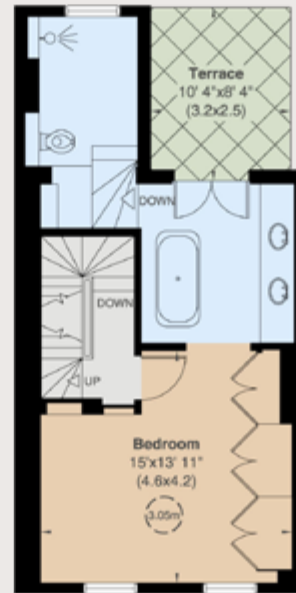
2,124 SQ FT / 197 SQ M



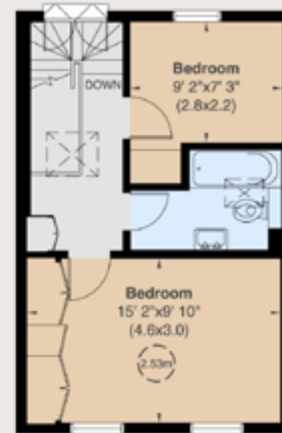
LOWER GROUND FLOOR



RAISED GROUND FLOOR



FIRST FLOOR



SECOND FLOOR

ACCOMMODATION

Entrance hall | Reception room | Kitchen/ dining/reception room | Principal bedroom with ensuite bathroom | Three bedrooms Bathroom | Shower room | Terrace | Garden

TERMS

Guide price: £4,650,000

Tenure: Freehold

Local Authority: City of Westminster

Council Tax: Band

EPC Rating: C

Parking: Residential Parking

Broadband: Available

Notting Hill

303 Westbourne Grove, London, W11 2QA

020 7221 1111

nottinghill@struttandparker.com

struttandparker.com

For the finer things in property.

**STRUTT
& PARKER**

BNP PARIBAS GROUP

IMPORTANT NOTICE: Strutt & Parker gives notice that: 1. These particulars do not constitute an offer or contract or part thereof. 2. All descriptions, photographs and plans are for guidance only and should not be relied upon as statements or representations of fact. All measurements are approximate and not necessarily to scale. Any prospective purchaser must satisfy themselves of the correctness of the information within the particulars by inspection or otherwise. 3. Strutt & Parker does not have any authority to give any representations or warranties whatsoever in relation to this property (including but not limited to planning/building regulations), nor can it enter into any contract on behalf of the Vendor. 4. Strutt & Parker does not accept responsibility for any expenses incurred by prospective purchasers in inspecting properties which have been sold, let or withdrawn. 5. We are able to refer you to SPF Private Clients Limited ("SPF") for mortgage broking services, and to Alexander James Interiors ("AJI"), an interior design service. Should you decide to use the services of SPF, we will receive a referral fee from them of 25% of the aggregate of the fee paid to them by you for the arrangement of a mortgage and any fee received by them from the product provider. Should you decide to use the services of AJI, we will receive a referral fee of 10% of the net income received by AJI for the services they provide to you. 6. If there is anything of particular importance to you, please contact this office and Strutt & Parker will try to have the information checked for you. Photographs taken May 2025. Particulars prepared May 2025. Strutt & Parker is a trading style of BNP Paribas Real Estate Advisory & Property Management UK Limited