



Oak Tree House, Oak Road
Cowthorpe, North Yorkshire

For the finer things in property.

**STRUTT
& PARKER**

BNP PARIBAS GROUP

Oak Tree House

Oak Road, Cowthorpe

North Yorkshire LS22 5EY

A substantial six-bedroom detached family home with an annexe, set in the heart of the desirable village of Cowthorpe.

A1(M) (Jct 46) 3.2 miles, Wetherby town centre 4.0 miles, Knaresborough 6.5 miles, Harrogate 9.5 miles, York 12.5 miles

Main House: Drawing room | Dining room | Kitchen/breakfast room | Utility | Study | Reception hall | Principal bedroom with en suite shower room | 4 Further bedrooms | Dressing room/bedroom 6 | 2 Bathrooms | Double garage | Garden | EPC rating E

Annexe - Gym | Games room/cinema room | Cloakroom | 1st Floor office/studio/storage

The property

Oak Tree House is a splendid detached family home which was built to the owners' specification hence being a unique property and features high ceilings, elegant corning and attractive accommodation arranged across three light-filled floors. The property benefits from underfloor heating on all floors apart from the top floor which is served by radiators.

The main reception room is the dual aspect drawing room with a hand carved marble fireplace and bay window that welcomes plenty of natural light. Double doors lead to the formal dining room and steps follow onto a ground floor fully tiled bathroom. To the rear is a well-equipped kitchen/breakfast room. The kitchen has wooden units to base and wall level, a range cooker and integrated appliances and ample space for as dining table, with the adjoining utility room providing further space for storage and appliances. Completing this floor is a useful study.

On the first floor, the generous principal bedroom features wooden flooring and has

extensive built-in storage and an en suite shower room. There are two further bedrooms and a separate dressing room, which could be used as an additional bedroom if required. The family bathroom can also be found on this floor and features a roll top bath and separate walk in shower.

The second floor provides two more double bedrooms among the eaves, which are deceptively spacious, both of which have plenty of storage.

A detached annexe provides a further 1,035 sq. ft. of living space and includes a gym, a games room/cinema room (which currently houses a full-sized snooker table) and a cloakroom on its ground floor. The first floor has a 37ft room, which could be used as an office, studio, bedroom or as a storage space.

Outside

To the front of the property is a well maintained, picturesque garden with topiary and water feature. A gravelled driveway leads to the rear and provides plenty of parking as well as a detached double garage which could be used for workshop space. A flag stone terrace leads up to a second private terrace with barbeque area and lawned garden.

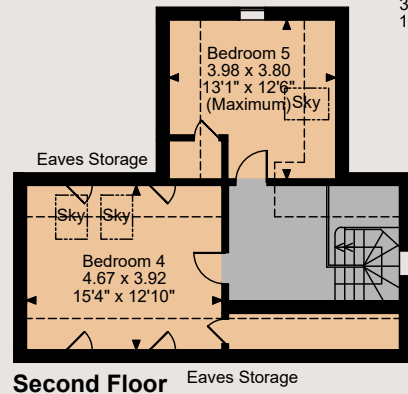
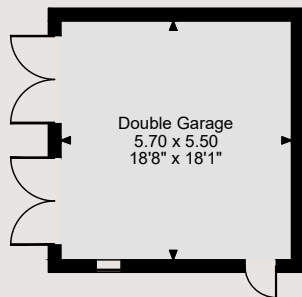
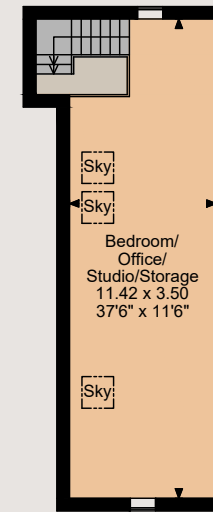
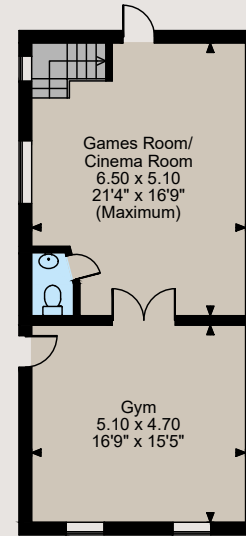
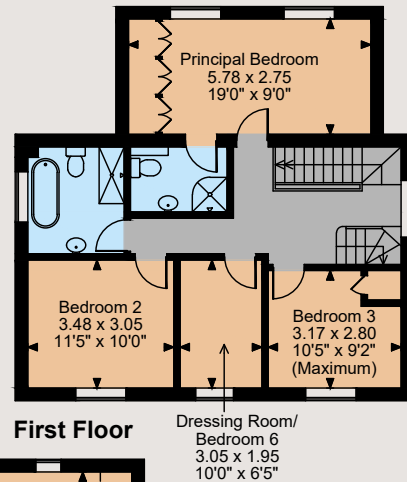
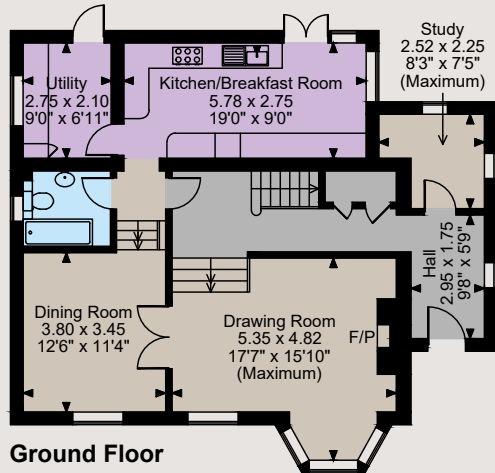
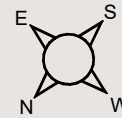
Location

The property is in the small village of Cowthorpe, surrounded by beautiful rolling countryside. The bustling market town of Wetherby is just four miles away, with its selection of shops, supermarkets, restaurants and cafés. There is a good choice of schools, which provide free transport from Cowthorpe to the local schools to include Forest School, Tockwith C of E Primary, King James School, Queen Ethelburga's and St. Aidans C of E. The area is well connected by road, with the A1(M) less than four miles away, and the A59 providing easy access to the historic town of Harrogate and the cathedral city of York, with its excellent shopping, leisure and cultural facilities. Cattle railway is just over three miles away which offers journey times of approx. two and a half hours to London.





Floorplans Oak Tree House, Oak Road Cowthorpe, Wetherby
Main House internal area 2,003 sq ft (186 sq m)
Garage internal area 337 sq ft (31 sq m)
Annexe internal area 1,035 sq ft (96 sq m)
Total internal area 3,375 sq ft (314 sq m)
For identification purposes only.



Directions

From Harrogate, take the A661/Wetherby Road away from the town centre and at the roundabout for the A658, take the second exit to continue onto the A661. After a further 2.3 miles turn left onto Deighton Road and continue for 1.5 miles into North Deighton and turn left onto Knaresborough Road. Turn right onto Ox Close Lane and Wetherby lane and continue for 2.4 miles into Cowthorpe. The property can be found on the right hand side shortly after the turning for War Field Lane.

General

Local Authority: North Yorkshire County Council

Services: Mains water, electric and drainage.

Council Tax: Band G

Tenure: Freehold

Offers Over: £900,000

Mobile phone coverage: Information can be found here <https://checker.ofcom.org.uk/>

Harrogate

9 Westgate House, Albert Street, Harrogate HG1 1JX

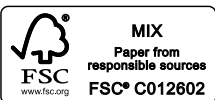
01423 561274

harrogate@struttandparker.com
struttandparker.com



Over 45 offices across England and Scotland, including Prime Central London

IMPORTANT NOTICE: Strutt & Parker gives notice that: 1. These particulars do not constitute an offer or contract or part thereof. 2. All descriptions, photographs and plans are for guidance only and should not be relied upon as statements or representations of fact. All measurements are approximate and not necessarily to scale. Any prospective purchaser must satisfy themselves of the correctness of the information within the particulars by inspection or otherwise. 3. Strutt & Parker does not have any authority to give any representations or warranties whatsoever in relation to this property (including but not limited to planning/building regulations), nor can it enter into any contract on behalf of the Vendor. 4. Strutt & Parker does not accept responsibility for any expenses incurred by prospective purchasers in inspecting properties which have been sold, let or withdrawn. 5. We are able to refer you to SPF Private Clients Limited ("SPF") for mortgage broking services, and to Alexander James Interiors ("AJI"), an interior design service. Should you decide to use the services of SPF, we will receive a referral fee from them of 25% of the aggregate of the fee paid to them by you for the arrangement of a mortgage and any fee received by them from the product provider. Should you decide to use the services of AJI, we will receive a referral fee of 10% of the net income received by AJI for the services they provide to you. 6. If there is anything of particular importance to you, please contact this office and Strutt & Parker will try to have the information checked for you. Photographs taken November 2023. Particulars prepared November 2023. Strutt & Parker is a trading style of BNP Paribas Real Estate Advisory & Property Management UK Limited



For the finer things in property.

