

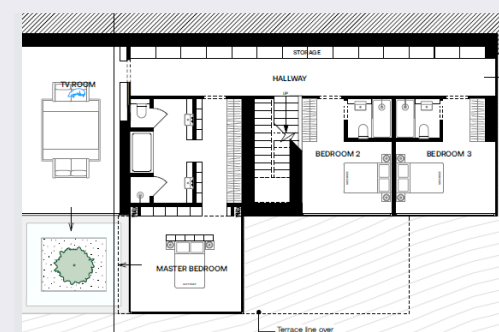
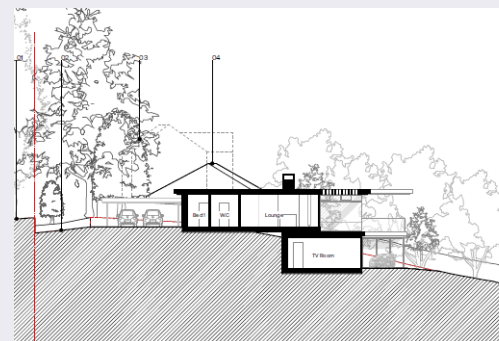
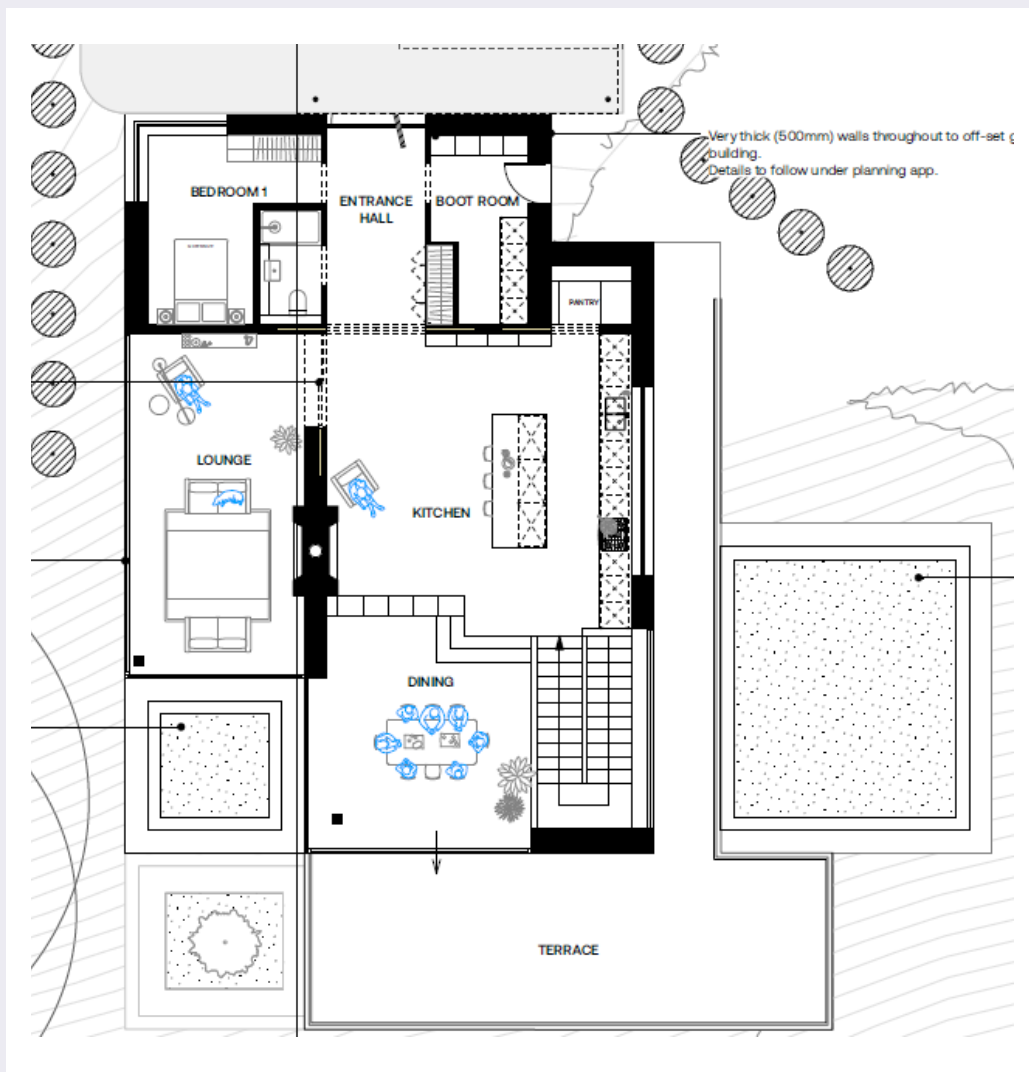


Land Adjacent to Aboret

Oldbury Lane, Ightham, Sevenoaks

**STRUTT
& PARKER**

BNP PARIBAS GROUP



A substantial building plot with planning consent for a stunning contemporary house.

The plot is located in an enviable setting in the highly regarded village of Ightham. The proposed house has been carefully and imaginatively architect designed for the setting, maximising the use of the levels and creating accommodation over two floors.

Full details of the planning application, decision notice and associated documents can be found on Tonbridge & Malling website via this link:

<https://planning.agileapplications.co.uk/tmbc/application-details/156842>

Prospective purchasers are advised that they must make their own enquiries of the planning authority.

The sought-after and picturesque Kentish village of Ightham has a parish church, recreation ground, farm/village shop, pubs and a primary school, all surrounded by numerous walks in the National Trust-owned Ightham Mote and Oldbury Woods and in the Kent Downs National Landscape. Nearby Sevenoaks is easily accessible and offers an extensive selection of shops, restaurants, supermarkets including Waitrose, a mainline station with services to central London in around 30 minutes.

Proposed internal area approx. 3200sq ft (297sq m)

General

Postcode TN15 9DD

Guide Price: £725,000

Tenure: Freehold

Services: Mains electricity, gas, drainage and water are available at the plot.

Local Authority: Tonbridge & Malling Borough Council

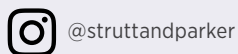
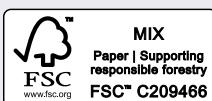
Sevenoaks

15 Bank Street, Sevenoaks, Kent TN13 1UW

01732 459900

sevenoaks@struttandparker.com
struttandparker.com

IMPORTANT NOTICE: Strutt & Parker gives notice that: 1. These particulars do not constitute an offer or contract or part thereof. 2. All descriptions, photographs and plans are for guidance only and should not be relied upon as statements or representations of fact. All measurements are approximate and not necessarily to scale. Any prospective purchaser must satisfy themselves of the correctness of the information within the particulars by inspection or otherwise. 3. Strutt & Parker does not have any authority to give any representations or warranties whatsoever in relation to this property (including but not limited to planning/building regulations), nor can it enter into any contract on behalf of the Vendor. 4. Strutt & Parker does not accept responsibility for any expenses incurred by prospective purchasers in inspecting properties which have been sold, let or withdrawn. 5. We are able to refer you to SPF Private Clients Limited ("SPF") for mortgage broking services, and to Alexander James Interiors ("AJI"), an interior design service. Should you decide to use the services of SPF, we will receive a referral fee from them of 25% of the aggregate of the fee paid to them by you for the arrangement of a mortgage and any fee received by them from the product provider. Should you decide to use the services of AJI, we will receive a referral fee of 10% of the net income received by AJI for the services they provide to you. 6. If there is anything of particular importance to you, please contact this office and Strutt & Parker will try to have the information checked for you. Cover picture is a computer generated image. Particulars prepared September 2025. Strutt & Parker is a trading style of BNP Paribas Real Estate Advisory & Property Management UK Limited



Over 50 offices across England and Scotland,
including Prime Central London

For the finer things in property.

