

Melton Court, Onslow Crescent

London, SW7



A triple aspect, larger than usual apartment overlooking the rear of the courtyard in a well-run, portered building in South Kensington.

Found on the seventh floor and offering vast lateral space, this bright triple aspect three double bedroom lateral flat offers a very well-proportioned family living space. The property is located within an extremely well run, secure purpose-built block with a porter.



1 RECEPTION ROOM



3 BEDROOMS



2 BATHROOMS



LEASEHOLD



1,726 SQ FT



**GUIDE PRICE
£2,750,000**



The property

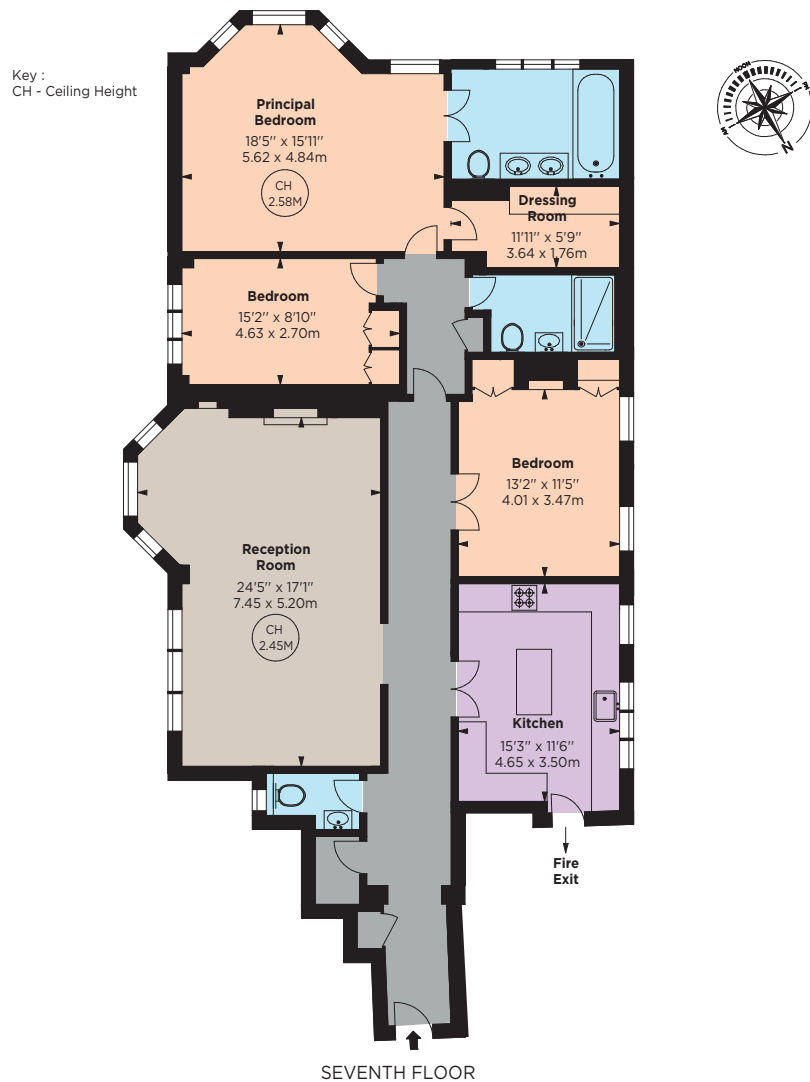
The apartment comprises a very spacious reception room, kitchen diner, three large double bedrooms, dressing room with en-suite bathroom, shower room and a separate guest cloakroom. The property also benefits from ample storage throughout and lift access. The flat is very quietly positioned to the rear of the building with attractive views.

Location

Melton Court is extremely well-located for the shops, restaurants and bars of South Kensington and is a stone's throw away from the underground station, providing excellent transport links across London.







Floorplans

Gross internal area 1726 sq ft (160.35 sq m)
For identification purposes only.

General

Tenure: Leasehold approximately 971 years

Local Authority: The Royal Borough of Kensington and Chelsea

Service Charge: Approximately £12,000 PA

Ground Rent: Peppercorn

Council Tax: Band G

EPC Rating: G

South Kensington

90 Old Brompton Road, London, SW7 3LQ

020 7581 7000

southken@struttandparker.com

struttandparker.com

IMPORTANT NOTICE: Strutt & Parker gives notice that: 1. These particulars do not constitute an offer or contract or part thereof. 2. All descriptions, photographs and plans are for guidance only and should not be relied upon as statements or representations of fact. All measurements are approximate and not necessarily to scale. Any prospective purchaser must satisfy themselves of the correctness of the information within the particulars by inspection or otherwise. 3. Strutt & Parker does not have any authority to give any representations or warranties whatsoever in relation to this property (including but not limited to planning/building regulations), nor can it enter into any contract on behalf of the Vendor. 4. Strutt & Parker does not accept responsibility for any expenses incurred by prospective purchasers in inspecting properties which have been sold, let or withdrawn. 5. We are able to refer you to SPF Private Clients Limited ("SPF") for mortgage broking services, and to Alexander James Interiors ("AJI"), an interior design service. Should you decide to use the services of SPF, we will receive a referral fee from them of 25% of the aggregate of the fee paid to them by you for the arrangement of a mortgage and any fee received by them from the product provider. Should you decide to use the services of AJI, we will receive a referral fee of 10% of the net income received by AJI for the services they provide to you. 6. If there is anything of particular importance to you, please contact this office and Strutt & Parker will try to have the information checked for you. Photographs taken November 2024. Particulars prepared November 2024. Strutt & Parker is a trading style of BNP Paribas Real Estate Advisory & Property Management UK Limited



@struttandparker

Over 50 offices across England and Scotland,
including Prime Central London

For the finer things in property.

