

# Onslow Gardens, London



# Strutt & Parker

Land and property. Since 1885.

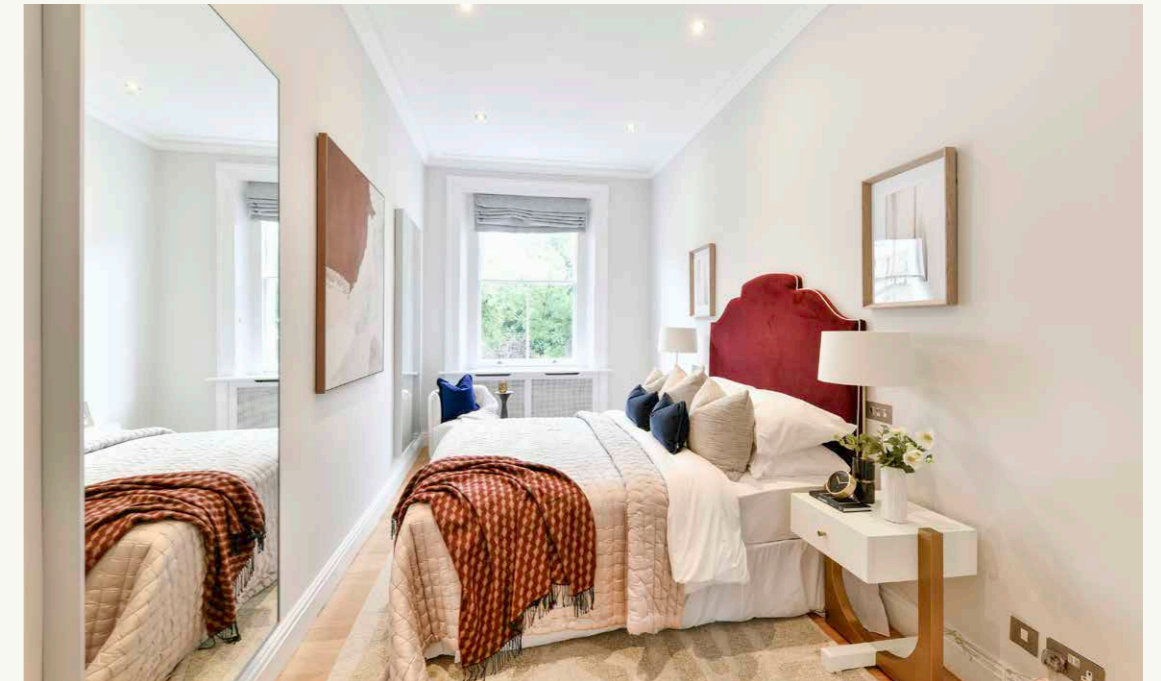
## Well-presented apartment overlooking Onslow Gardens

### Property description

Enjoying one of the area's most desirable positions, this second-floor apartment occupies part of a Grade II-listed terraced stucco townhouse, dating back to the mid-19th century. A grand Doric portico creates an imposing first impression, while internally character features include sash windows, built-in cabinetry and an open fireplace with marble/stone surround. The neutral interiors are well presented and easily personalised by the new owner.

The accommodation is arranged around a central hallway with a useful storage cupboard. There are two double bedrooms, one to the front and one to the rear, both with built-in storage, and a well-equipped bathroom with bath and shower over.

The kitchen features contemporary stainless steel and glass cabinets with a generous amount of storage, as well as a fitted gas hob, dishwasher and oven. A hatch provides open access to the adjoining reception room, a fabulously light and airy room with space for a dining table and seating area, and a wall of floor-to-ceiling cupboards and bookshelves which makes for a visually appealing and practical feature.



The front-facing reception room and bedroom overlook Onslow Gardens, a slice of green in the heart of the city. Residents may access the garden square using an electronic key card (applications via Onslow Square Residents Association) to enjoy the beautifully landscaped paths and the plethora of established trees including plum, cherry, crab apple, lime, birch, holm oak, and many traditional London planes.

### Location

Onslow Gardens is one of the most sought-after garden squares in the heart of South Kensington with a broad array of amenities, shops and restaurants within close proximity. Transport links abound, with Gloucester Road and South Kensington tube stations offering access to the District, Circle and Piccadilly lines. In addition, Hyde Park is under a mile to the north.

Postcode region: SW7

### General

Local Authority: The Royal Borough of Kensington and Chelsea  
Services: Mains electricity, drainage and water, gas central heating.

Tenure: Leasehold from 19 December 2012 to 22 December 2138

Council Tax: Band G

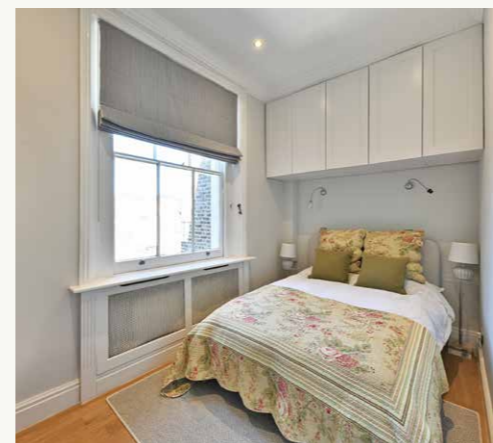
Parking: Residential parking the royal borough of Chelsea and Kensington.

EPC Rating: C

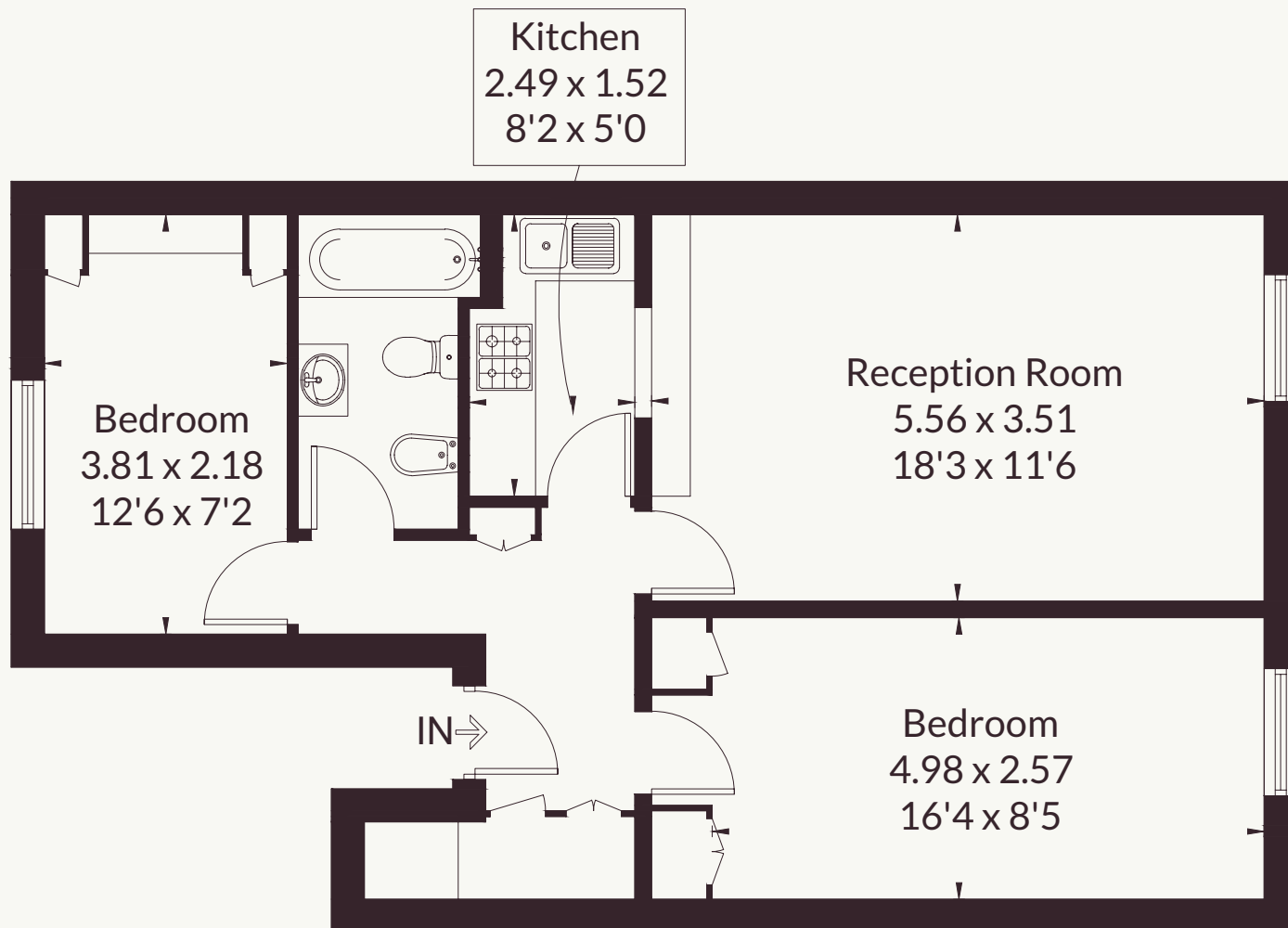
Mobile and Broadband checker: Information can be found here <https://checker.ofcom.org.uk/en-gb/>

650 sq ft (60 sq m)  
Views of Onslow Gardens  
Two bedrooms  
Well-presented interiors  
Centrally positioned  
Leasehold | Residential

Guide price £1,375,000



Approximate Floor Area = 60 sq m / 650 sq ft



## Second Floor

Drawn for illustration and identification purposes only by @fourwalls-group.com #107883

### Strutt & Parker South Kensington

90 Old Brompton Road, London, SW7 3LQ

020 7581 7000 | southkensington@struttandparker.com



@struttandparker struttandparker.com

IMPORTANT NOTICE: Strutt & Parker gives notice that: 1. These particulars do not constitute an offer or contract or part thereof. 2. All descriptions, photographs and plans are for guidance only and should not be relied upon as statements or representations of fact. All measurements are approximate and not necessarily to scale. Any prospective purchaser must satisfy themselves of the correctness of the information within the particulars by inspection or otherwise. 3. Strutt & Parker does not have any authority to give any representations or warranties whatsoever in relation to this property (including but not limited to planning/building regulations), nor can it enter into any contract on behalf of the Vendor. 4. Strutt & Parker does not accept responsibility for any expenses incurred by prospective purchasers in inspecting properties which have been sold, let or withdrawn. 5. We are able to refer you to SPF Private Clients Limited ("SPF") for mortgage broking services, and to Alexander James Interiors ("AJI"), an interior design service. Should you decide to use the services of SPF, we will receive a referral fee from them of 25% of the aggregate of the fee paid to them by you for the arrangement of a mortgage and any fee received by them from the product provider. Should you decide to use the services of AJI, we will receive a referral fee of 10% of the net income received by AJI for the services they provide to you. 6. If there is anything of particular importance to you, please contact this office and Strutt & Parker will try to have the information checked for you. Strutt & Parker is a trading style of BNP Paribas Real Estate Advisory & Property Management UK Limited. Template by Fourwalls. Photographs taken TBC. Particulars prepared May 2026.

