



Onslow Mews West, South Kensington, SW7

For the finer things in property.

**STRUTT  
& PARKER**

BNP PARIBAS GROUP

## Onslow Mews West, South Kensington, SW7

A very pretty end of terrace mews house in this highly regarded location in Onslow Mews West.

3 Bedrooms | 2 Bathrooms | 1 Reception room  
Garage | Roof terrace | House | EPC Rating D

The property is conveniently low built and lateral with accommodation arranged over the ground and first floors only. The ground floor offers a comfortable entertaining/living area with a splendid reception room overlooking Onslow Mews West and a semi-open plan kitchen/breakfast room. On the first floor are three bedrooms, one of which includes a principal bedroom with a pretty balcony and en suite bathroom. The third bedroom is a single bedroom with direct access to the roof terrace that can also be accessed via separate entrance on the same floor. Both additional bedrooms enjoy a spacious family bathroom. The house therefore makes for the ideal London home or a pied-a-terre.

This charming house is quietly positioned just off renowned Onslow Gardens, SW7 and benefits from a well sized garage which is held on a separate lease.

Onslow Mews west is a pretty cul-de-sac in the heart of South Kensington and is located between Onslow Gardens and Onslow Square. The house is therefore very well located for the plethora of shops, bars and restaurants that the area provides and is also within close proximity to either South Kensington or Gloucester Road tube stations.

### Terms

**Tenure:** Leasehold, expiring August 2143

**Service Charge:** £1,200 PA

**Ground Rent:** TBC

**Council Tax:** Band G

**Local Authority:** The Royal Borough of Kensington and Chelsea

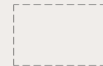
**Asking Price:** £2,500,000





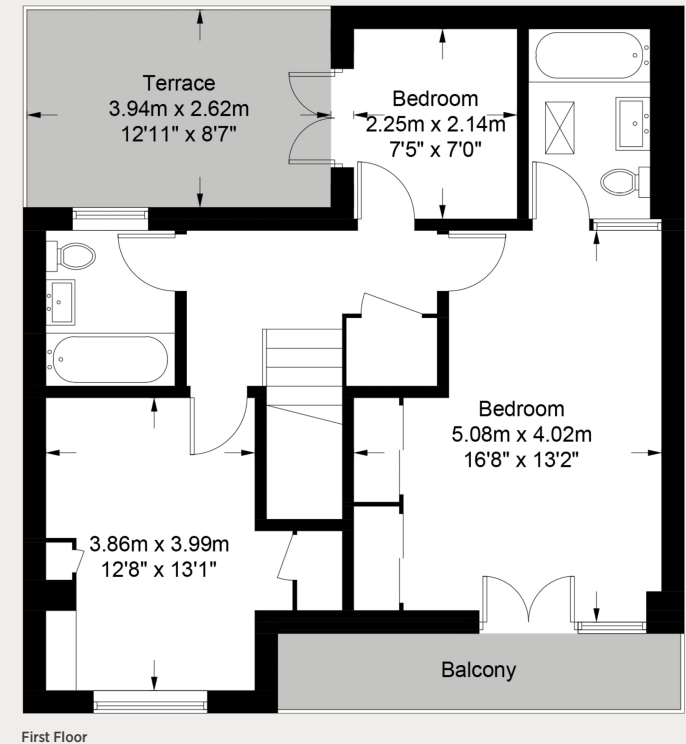
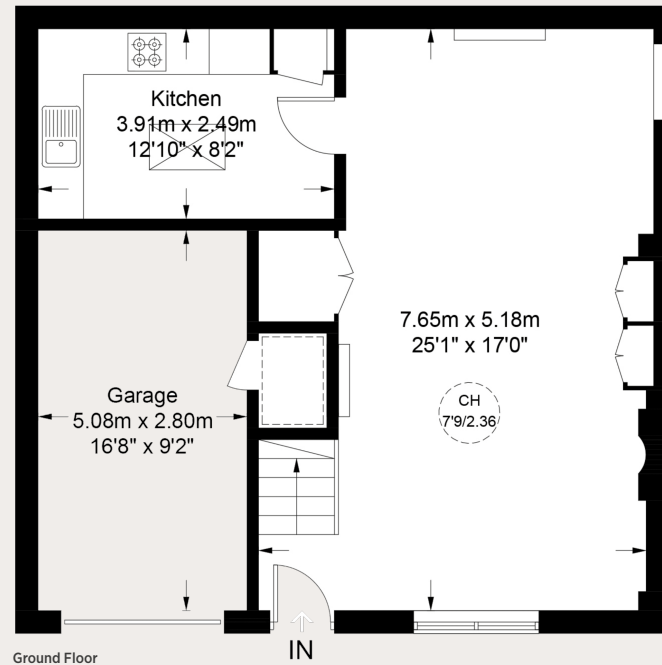




 = Reduced headroom below 1.5m / 5'0"



Gross Internal Floor Area  
1,087 sq ft (101 sq m) excluding reduced headroom  
Garage 150 sq ft (13.9 sq m)  
Reduced headroom 12 sq ft (1.1 sq m)  
Total 1,249 sq ft (116 sq m)  
For identification purposes only.



## South Kensington

90 Old Brompton Road, London, SW7 3LQ

**020 7581 7000**

southken@struttandparker.com

### IMPORTANT NOTICE

Strutt & Parker gives notice that: 1. These particulars do not constitute an offer or contract or part thereof. 2. All descriptions, photographs and plans are for guidance only and should not be relied upon as statements or representations of fact. All measurements are approximate and not necessarily to scale. Any prospective purchaser must satisfy themselves of the correctness of the information within the particulars by inspection or otherwise. 3. Strutt & Parker does not have any authority to give any representations or warranties whatsoever in relation to this property (including but not limited to planning/building regulations), nor can it enter into any contract on behalf of the Vendor. 4. Strutt & Parker does not accept responsibility for any expenses incurred by prospective purchasers in inspecting properties which have been sold, let or withdrawn. 5. We are able to refer you to SPF Private Clients Limited ("SPF") for mortgage broking services, and to Alexander James Interiors ("AJI"), an interior design service. Should you decide to use the services of SPF, we will receive a referral fee from them of 25% of the aggregate of the fee paid to them by you for the arrangement of a mortgage and any fee received by them from the product provider. Should you decide to use the services of AJI, we will receive a referral fee of 10% of the net income received by AJI for the services they provide to you. 6. If there is anything of particular importance to you, please contact this office and Strutt & Parker will try to have the information checked for you. Photographs taken September 2024. Particulars prepared September 2024. Strutt & Parker is a trading style of BNP Paribas Real Estate Advisory & Property Management UK Limited.



Over 50 offices across England and Scotland,  
including Prime Central London

**For the finer things in property.**

