



Onslow Square, SW7

STRUTT & PARKER
BNP PARIBAS GROUP

Onslow Square, SW7

A large two bedroom and two bathroom flat with its own front door on Onslow Square.

Spread over 1250 sq ft this two bedroom and two bathroom flat is found in the heart of Onslow Square. The flat enjoys access to Onslow Square gardens directly opposite and has large storage vaults.

Principal suite (en suite) | Second bedroom
Family bathroom | Kitchen | Dining room
Reception room | Porter | EPC D | Council tax G

Enjoying a large lateral footprint including a lovely entrance hall, separate kitchen with dining room and additional reception room, this superb flat is located in one of the most desirable parts of Onslow Square.

The flat enjoys access to Onslow Square gardens which includes a tennis court, children's play area and large grass lawns. There is a live-in porter/caretaker who has been in-situ for many years. This charming property is offered chain free and with immediate occupation

Terms

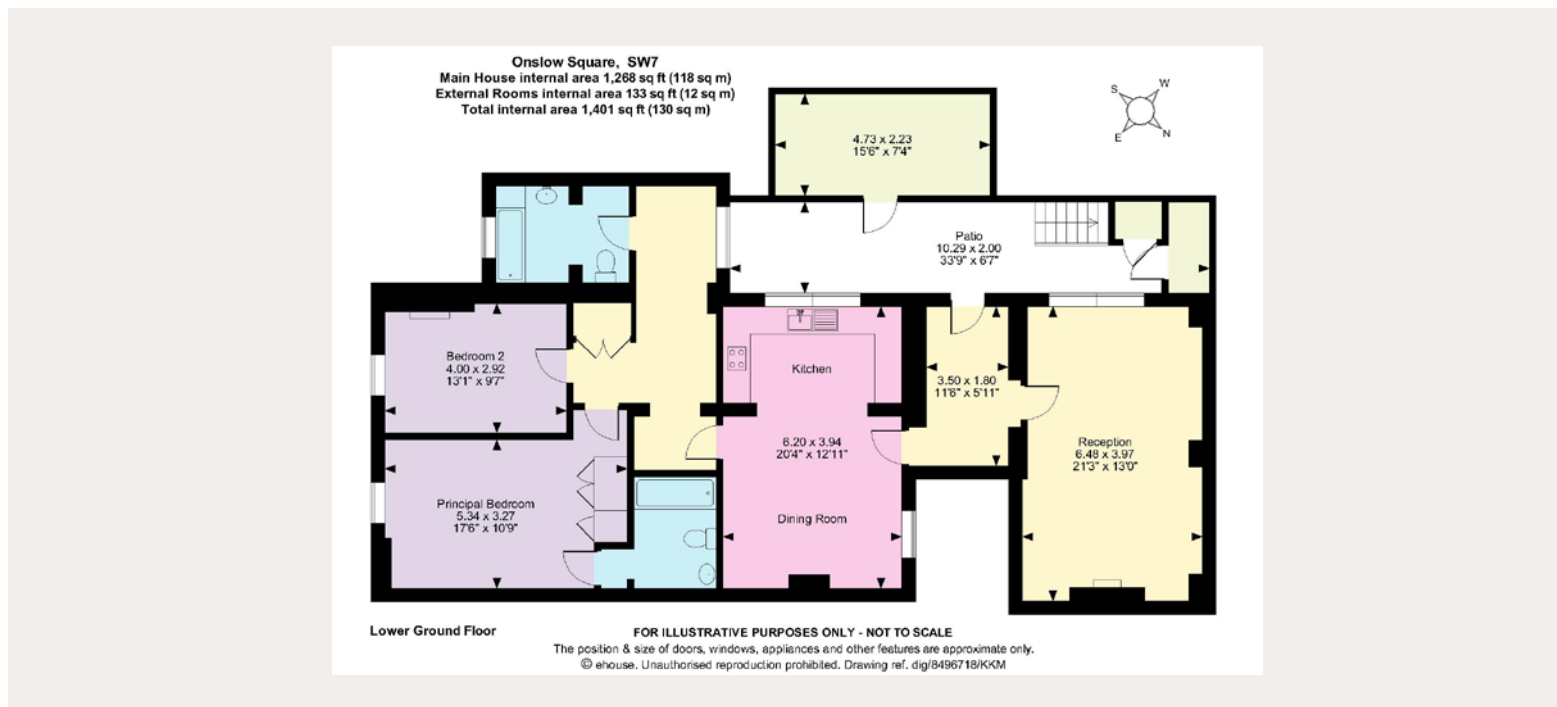
Tenure: Leasehold expires June 2106

Local Authority: The Royal Borough of Kensington and Chelsea

Ground Rent: £450 per annum (approx)

Service Charge: £10,323 per annum (approx)

Guide Price: £1,395,000



South Kensington

90 Old Brompton Road, London, SW7 3LQ

020 7581 7000

southken@struttandparker.com

IMPORTANT NOTICE: Strutt & Parker gives notice that: 1. These particulars do not constitute an offer or contract or part thereof. 2. All descriptions, photographs and plans are for guidance only and should not be relied upon as statements or representations of fact. All measurements are approximate and not necessarily to scale. Any prospective purchaser must satisfy themselves of the correctness of the information within the particulars by inspection or otherwise. 3. Strutt & Parker does not have any authority to give any representations or warranties whatsoever in relation to this property (including but not limited to planning/building regulations), nor can it enter into any contract on behalf of the Vendor. 4. Strutt & Parker does not accept responsibility for any expenses incurred by prospective purchasers in inspecting properties which have been sold, let or withdrawn. 5. We are able to refer you to SPF Private Clients Limited ("SPF") for mortgage broking services, and to Alexander James Interiors ("AJI"), an interior design service. Should you decide to use the services of SPF, we will receive a referral fee from them of 25% of the aggregate of the fee paid to them by you for the arrangement of a mortgage and any fee received by them from the product provider. Should you decide to use the services of AJI, we will receive a referral fee of 10% of the net income received by AJI for the services they provide to you. 6. If there is anything of particular importance to you, please contact this office and Strutt & Parker will try to have the information checked for you. Photographs taken October 2023. Particulars prepared October 2023. Strutt & Parker is a trading style of BNP Paribas Real Estate Advisory & Property Management UK Limited.