



OVINGTON STREET

CHELSEA SW3

AN ATTRACTIVE GRADE II LISTED PERIOD HOUSE,
WITH A 20 X 15 FT GARDEN, SITUATED ON A QUIET
RESIDENTIAL STREET IN CHELSEA

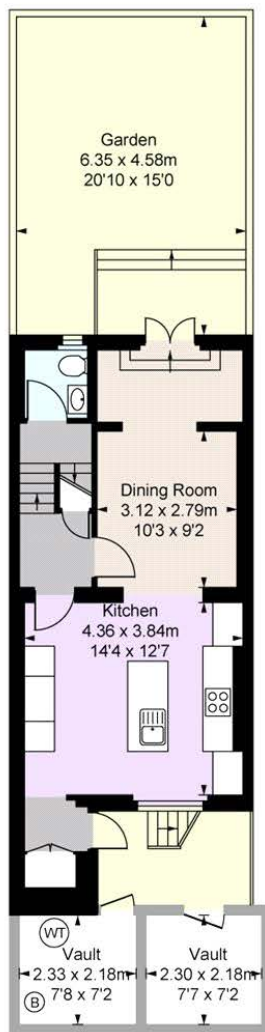


The house comprises a principal bedroom and en suite, further 2 double bedrooms, bathroom and WC. The kitchen dining area also leads onto a beautiful patio.

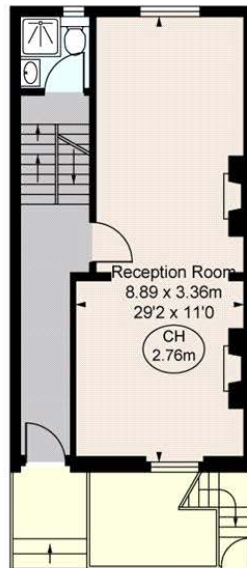
Ovington Street is a wide street ideally situated between Walton Street and Milner Street and roughly equidistant between Sloane Square 0.5m, South Kensington 0.5m and Knightsbridge 0.6m.







LOWER GROUND FLOOR
446 sq ft / 41.47 sq m



GROUND FLOOR
423 sq ft / 39.26 sq m



APPROXIMATE AREA

Gross Internal Area 1,547 sq ft / 143.75 sq m

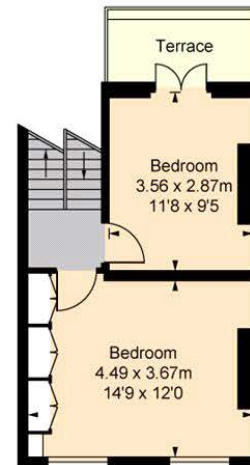
Vaults 113 sq ft / 10.53 sq m

Total Areas Including Vaults 1,661 sq ft / 154.28 sq m

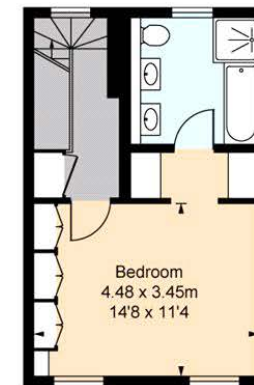
Including restricted height under 1.5m [] [] [] [] [] []

CH = Ceiling Heights

Illustration For Identification Only. Not to Scale.



FIRST FLOOR
333 sq ft / 30.94 sq m



SECOND FLOOR
345 sq ft / 32.08 sq m

**STRUTT
& PARKER**

BNP PARIBAS GROUP

Chelsea Office

43 Cadogan Street, London SW3 2PR

+44 (0)20 7225 3866

chelsea@struttandparker.com

TENURE Freehold

LOCAL AUTHORITY The Royal Borough of Kensington and Chelsea

EPC RATING D

COUNCIL TAX H

ASKING PRICE £3,800,000

struttandparker.com

Over 50 offices across England and Scotland, including Prime Central London

IMPORTANT NOTICE

Strutt & Parker gives notice that: 1. These particulars do not constitute an offer or contract or part thereof. 2. All descriptions, photographs and plans are for guidance only and should not be relied upon as statements or representations of fact. All measurements are approximate and not necessarily to scale. Any prospective purchaser must satisfy themselves of the correctness of the information within the particulars by inspection or otherwise. 3. Strutt & Parker does not have any authority to give any representations or warranties whatsoever in relation to this property (including but not limited to planning/building regulations), nor can it enter into any contract on behalf of the Vendor. 4. Strutt & Parker does not accept responsibility for any expenses incurred by prospective purchasers in inspecting properties which have been sold, let or withdrawn. 5. We are able to refer you to SPF Private Clients Limited ("SPF") for mortgage broking services, and to Alexander James Interiors ("AJI"), an interior design service. Should you decide to use the services of SPF, we will receive a referral fee from them of 25% of the aggregate of the fee paid to them by you for the arrangement of a mortgage and any fee received by them from the product provider. Should you decide to use the services of AJI, we will receive a referral fee of 10% of the net income received by AJI for the services they provide to you. 6. If there is anything of particular importance to you, please contact this office and Strutt & Parker will try to have the information checked for you. Photographs taken April 2024. Particulars prepared April 2024. Strutt & Parker is a trading style of BNP Paribas Real Estate Advisory & Property Management UK Limited

Brochure by TwentyOneFifty Tel: 020 8778 2150 Photography by Ben Thompson Tel: 07799 620799