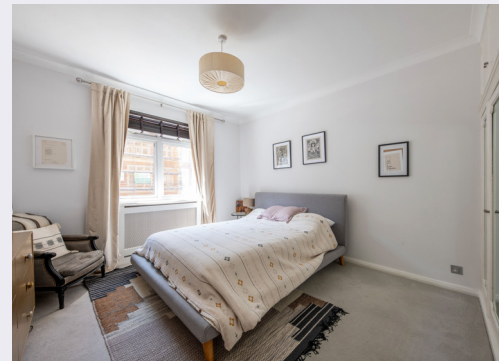


Palace Court

Notting Hill, W2





A fantastic, first floor flat with a west-facing balcony, lift and portorage.

Located on this sought-after Notting Hill address, this wonderful three-bedroom apartment has lateral entertaining space and dual aspect light.

Located moments from the green spaces of Hyde Park, this flat is perfectly located for the amenities of Westbourne Grove, as well as the shopping and transport facilities of both Notting Hill Gate (Circle, District and Central Lines) and Bayswater (Circle and District Lines).

Floorplans

Gross internal area 1,424 sq ft (132 sq m)
For identification purposes only.

General

Tenure: Leasehold. 189 years from 25 March 1972

Local Authority: City of Westminster

Service Charge: £14,000 per annum, including sinking fund contribution

Ground Rent: Peppercorn

Council Tax: Band H

EPC Rating: C

Parking: Resident's permit

Broadband: Available

Asking Price: £1,890,000

Notting Hill

303 Westbourne Grove, London, W11 2QA

020 7221 1111

nottinghill@struttandparker.com

struttandparker.com



@struttandparker

Over 50 offices across England and Scotland,
including Prime Central London

For the finer things in property.

