



Palace Court, Notting Hill, W2

For the finer things in property.

**STRUTT
& PARKER**

BNP PARIBAS GROUP 

Palace Court, Notting Hill, W2

A spacious two-bedroom flat with private entrance, porter and patio.

Comprised over 1,000 sq ft this well-proportioned flat includes a large reception room with french doors leading to a patio. There are two bedrooms with en suite bathrooms, a study and guest WC. The flat further benefits from a private entrance through a patio garden and a porter.

Located moments from Hyde Park, this flat is perfectly positioned for the amenities of Westbourne Grove as well as the shopping and transport facilities of both Notting Hill Gate (Circle, District and Central Lines) and Bayswater (Circle and District Lines).

Private entrance | Entrance hall | Kitchen
Reception room | Two bedrooms | Two bath/
shower rooms | Study | Guest WC | Patio
EPC rating C

Terms

Tenure: Leasehold, expiry date 01.04.2999

Service Charge: Approximately £3,000 pa

Ground Rent: Peppercorn

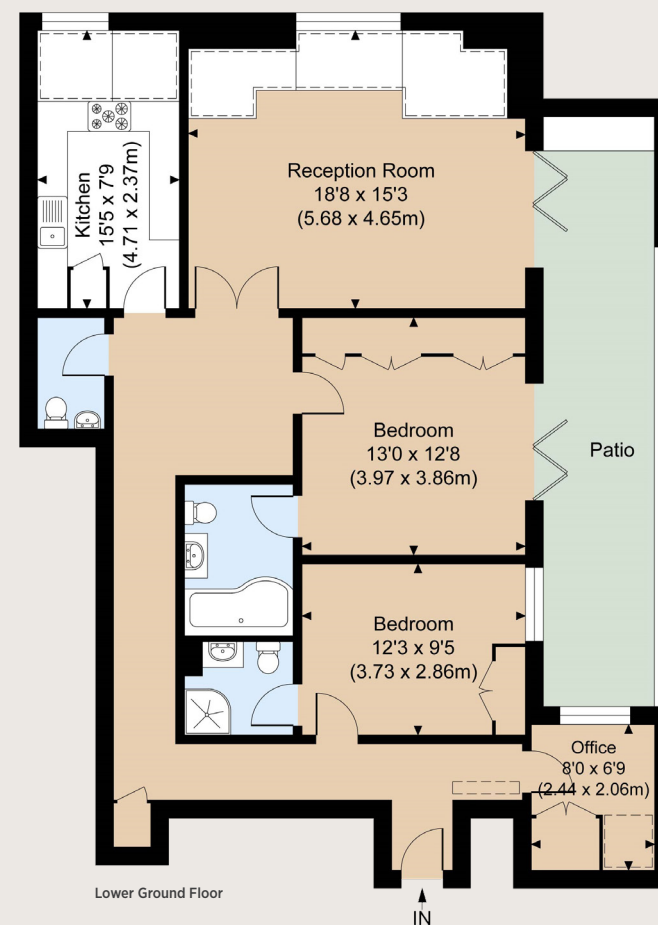
Council Tax: Band G

Local Authority: City of Westminster

Asking Price: OIEO £1,000,000



Approximate Gross Internal Area 1,101 sq ft (102.30 sq m) including reduced headroom
For identification purposes only.



Notting Hill

303 Westbourne Grove, London, W11 2QA

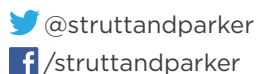
020 7221 1111

nottinghill@struttandparker.com

struttandparker.com

IMPORTANT NOTICE

Strutt & Parker gives notice that: 1. These particulars do not constitute an offer or contract or part thereof. 2. All descriptions, photographs and plans are for guidance only and should not be relied upon as statements or representations of fact. All measurements are approximate and not necessarily to scale. Any prospective purchaser must satisfy themselves of the correctness of the information within the particulars by inspection or otherwise. 3. Strutt & Parker does not have any authority to give any representations or warranties whatsoever in relation to this property (including but not limited to planning/building regulations), nor can it enter into any contract on behalf of the Vendor. 4. Strutt & Parker does not accept responsibility for any expenses incurred by prospective purchasers in inspecting properties which have been sold, let or withdrawn. 5. We are able to refer you to SPF Private Clients Limited ("SPF") for mortgage broking services, and to Alexander James Interiors ("AJI"), an interior design service. Should you decide to use the services of SPF, we will receive a referral fee from them of 25% of the aggregate of the fee paid to them by you for the arrangement of a mortgage and any fee received by them from the product provider. Should you decide to use the services of AJI, we will receive a referral fee of 10% of the net income received by AJI for the services they provide to you. 6. If there is anything of particular importance to you, please contact this office and Strutt & Parker will try to have the information checked for you. Photographs taken November 2023. Particulars prepared November 2023. Strutt & Parker is a trading style of BNP Paribas Real Estate Advisory & Property Management UK Limited.



Over 45 offices across England and Scotland,
including Prime Central London

For the finer things in property.

