

Palmerston House, Kensington



Strutt
& Parker

Land and property. Since 1885.

A well laid out and beautifully presented first floor studio apartment set within the highly regarded portered building Palmerston House, ideally positioned just south of Notting Hill Gate in the Hillgate Village of Kensington W8.

The apartment offers bright and well-proportioned accommodation and would make an ideal pied-à-terre or investment purchase.

Residents benefit from lift access, secure underground parking, onsite portering and a share of freehold.

Palmerston House is a sought-after portered development positioned within one of Kensington's most charming enclaves, renowned for its colourful Victorian architecture, village atmosphere and excellent local amenities.



Location

Palmerston House occupies an enviable position towards the western end of Kensington Place, ideally located for the restaurants and shops of Kensington Church Street, the open spaces of Holland Park and Kensington Gardens, and the excellent transport connections at Notting Hill Gate Underground Station (Central, Circle and District lines).

Postcode region: W8

General

Tenure: Leasehold, 999 Years from 29th September 1973
Local Authority: Royal Borough of Kensington & Chelsea
Council Tax: Band D
EPC Rating: C
Service Charge: £4,388 per annum
Bi-Annual Service Charge (25/12/2025 - 23/06/2026) £1,780.78
Bi-Annual Reserve Fund (25/12/2025 - 23/06/2026) £413.05
Ground Rent: Peppercorn
Parking: Underground
Mobile coverage and broadband: Information can be found here: <https://checker.ofcom.org.uk/en-gb/mobile-coverage>

503 sq ft (46.77 sq m)
Porter
Underground Parking
Leasehold

Asking price £675,000

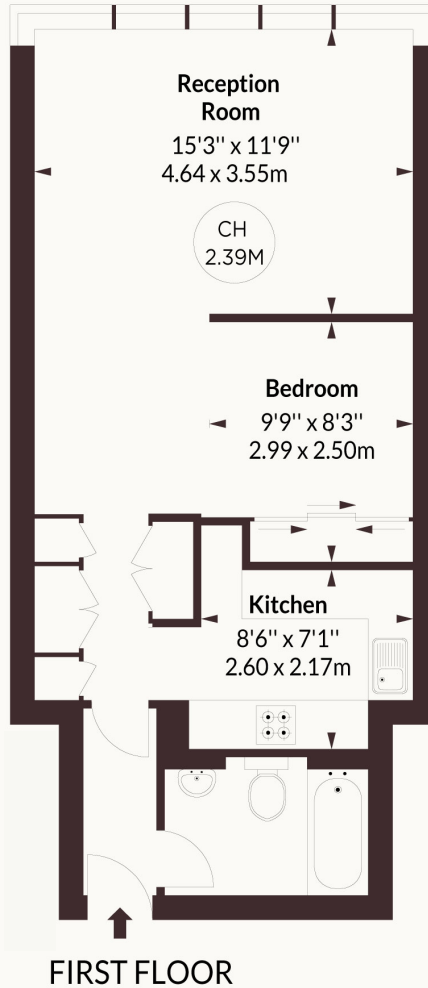


Palmerston House, W8

APPROX. GROSS INTERNAL AREA *
503 Sq Ft - 46.77 Sq M



Key:
CH - Ceiling Height



This floorplan is for GUIDANCE ONLY and NOT FOR VALUATION purposes.

Strutt & Parker Kensington

103 Kensington Church Street, London W8 7LN
020 7938 3666 | kensington@struttandparker.com



@struttandparker struttandparker.com

IMPORTANT NOTICE: Strutt & Parker gives notice that: 1. These particulars do not constitute an offer or contract or part thereof. 2. All descriptions, photographs and plans are for guidance only and should not be relied upon as statements or representations of fact. All measurements are approximate and not necessarily to scale. Any prospective purchaser must satisfy themselves of the correctness of the information within the particulars by inspection or otherwise. 3. Strutt & Parker does not have any authority to give any representations or warranties whatsoever in relation to this property (including but not limited to planning/building regulations), nor can it enter into any contract on behalf of the Vendor. 4. Strutt & Parker does not accept responsibility for any expenses incurred by prospective purchasers in inspecting properties which have been sold, let or withdrawn. 5. We are able to refer you to SPF Private Clients Limited ("SPF") for mortgage broking services, and to Alexander James Interiors ("AJI"), an interior design service. Should you decide to use the services of SPF, we will receive a referral fee from them of 25% of the aggregate of the fee paid to them by you for the arrangement of a mortgage and any fee received by them from the product provider. Should you decide to use the services of AJI, we will receive a referral fee of 10% of the net income received by AJI for the services they provide to you. 6. If there is anything of particular importance to you, please contact this office and Strutt & Parker will try to have the information checked for you. Strutt & Parker is a trading style of BNP Paribas Real Estate Advisory & Property Management UK Limited. Internal photographs taken May 2026, externals taken 2023. Particulars prepared May 2026.

Strutt
& Parker

Land and property. Since 1885.