



Ringshill Place

620 Pilgrims Way, Wouldham, Rochester, Kent

**STRUTT
& PARKER**

BNP PARIBAS GROUP

A fine period country house with ornate character features, set in a beautiful Kent Downs position

A magnificent period house with extensive accommodation and a wealth of stunning original details, located in a peaceful setting on the edge of the Kent Downs. The property is set in its own private woodland and lies just outside the small village of Wouldham, with beautiful gardens and views across the surrounding landscape.



4 RECEPTION ROOMS



6 BEDROOMS



2 BATHROOMS



OUTSIDE PARKING



ABOUT 10.3 ACRES



FREEHOLD



RURAL/VILLAGE



5,751 SQ FT



GUIDE PRICE £1.6M



The property

Ringshill Place is a Victorian country house, offering more than 5,500 square feet of elegant, traditional accommodation with various beautiful period details. The ground floor offers four airy, well-proportioned reception rooms, including the dual aspect family room with its tall south and west-facing sash windows, and ornately patterned ceiling with a chandelier light fitting. The living/sitting room offers similar regal styling, with a large bay window, panelled walls and a tiled fireplace with an ornate carved wooden surround. Additionally, the formal dining room has intricately patterned ceiling plasterwork and cornicing, as well as a handsome fireplace, offering space for a large dining table, making it an ideal space for entertaining.

Also on the ground floor, there is a snug/study and a large kitchen and breakfast room with sliding glass doors welcoming plenty of natural light and opening onto the garden. The kitchen has fitted units, an Aga and space for a breakfast table, with the ground floor also featuring two utility rooms and a laundry, making plenty of space for home appliances and storage.

Stairs also lead to the cellar, where there is a wine store, a boiler room and further storage space.

Upstairs there are six double bedrooms, including a generous principal bedroom. Four of the bedrooms have their own washbasins, providing the potential for adding en suite bath or shower rooms if required. Two bedrooms share a Jack and Jill bathroom, which is an antique art deco suite, the same suite has featured in a few TV programmes, Kirtsy Allsop searched for one when restoring her big house and it's also just appeared in 'teal' colour on Welsh Chapel Dream with Keith Brymer Jones. The first floor also has a large family bathroom with a bathtub and a separate shower unit.

Outside

At the entrance to the property, a private driveway leads through woodland to the parking area in front of the house, where there is plenty of space for several vehicles and access to the detached cart lodge. The extensive garden includes rolling lawns, split-level



terracing and patio areas for al fresco dining.

The front lawn is cultivated to be a meadow and fruit trees with mown paths and seating spots - as you would find in many National Trust houses - to encourage the abundance of wildflowers and wild life. The lawn is currently a carpet of cowslips, in summer we have rare wild orchids (Pyramidal, Man and Bee) dotted amongst the fruit trees and other wildflowers/grasses. We also have sweeping banks of snowdrops, bluebells, etc its a wild curated natural garden.

The grounds are enclosed by woodland, with peaceful meadows and shaded areas providing private spaces for quiet contemplation.

About 10.3 acres

Location

The property is set on the lower slopes, in a rural setting not far from the Medway village of Wouldham, where there are local facilities including a primary school, two pubs, an excellent indian restaurant.

In Peters village which is the large new village in the

Wouldham Parish there is a parade of shops including small supermarket/dentist/takeaways and the excellent primary school.

The historic city of Rochester is to the north, with a full selection of shops, leisure and educational amenities, together with the magnificent backdrop of the Norman castle and cathedral. There are good schools in Rochester, including grammar schools and the independent King's School Rochester. The station in Rochester provides services to London St Pancras, Cannon Street, Victoria and London Bridge; the high-speed service to St Pancras has journey times from 36 minutes.

There are excellent road links with the M2 (Junctions 2 and 3) giving access to the motorway network and also providing links with the Bluewater shopping centre and Ebbsfleet International station.



Distances

- Wouldham 1.0 miles
- Halling 2.5 miles
- Snodland 2.7 miles
- Rochester 4.4 miles
- Maidstone 6.5 miles

Nearby Stations

- Rochester
- Chatham
- Halling
- Snodland

Nearby Schools

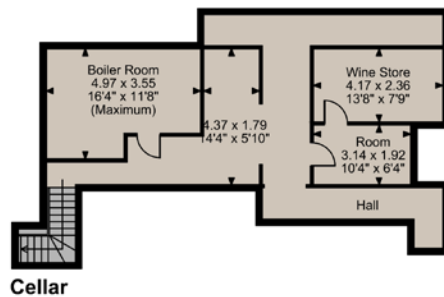
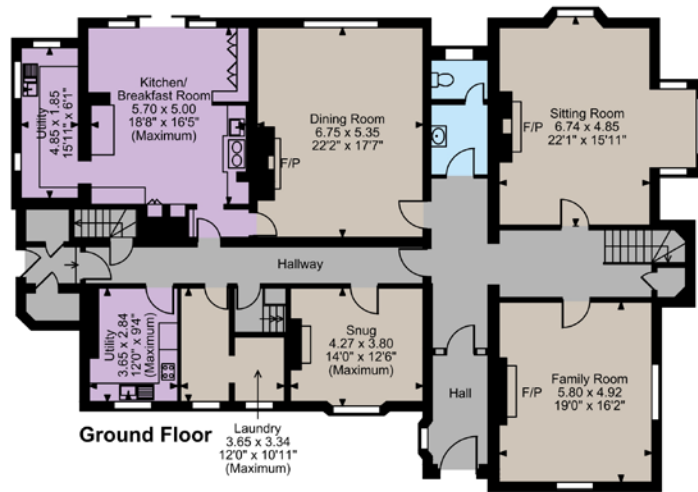
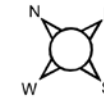
- King's & St Andrews School - Private
- Rochester Girls Grammar School
- Maths School - Boys Grammar
- Wouldham All Saints Primary School

Key Locations

- Rochester Castle
- Guildhall Museum
- Upnor Castle

- Chatham Historic Dockyard
- Leeds Castle
- Ightham Mote
- Knole House
- Chartwell





The position & size of doors, windows, appliances and other features are approximate only.
 © ehouse. Unauthorised reproduction prohibited. Drawing ref. dig/8639755/TWO

Floorplans

House internal area 5,751 sq ft (534 sq m)
 For identification purposes only.

Directions

ME1 3RB
 what3words: ///repair.noise.assets

General

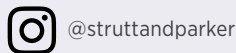
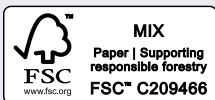
Local Authority: Tonbridge & Malling
 Services: Mains electricity, water. No gas, Private drainage, installed before 1983
 Mobile and Broadband checker: Information can be found here <https://checker.ofcom.org.uk/en-gb/>
 Council Tax: Band H
 EPC Rating: X

Sevenoaks

15 Bank Street, Sevenoaks, Kent TN13 1UW

01732 459900

sevenoaks@struttandparker.com
 struttandparker.com



Over 50 offices across England and Scotland,
 including Prime Central London

For the finer things in property.



IMPORTANT NOTICE: Strutt & Parker gives notice that: 1. These particulars do not constitute an offer or contract or part thereof. 2. All descriptions, photographs and plans are for guidance only and should not be relied upon as statements or representations of fact. All measurements are approximate and not necessarily to scale. Any prospective purchaser must satisfy themselves of the correctness of the information within the particulars by inspection or otherwise. 3. Strutt & Parker does not have any authority to give any representations or warranties whatsoever in relation to this property (including but not limited to planning/building regulations), nor can it enter into any contract on behalf of the Vendor. 4. Strutt & Parker does not accept responsibility for any expenses incurred by prospective purchasers in inspecting properties which have been sold, let or withdrawn. 5. We are able to refer you to SPF Private Clients Limited ("SPF") for mortgage broking services, and to Alexander James Interiors ("AJI"), an interior design service. Should you decide to use the services of SPF, we will receive a referral fee from them of 25% of the aggregate of the fee paid to them by you for the arrangement of a mortgage and any fee received by them from the product provider. Should you decide to use the services of AJI, we will receive a referral fee of 10% of the net income received by AJI for the services they provide to you. 6. If there is anything of particular importance to you, please contact this office and Strutt & Parker will try to have the information checked for you. Photographs taken April 2025. Particulars prepared April 2025. Strutt & Parker is a trading style of BNP Paribas Real Estate Advisory & Property Management UK Limited