



The Garden House

Polruan-by-Fowey
Cornwall

A fine clifftop property sensationally positioned at the mouth of the River Fowey, enjoying breathtaking views and direct access to the beach

The Garden House, Polruan-by-Fowey, PL23 1PW
Fowey: 0.5 miles (via pedestrian ferry), Plymouth: 35 miles

Features:

Hall | Drawing room/dining room | Kitchen/breakfast room | Family room | Bar | Walk-in larder | Wine cellar | Gym | Boot Room | Principal bedroom with dressing room and ensuite bathroom | 4 Further bedrooms (One bedroom is currently set up as a spacious office, suitable for WFH) | Family bathroom

Double garage | Summer house | Greenhouse | Mature terraced gardens leading to a beach gate with stone steps to the beach

About 1.04 acres in all





The property

The Garden House is a charming period property with a wealth of original character details, set in a stunning elevated position in the village of Polruan, overlooking the mouth of the River Fowey, with magnificent views out to sea. The property features beautiful, sprawling gardens, which run all the way to the waterside, providing direct access to the estuary for sailing and other watersports.

The house, which has been in the same ownership for 30 years, provides almost 4,000 square feet of beautifully presented accommodation, including airy reception rooms with high ceilings, large sash windows and elegant cornering. These include the comfortable family room, with its splendid cast-iron fireplace and bay window offering views across the gardens. A further reception room has a delightful bar making it ideal for entertaining, while the 26ft sitting/dining room is another impressive reception space with a dual aspect, stripped wooden flooring, a fireplace fitted with a logburner and space for both a seating area and a family dining table.

Across the back of the ground floor, the kitchen and breakfast room offers bespoke fitted English Oak units, a central island, a split butler sink and a 4-oven Aga, as well as skylights welcoming plenty of natural light. There is also a wine cellar, walk-in larder and a laundry, providing additional space for home storage and appliances.

The first floor provides three double bedrooms, one of which could be used as an office. The principal bedroom has a large panoramic bay window, offering stunning views across the water, as well as a dressing room and en suite bathroom. The first floor also has a home gym and a family bathroom with a luxury freestanding bateau bathtub and a walk-in shower. On the second floor you will find a further two bedrooms, both of which have access to eaves storage space.

Outside

The property is situated on the peaceful Battery Lane, with off-road secure parking for three vehicles in the double garage and adjacent platform. There is an entrance into the first-floor gym at the rear of the house while the main entrance is at the front, facing the harbour. The gardens at the front are west-facing and enjoy a magnificent elevated position overlooking the River Fowey estuary, with views out to sea. There are terraced areas at the sides, as well as a greenhouse and a summer house, while beyond, the gardens drop away to reveal terraced lawns, peaceful meadows and wooded areas, as well as a badminton court or croquet lawn. The gardens lead right to the point, where there are stone steps providing access to the beach and water's edge.

Location

Set in an Area of Outstanding Natural Beauty, Polruan-by-Fowey lies on the east bank of the River Fowey, just inside the entrance to Fowey harbour. The village has its own thriving primary school, general store, sub-post office, tearooms, two public houses and a long-established boat building and repair yard. Polruan's quay is a short walk from the property, from which leaves the regular passenger ferry to Fowey, where there is a wider range of shops and businesses generally. Fowey harbour is particularly well-known as a popular sailing centre and provides a safe anchorage for craft of all sizes. This very beautiful part of South Cornwall provides some wonderful coastal and inland footpaths, many of which are in the ownership of the National Trust. Once away from the immediate local lanes, there are good road links via the A390 and A38/A30 to the motorway system. Mainline railway connections to London Paddington can be made from a number of local stations.













Directions

What3Words: [///hologram.treatment.doors](https://www.what3words.com/#!/hologram.treatment.doors)

General

Tenure: Freehold

Local Authority: Cornwall Council

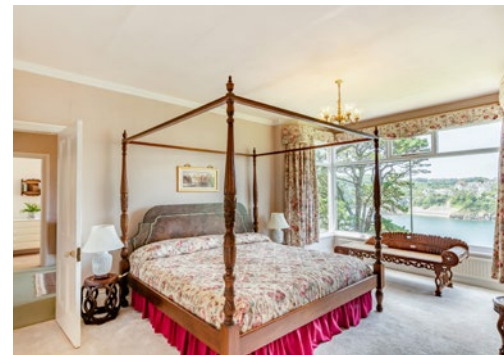
Services: Mains water and electricity, oil-fired central heating, private drainage. We understand that the private drainage at this property may not comply with the relevant regulations. Further information is being sought.

Council Tax: Band G

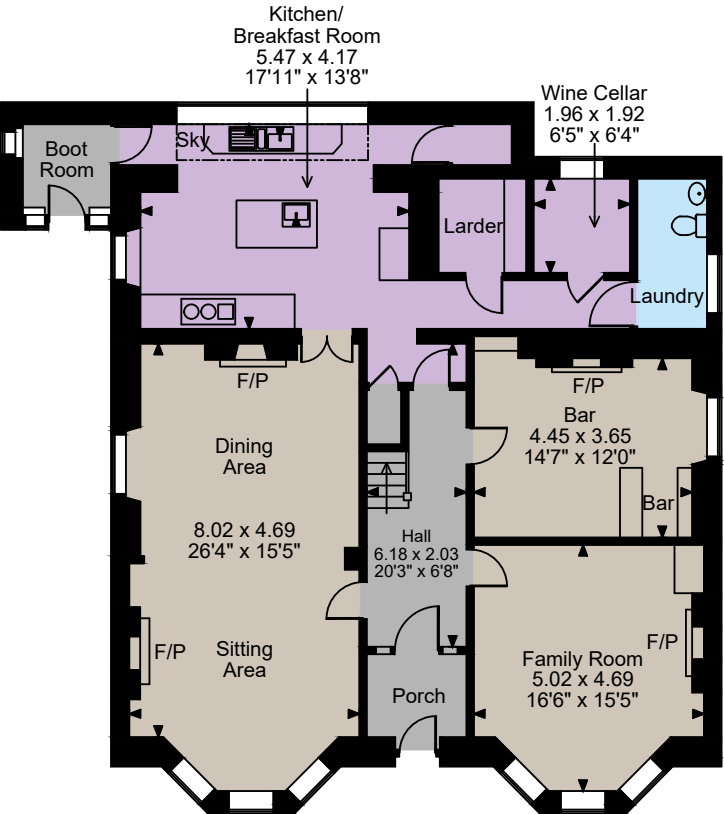
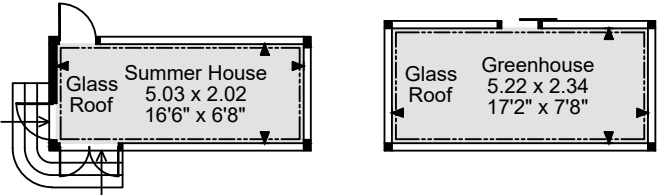
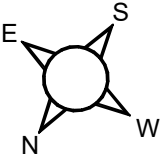
EPC Rating: E

Wayleaves and easements: The property is sold subject to any wayleaves or easements, whether mentioned in these particulars or not.

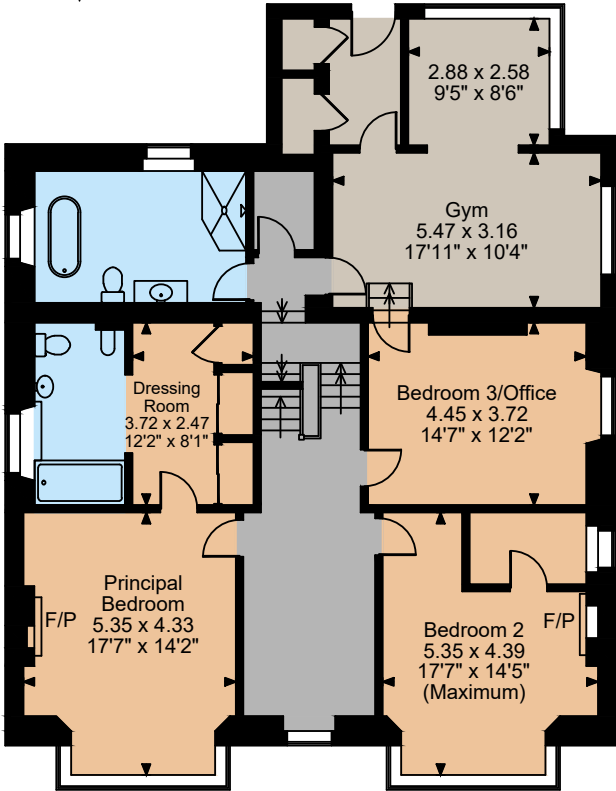
Guide Price: £3,400,000



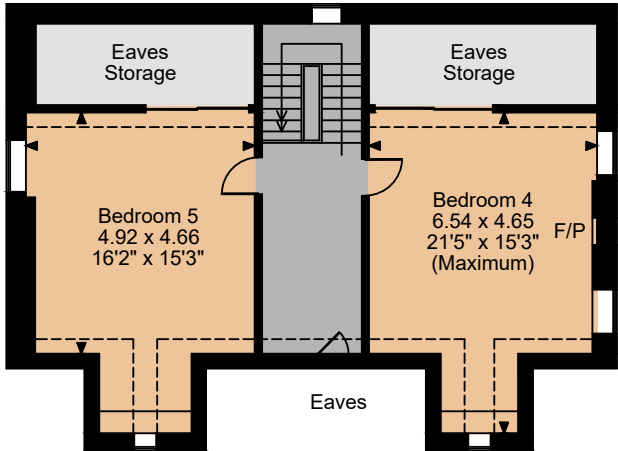
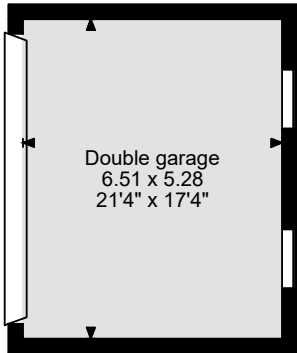
The Garden House, Polruan-by-Fowey
 Main House internal area 3,835 sq ft (356 sq m)
 Garage internal area 370 sq ft (34 sq m)
 Outbuildings internal area 240 sq ft (22 sq m)
 Total internal area 4,445 sq ft (413 sq m)



Ground Floor



First Floor



Second Floor

The position & size of doors, windows, appliances and other features are approximate only.
 □□□□ Denotes restricted head height
 © ehouse. Unauthorised reproduction prohibited. Drawing ref. dig/8653379/DBN

Strutt & Parker London
43 Cadogan St, London SW3 2PR

+44 (0) 20 7591 2213
london@struttandparker.com
struttandparker.com

Strutt & Parker Cornwall
Exeter, 24 Southernhay West, EX1 1PR

+44 1872 301 664
cornwall@struttandparker.com
struttandparker.com

Over 50 offices across England
and Scotland, including Prime
Central London

May Whetter & Grose
Estuary House, 23 Fore St, Fowey, PL23 1AH

01726 832 299
jane@maywetter.co.uk
maywetter.co.uk

IMPORTANT NOTICE: Strutt & Parker gives notice that: 1. These particulars do not constitute an offer or contract or part thereof. 2. All descriptions, photographs and plans are for guidance only and should not be relied upon as statements or representations of fact. All measurements are approximate and not necessarily to scale. Any prospective purchaser must satisfy themselves of the correctness of the information within the particulars by inspection or otherwise. 3. Strutt & Parker does not have any authority to give any representations or warranties whatsoever in relation to this property (including but not limited to planning/building regulations), nor can it enter into any contract on behalf of the Vendor. 4. Strutt & Parker does not accept responsibility for any expenses incurred by prospective purchasers in inspecting properties which have been sold, let or withdrawn. 5. We are able to refer you to SPF Private Clients Limited ("SPF") for mortgage broking services, and to Alexander James Interiors ("AJI"), an interior design service. Should you decide to use the services of SPF, we will receive a referral fee from them of 25% of the aggregate of the fee paid to them by you for the arrangement of a mortgage and any fee received by them from the product provider. Should you decide to use the services of AJI, we will receive a referral fee of 10% of the net income received by AJI for the services they provide to you. 6. If there is anything of particular importance to you, please contact this office and Strutt & Parker will try to have the information checked for you. Photographs taken April 2025. Particulars prepared June 2025. Strutt & Parker is a trading style of BNP Paribas Real Estate Advisory & Property Management UK Limited





STRUTT & PARKER

