

61 Pont Street,
Chelsea



Strutt
& Parker

Land and property. Since 1885.

A superb 3rd floor apartment in a handsome building on Pont Street.

A handsome, red brick building with a grand entrance and spectacular staircase.

Laterally arranged with a fabulous semi open-plan reception and kitchen/dining room, this immaculate apartment has two well-proportioned bedrooms with en-suite bathrooms and a formal entrance hall/study with guest cloakroom.

The reception room has a central fireplace with far-reaching views up to Brompton Road and Sloane Street. Light and bright, the living spaces are optimal with open plan kitchen/ dining room that can be dissected if needed with pocket-doors.

The two-bedroom suites are nicely separated from the living spaces and nearly equal, the principal being slightly larger with a walk-in wardrobe, but both with excellent storage.



Location

Pont Street runs east-west through the heart of Knightsbridge, with boutique shops, restaurants, and cafes right on its doorstep.

Residents can enjoy convenient access to renowned shopping destinations like Harrods, Harvey Nichols and all the luxury boutiques and designer brands on Sloane Street and Brompton Road.

Knightsbridge underground station (Piccadilly line) is 0.3 miles away and there is easy access to the M3 and M4 corridors, and Heathrow Airport.

This apartment is ideally placed for the Victoria & Albert Museum, and the 630 acres of beautifully landscaped parks of Kensington Gardens and Hyde Park.

Postcode region: SW1X

General

EPC Rating: D

Local Authority: Royal Borough of Kensington and Chelsea.

Council Tax band: G

Ground Rent: 'Peppercorn'

Service Charge: Approximately £1,158 per quarter; 7.5% of total building expenditure per annum.

Mobile and Broadband checker: Information can be found here <https://checker.ofcom.org.uk/en-gb/>

1,297 Sq Ft (120.5 Sq m)

1 to 2 reception rooms

2 bedrooms

2 bathrooms

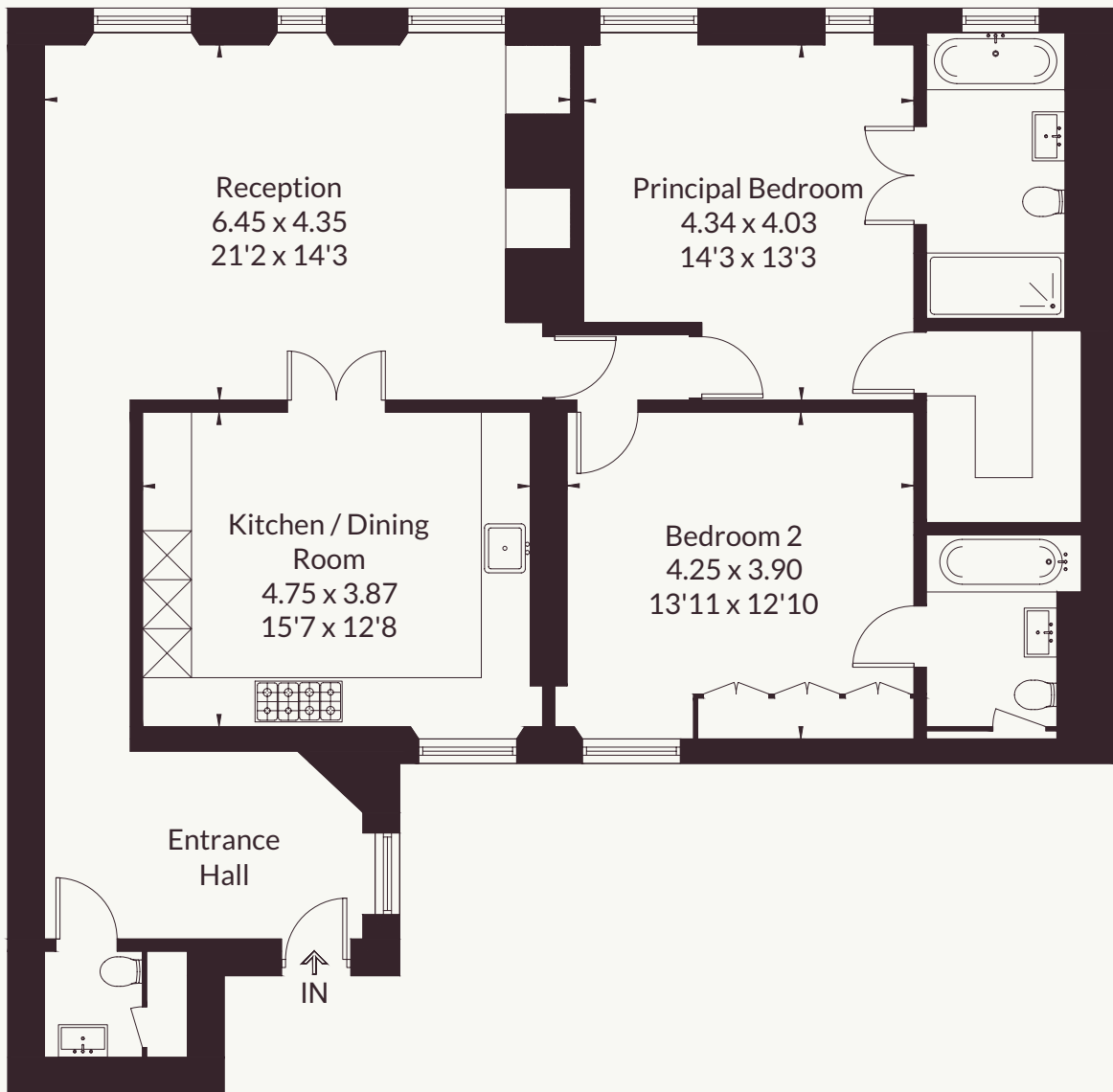
Third floor

Residents parking

Asking Price £2,100,000



Approximate Floor Area = 120.5 sq m / 1297 sq ft



Third Floor

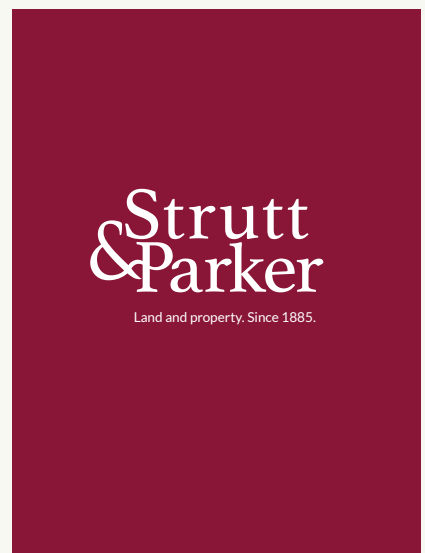
This floor plan has been drawn in accordance with RICS Property Measurement 2nd edition. All measurements, including the floor area, are approximate and for illustrative purposes only. @fourwalls-group.com #109629

Strutt & Parker Chelsea

43 Cadogan Street, London, SW3 2PR
02036214788 | chelsea@struttandparker.com



@struttandparker struttandparker.com



IMPORTANT NOTICE: Strutt & Parker gives notice that: 1. These particulars do not constitute an offer or contract or part thereof. 2. All descriptions, photographs and plans are for guidance only and should not be relied upon as statements or representations of fact. All measurements are approximate and not necessarily to scale. Any prospective purchaser must satisfy themselves of the correctness of the information within the particulars by inspection or otherwise. 3. Strutt & Parker does not have any authority to give any representations or warranties whatsoever in relation to this property (including but not limited to planning/building regulations), nor can it enter into any contract on behalf of the Vendor. 4. Strutt & Parker does not accept responsibility for any expenses incurred by prospective purchasers in inspecting properties which have been sold, let or withdrawn. 5. We are able to refer you to SPF Private Clients Limited ("SPF") for mortgage broking services, and to Alexander James Interiors ("AJI"), an interior design service. Should you decide to use the services of SPF, we will receive a referral fee from them of 25% of the aggregate of the fee paid to them by you for the arrangement of a mortgage and any fee received by them from the product provider. Should you decide to use the services of AJI, we will receive a referral fee of 10% of the net income received by AJI for the services they provide to you. 6. If there is anything of particular importance to you, please contact this office and Strutt & Parker will try to have the information checked for you. Strutt & Parker is a trading style of BNP Paribas Real Estate Advisory & Property Management UK Limited. Template by Fourwalls. Photographs taken May 2026. Particulars prepared June 2026.