

# Portobello Road

Notting Hill, W11





## A unique three bedroom freehold house in this iconic Notting Hill location.

Far removed from the ordinary, this very special, end of terrace property is laid out over four floors and has a wonderful west facing roof terrace.



**2 RECEPTION ROOMS**



**3 BEDROOMS**



**3 BATHROOMS**



**FREEHOLD**



**3,501 SQ FT**



**GUIDE PRICE  
£4,500,000**



### The property

This vibrant lateral home is a stylish blend of period charm and contemporary living, complete with spiral, fibreglass staircase painted in kaleidoscopic shades, designed by AB Rogers.

Originally interior designed by Carolin Larsberg, this remarkable house has outstanding, open plan entertaining space benefiting from an abundance of natural light with ten large sash windows on the first floor alone.

The entire second floor is devoted to the principal bedroom suite, where the skylights and triple-aspect windows flood the space with natural light. Floor-to-ceiling mirrored wardrobes amplify the brightness and sense of openness. For an unconventional route back to the reception room below, simply lift the trapdoor and take the slide down.

On the lower ground floor, a flexible area serves either as entertaining space or extra guest accommodation. A cosy enclosed room at the rear offers further space for sleeping or dining.

### Location

Portobello Road is a world renowned address which runs through the heart of Notting Hill and offers close proximity to all the amenities of the local area. There is an excellent, local selection of boutique shops, cafes and restaurants, as well as nearby access to London Underground transport links at Ladbroke Grove (Circle and Hammersmith & City Lines) and Notting Hill Gate (Circle, Central and District Lines).

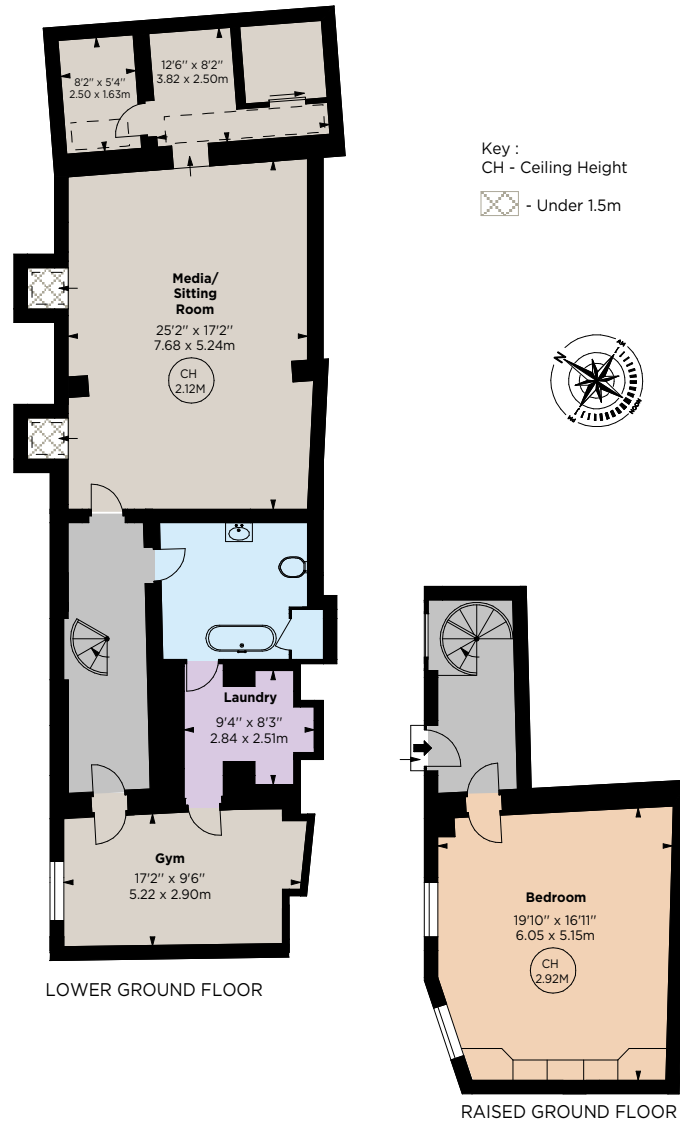












## Floorplans

Gross internal area 3,501 sq ft (325.25 sq m)

For identification purposes only.

## General

Tenure: Freehold

Local Authority: Royal Borough of Kensington and Chelsea

Council Tax: Band G

EPC Rating: E

Parking: RBKC Resident's permit

Broadband: Available

Josh Ratcliffe

48-50 Kensington Church Street, London, W8 4DG

020 4613 0888

07361 876 680

jr@sothebysrealty.co.uk

sothebysrealty.co.uk

United Kingdom | Sotheby's  
INTERNATIONAL REALTY

Miles Meacock

303 Westbourne Grove, London, W11 2QA

020 7221 1111

07967 039 612

miles.meacock@struttandparker.com

struttandparker.com

### IMPORTANT NOTICE

Strutt & Parker and Sotheby's for themselves and for the Vendors of this property, whose agents they are, give notice that: 1. The particulars are intended to give a fair and substantially correct overall description for the guidance of intending purchasers and do not constitute part of an offer or contract. Prospective purchasers and lessees ought to seek their own professional advice. 2. All descriptions, dimensions, areas, reference to condition and necessary permissions for use and occupation and other details are given in good faith, and are believed to be correct, but any intending purchasers should not rely on them as statements or representations of fact, but must satisfy themselves by inspection or otherwise as to the correctness of each of them. 3. No person in the employment of Strutt & Parker or Sotheby's has any authority to make or give any representations or warranty whatever in relation to this property on behalf of Strutt & Parker or Sotheby's, nor enter into any contract on behalf of the Vendor. 4. No responsibility can be accepted for any expenses incurred by intending purchasers in inspecting properties which have been sold, let or withdrawn. Photographs taken November 2025. Particulars prepared November 2025. MEASUREMENTS AND OTHER INFORMATION All measurements are approximate. While we endeavour to make our sales particulars accurate and reliable, if there is any point which is of particular importance to you, please contact either office and we will be pleased to check the information for you, particularly if contemplating travelling some distance to view the property. Strutt & Parker is a trading style of BNP Paribas Real Estate Advisory & Property Management UK Limited.

**STRUTT & PARKER**  
BNP PARIBAS GROUP