



Pottery Lane, Notting Hill, W11

For the finer things in property.

**STRUTT
& PARKER**

BNP PARIBAS GROUP

Pottery Lane, Notting Hill, W11

An impressive three/four bedroom house located on this popular Holland Park address.

Arranged over three floors this beautiful house has a wide lateral foot print and excellent natural light throughout.

The house offers an abundance of entertaining space with a 24ft drawing room, 25ft kitchen/dining room. There are three spacious bedrooms, with a separate media room/fourth bedroom.

Pottery Lane is a quiet and attractive address, moments from popular Clarendon Cross, and benefits from the wonderful restaurants, shopping and transport facilities of Notting Hill, Holland Park and Westfield Shopping Centre. The open spaces of Holland Park and Avondale Park are nearby.

Entrance hall | Reception room | Kitchen/dining room | Three bedrooms | Media room/fourth bedroom | Bathroom | Two shower rooms
EPC rating D

Terms

Tenure: Freehold

Council Tax: Band G

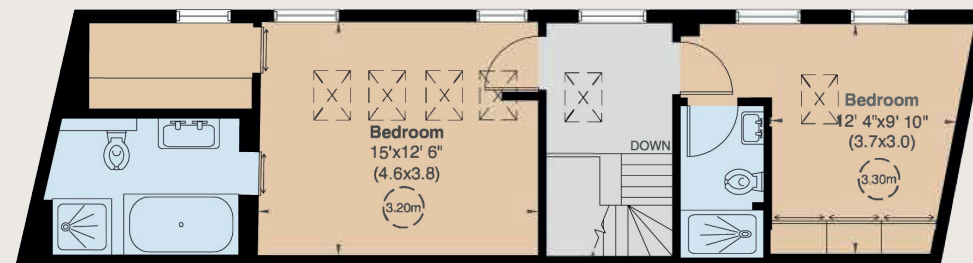
Local Authority: The Royal Borough of Kensington and Chelsea

Asking Price: £2,395,000

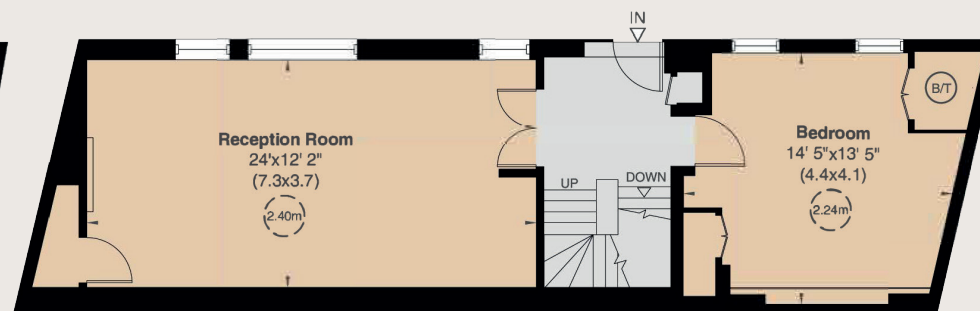




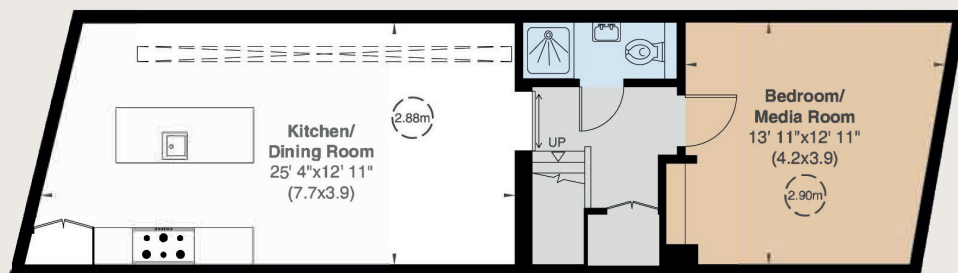
Approximate gross internal area 1,804 sq ft (168 sq m)
For identification purposes only.



First Floor



Ground Floor



Basement

Notting Hill

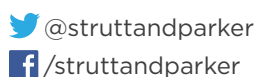
303 Westbourne Grove, London, W11 2QA

020 7221 1111

nottinghill@struttandparker.com

IMPORTANT NOTICE

Strutt & Parker gives notice that: 1. These particulars do not constitute an offer or contract or part thereof. 2. All descriptions, photographs and plans are for guidance only and should not be relied upon as statements or representations of fact. All measurements are approximate and not necessarily to scale. Any prospective purchaser must satisfy themselves of the correctness of the information within the particulars by inspection or otherwise. 3. Strutt & Parker does not have any authority to give any representations or warranties whatsoever in relation to this property (including but not limited to planning/building regulations), nor can it enter into any contract on behalf of the Vendor. 4. Strutt & Parker does not accept responsibility for any expenses incurred by prospective purchasers in inspecting properties which have been sold, let or withdrawn. 5. We are able to refer you to SPF Private Clients Limited ("SPF") for mortgage broking services, and to Alexander James Interiors ("AJI"), an interior design service. Should you decide to use the services of SPF, we will receive a referral fee from them of 25% of the aggregate of the fee paid to them by you for the arrangement of a mortgage and any fee received by them from the product provider. Should you decide to use the services of AJI, we will receive a referral fee of 10% of the net income received by AJI for the services they provide to you. 6. If there is anything of particular importance to you, please contact this office and Strutt & Parker will try to have the information checked for you. Photographs taken October 2022. Particulars prepared October 2022 Strutt & Parker is a trading style of BNP Paribas Real Estate Advisory & Property Management UK Limited.



Over 45 offices across England and Scotland,
including Prime Central London

For the finer things in property.

