

# Primrose Mansions

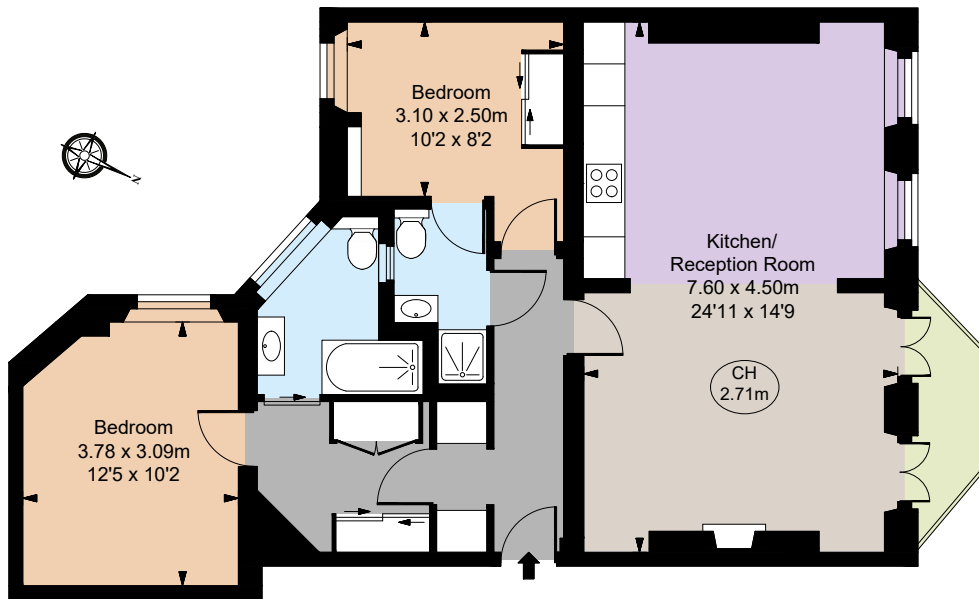
Prince of Wales Drive, SW11



**STRUTT  
& PARKER**

BNP PARIBAS GROUP





Second Floor



## A beautifully presented two-bedroom, two-bathroom lateral flat overlooking Battersea Park.

A rather impressive large lateral flat positioned on the second floor, set within an attractive mansion block. This well-presented home is beautifully proportioned, providing excellent living space and leafy views across Battersea Park.

This wonderful home provides two bedrooms, a family bathroom, an en-suite shower room and bright open-plan kitchen reception with a separate dining, sitting area, and balcony.

Primrose Mansions is positioned on Prince of Wales Drive, a popular location within a thirty second walk from Battersea Park. There are various transport links nearby with Battersea Park, Queenstown Road and Clapham Junction stations all within walking distance.

### Floorplans

**Gross internal area 822 sq ft (76.40 sq m)**  
For identification purposes only.

### General

**Tenure:** Share of Freehold

**Local Authority:** London Borough of Wandsworth

**Service Charge:** £6,400 pa

**Ground Rent:** N/A

**Council Tax:** Band E

**EPC Rating:** C

**Parking:** Available

**Broadband:** Available

**Asking Price:** £950,000

## Chelsea SW10

140 Fulham Road, London, SW10 9PY

**020 7373 1010**

chelseaSW10@struttandparker.com

struttandparker.com

**IMPORTANT NOTICE:** Strutt & Parker gives notice that: 1. These particulars do not constitute an offer or contract or part thereof. 2. All descriptions, photographs and plans are for guidance only and should not be relied upon as statements or representations of fact. All measurements are approximate and not necessarily to scale. Any prospective purchaser must satisfy themselves of the correctness of the information within the particulars by inspection or otherwise. 3. Strutt & Parker does not have any authority to give any representations or warranties whatsoever in relation to this property (including but not limited to planning/building regulations), nor can it enter into any contract on behalf of the Vendor. 4. Strutt & Parker does not accept responsibility for any expenses incurred by prospective purchasers in inspecting properties which have been sold, let or withdrawn. 5. We are able to refer you to SPF Private Clients Limited ("SPF") for mortgage broking services, and to Alexander James Interiors ("AJI"), an interior design service. Should you decide to use the services of SPF, we will receive a referral fee from them of 25% of the aggregate of the fee paid to them by you for the arrangement of a mortgage and any fee received by them from the product provider. Should you decide to use the services of AJI, we will receive a referral fee of 10% of the net income received by AJI for the services they provide to you. 6. If there is anything of particular importance to you, please contact this office and Strutt & Parker will try to have the information checked for you. Photographs taken May 2025. Particulars prepared May 2025. Strutt & Parker is a trading style of BNP Paribas Real Estate Advisory & Property Management UK Limited



@struttandparker

Over 50 offices across England and Scotland,  
including Prime Central London

For the finer things in property.

