

Quarrendon Street,
Parsons Green



Strutt
& Parker

Land and property. Since 1885.

An immaculately presented and exceptionally wide 5-bedroom Lion House in the heart of Parsons Green.

This beautifully presented 5-bedroom Lion House in the highly sought after Peterborough Estate effortlessly blends contemporary modern living and period charm. Set out across four floors, the house strikes a wonderful balance of adaptable living and entertaining spaces, with the open plan layout creating an enormous sense of space throughout, only enhanced further by the high ceilings and extra width to the house. The current owners have refurbished the house to an exceptionally high standard and have fitted the house with air conditioning and underfloor heating on each level, SONOS, with sensor lighting in all bathrooms and on the stairs.

On entering the ground floor, a front formal reception room flows seamlessly into a kitchen that has been beautifully designed by Neatsmith, complete with Siemens appliances, sleek Corian worktops and an innovative floor-fitted extractor which negates the need for an overhead hood.

The lower ground floor is an impressive space, featuring 3-metre ceiling heights, currently laid out as a home cinema, fitted with a 4K Sony projector and a wine cellar that can house 300 bottles. A guest bathroom can also be found at this level along with a utility room that doubles up as a kitchenette, providing flexibility should any future owner require guest or staff accommodation. Also on this level is a spacious double bedroom with built-in wardrobes and an en-suite bathroom.

A generous main bedroom can be found on the first floor, enjoying 2.84m ceiling heights and flooded with natural light, it offers plenty of built in storage and a dressing room that leads to an en-suite bathroom that can effortlessly be split into a guest bathroom for the benefit of the rear bedroom.



The second floor offers well-balanced accommodation with two excellent double bedrooms and a family bathroom all of which are found off a central reception room which is ideal for family living.

Full length sliding doors provide immediate access to a private garden featuring continuous stone tiling from the kitchen to the garden only adding further to the clean, contemporary aesthetic.

Location

Quarrendon Street is one of the principal roads that make up the Peterborough Estate, an area of roads made up of 'Lion Houses' as built by J Nichols in the 1890's. The house benefits from the shopping and transport facilities of the local area including the New Kings Road and Parsons Green. Fulham Broadway is within striking distance, as are the open spaces of Eel Brook Common.

Postcode region: SW6

General

Local Authority: London Borough of Hammersmith and Fulham
Council Tax: Band G
EPC Rating: C
Parking: On street parking available
Mobile coverage and broadband: Information can be found here: <https://checker.ofcom.org.uk/en-gb/mobile-coverage>

3,812 sq ft (354.2 sq m)

5 bedrooms

4 bathrooms

Air conditioning

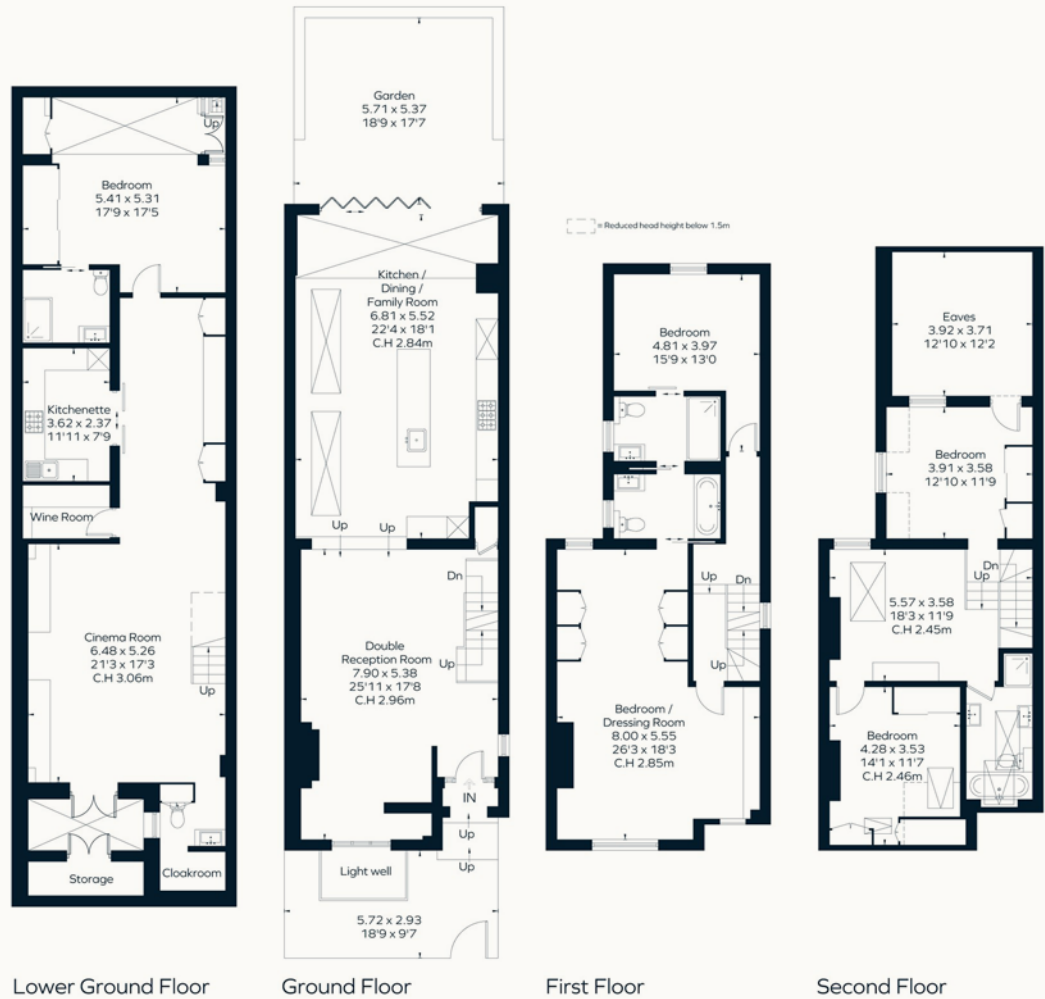
Private garden

Freehold

Guide price £4,800,000



Approximate Floor Area = 354.2 sq m / 3812 sq ft



Lower Ground Floor

Ground Floor

First Floor

Second Floor



This floor plan has been drawn in accordance with RICS Property Measurement 2nd edition. All measurements, including the floor area, are approximate and for illustrative purposes only. @fourwalls-group.com #98265

Strutt & Parker Fulham

701 Fulham Road, London, SW6 5UL
020 7731 7100 | Fulham@struttandparker.com



@struttandparker struttandparker.com

**Strutt
& Parker**

Land and property. Since 1885.

IMPORTANT NOTICE: Strutt & Parker gives notice that: 1. These particulars do not constitute an offer or contract or part thereof. 2. All descriptions, photographs and plans are for guidance only and should not be relied upon as statements or representations of fact. All measurements are approximate and not necessarily to scale. Any prospective purchaser must satisfy themselves of the correctness of the information within the particulars by inspection or otherwise. 3. Strutt & Parker does not have any authority to give any representations or warranties whatsoever in relation to this property (including but not limited to planning/building regulations), nor can it enter into any contract on behalf of the Vendor. 4. Strutt & Parker does not accept responsibility for any expenses incurred by prospective purchasers in inspecting properties which have been sold, let or withdrawn. 5. We are able to refer you to SPF Private Clients Limited ("SPF") for mortgage broking services, and to Alexander James Interiors ("AJI"), an interior design service. Should you decide to use the services of SPF, we will receive a referral fee from them of 25% of the aggregate of the fee paid to them by you for the arrangement of a mortgage and any fee received by them from the product provider. Should you decide to use the services of AJI, we will receive a referral fee of 10% of the net income received by AJI for the services they provide to you. 6. If there is anything of particular importance to you, please contact this office and Strutt & Parker will try to have the information checked for you. Strutt & Parker is a trading style of BNP Paribas Real Estate Advisory & Property Management UK Limited. Photographs taken May 2026. Particulars prepared May 2026