

Consort House,
Queen's Gate



Strutt
& Parker

Land and property. Since 1885.

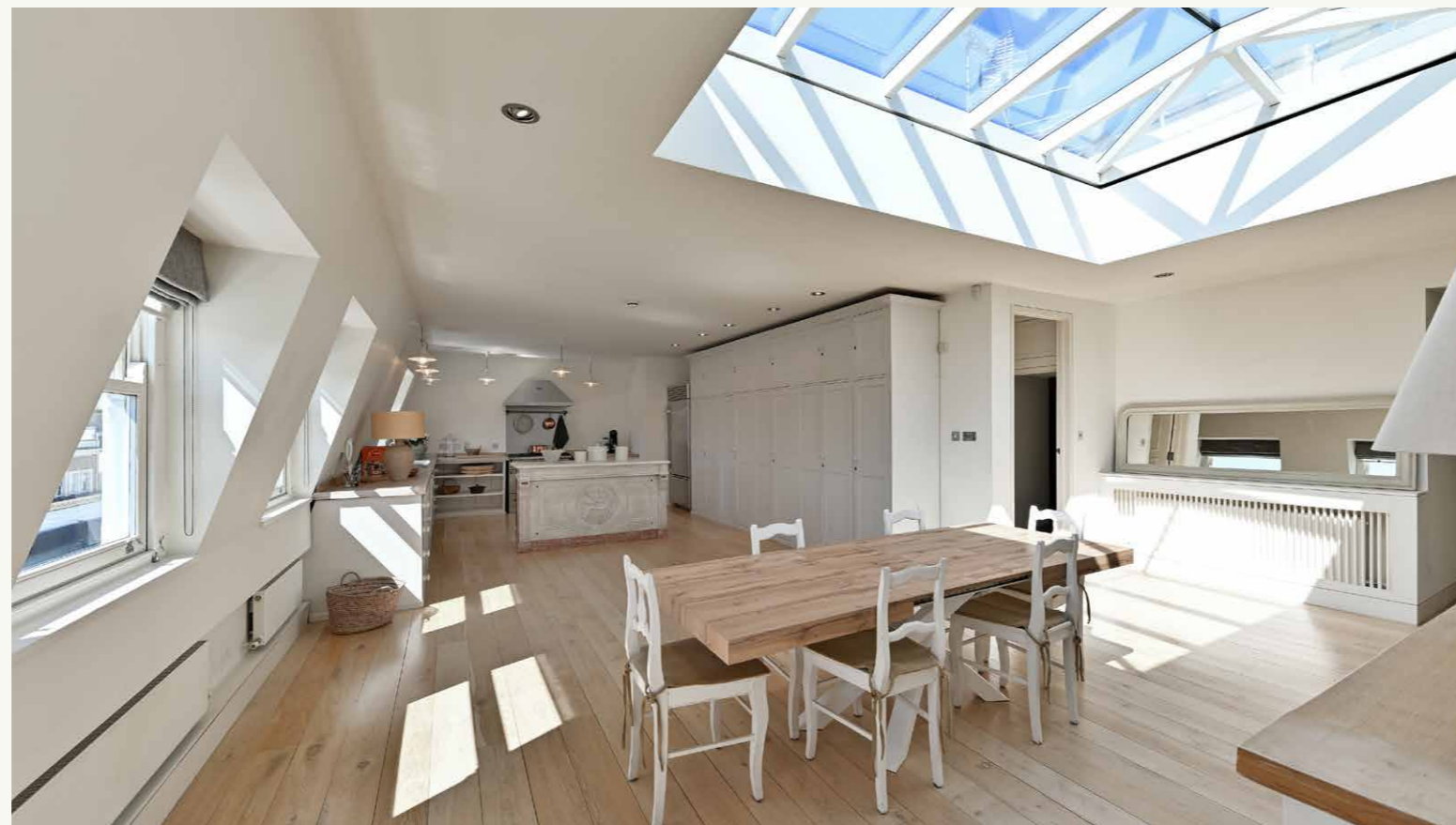
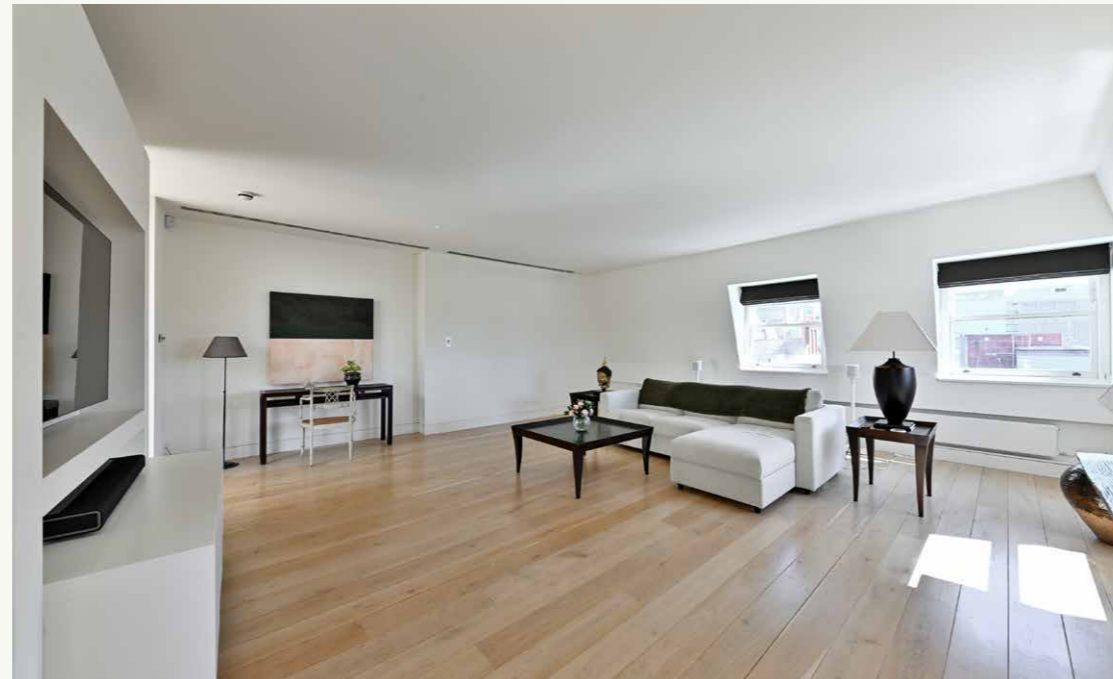
Exceptionally light & spacious penthouse apartment on Queen's Gate

Property description

One of South Kensington's most famous roads, Queen's Gate separates Hyde Park from the Old Brompton Road and is the setting for Consort House, a magnificent Grade II-listed building which benefits from portage and a modern lift. On the fifth floor, this stunning lateral penthouse apartment enjoys a lofty position with far-reaching views. The interiors are immaculately presented, with a neutral finish that presents an elegant blank canvas for personalisation.

The well-planned layout extends to more than 2,700 sq ft, an excellent size for the setting, with the accommodation arranged into distinct areas for relaxing, entertaining and accommodating visiting guests. An inviting hallway leads to a vast open plan kitchen, dining and living room with a range of storage options. The dining area is set below an impressive roof lantern which can be opened to allow a fresh breeze. Sliding pocket doors separate the open plan living space from a further generously proportioned reception room, allowing the rooms to be opened up or closed off to suit.

A long hallway leads to a discreetly positioned principal bedroom, complete with a dressing room and en suite bathroom with freestanding bath. The two further bedrooms are situated by the front door, including an en suite guest bedroom and a further bedroom/study which has the use of a cloakroom/shower room. The property also benefits from a utility room and two additional storage rooms.



Queen's Gate is at the heart of SW7, with South Kensington's garden squares and leafy avenues on the doorstep. At the northern end is Hyde Park, a green oasis with a network of paths cutting through expanses of grass and mature trees. From the apartment's penthouse position there are stunning views across the rooftops of South Kensington, with wide windows drawing in excellent natural light.

Location

Consort House is a Grade II-listed building constructed in the mid-1800s. It offers excellent transport links, with both Gloucester Road and South Kensington stations nearby. The property is within a short distance of the iconic Natural History Museum, the V&A and the green open spaces of Hyde Park. Queen's Gate is an iconic address which is within close proximity to world class shops, schools, bars and restaurants.

Postcode region: SW7

General

Local Authority: The Royal Borough of Kensington and Chelsea
Services: Mains electricity, drainage and water, gas central heating.
Council Tax: Band H
EPC Rating: C
Tenure: Share of freehold (974 years remaining on the underlying lease)
Mobile and Broadband checker: Information can be found here <https://checker.ofcom.org.uk/en-gb/>

2,726 sq ft (253.3 sq m)
Penthouse apartment
Three bedrooms
Portered building
Landmark address
Share of freehold
Residential

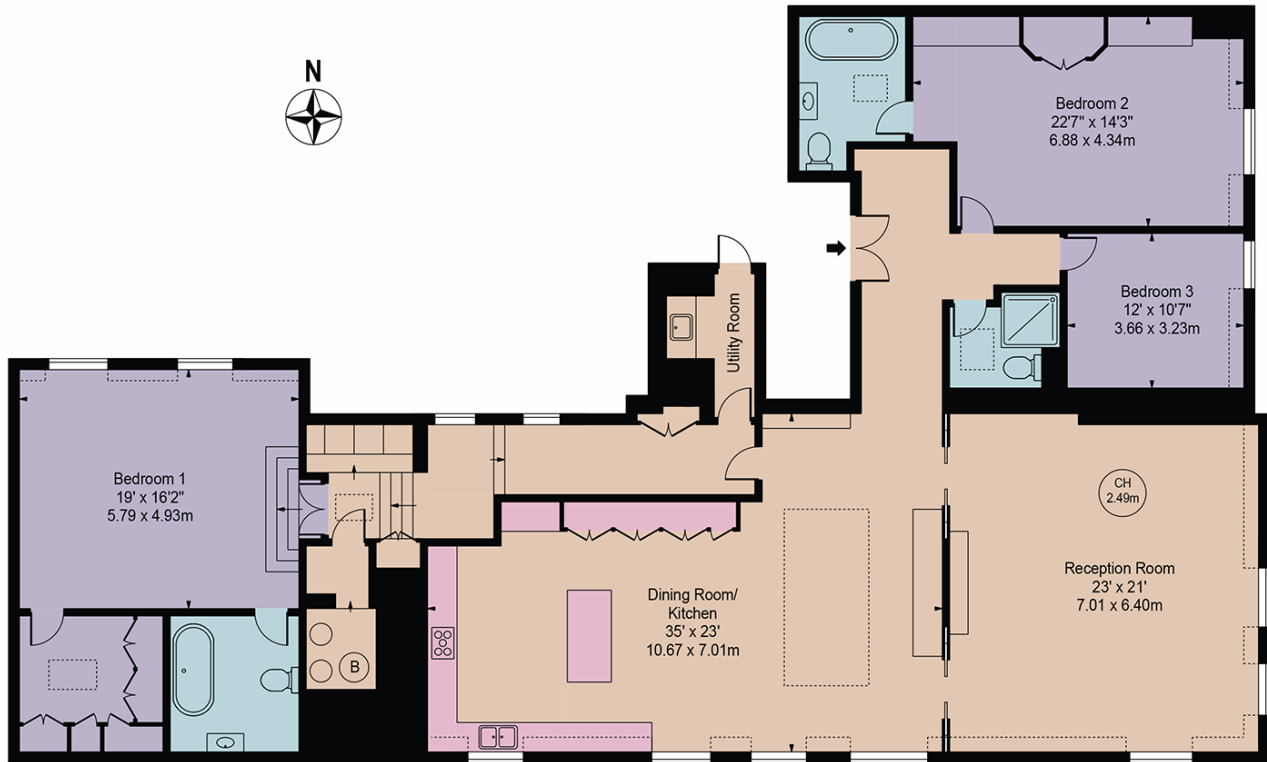
Guide price £3,950,000



Queen's Gate

Approx. Total Internal Area 2770 Sq Ft - 257.34 Sq M
(Including Restricted Height Area)

Approx. Gross Internal Area 2695 Sq Ft - 250.37 Sq M
(Excluding Restricted Height Area)



Fifth Floor

For Illustration Purposes Only - Not To Scale

This floor plan should be used as a general outline for guidance only and does not constitute in whole or in part an offer or contract. Any intending purchaser or lessee should satisfy themselves by inspection, searches, enquiries and full survey as to the correctness of each statement. Any areas, measurements or distances quoted are approximate and should not be used to value a property or be the basis of any sale or let.

Strutt & Parker South Kensington

90 Old Brompton Road, London, SW7 3LQ

020 7581 7000 | southkensington@struttandparker.com



@struttandparker struttandparker.com

IMPORTANT NOTICE: Strutt & Parker gives notice that: 1. These particulars do not constitute an offer or contract or part thereof. 2. All descriptions, photographs and plans are for guidance only and should not be relied upon as statements or representations of fact. All measurements are approximate and not necessarily to scale. Any prospective purchaser must satisfy themselves of the correctness of the information within the particulars by inspection or otherwise. 3. Strutt & Parker does not have any authority to give any representations or warranties whatsoever in relation to this property (including but not limited to planning/building regulations), nor can it enter into any contract on behalf of the Vendor. 4. Strutt & Parker does not accept responsibility for any expenses incurred by prospective purchasers in inspecting properties which have been sold, let or withdrawn. 5. We are able to refer you to SPF Private Clients Limited ("SPF") for mortgage broking services, and to Alexander James Interiors ("AJI"), an interior design service. Should you decide to use the services of SPF, we will receive a referral fee from them of 25% of the aggregate of the fee paid to them by you for the arrangement of a mortgage and any fee received by them from the product provider. Should you decide to use the services of AJI, we will receive a referral fee of 10% of the net income received by AJI for the services they provide to you. 6. If there is anything of particular importance to you, please contact this office and Strutt & Parker will try to have the information checked for you. Strutt & Parker is a trading style of BNP Paribas Real Estate Advisory & Property Management UK Limited. Template by Fourwalls. Photographs taken TBC. Particulars prepared May 2026.

Strutt & Parker

Land and property. Since 1885.