

Queen's Gate Gardens

London, SW7



Spacious two-bedroom apartment overlooking the prestigious Queen's Gate Gardens.

A large and well apportioned apartment situated on the second floor (with lift) benefiting from garden views, exceptional ceiling height, and large luminous windows throughout.



1 RECEPTION ROOM



2 BEDROOMS



2 BATHROOMS



LEASEHOLD



1,091 SQ FT



**GUIDE PRICE
£1,425,000**



The property

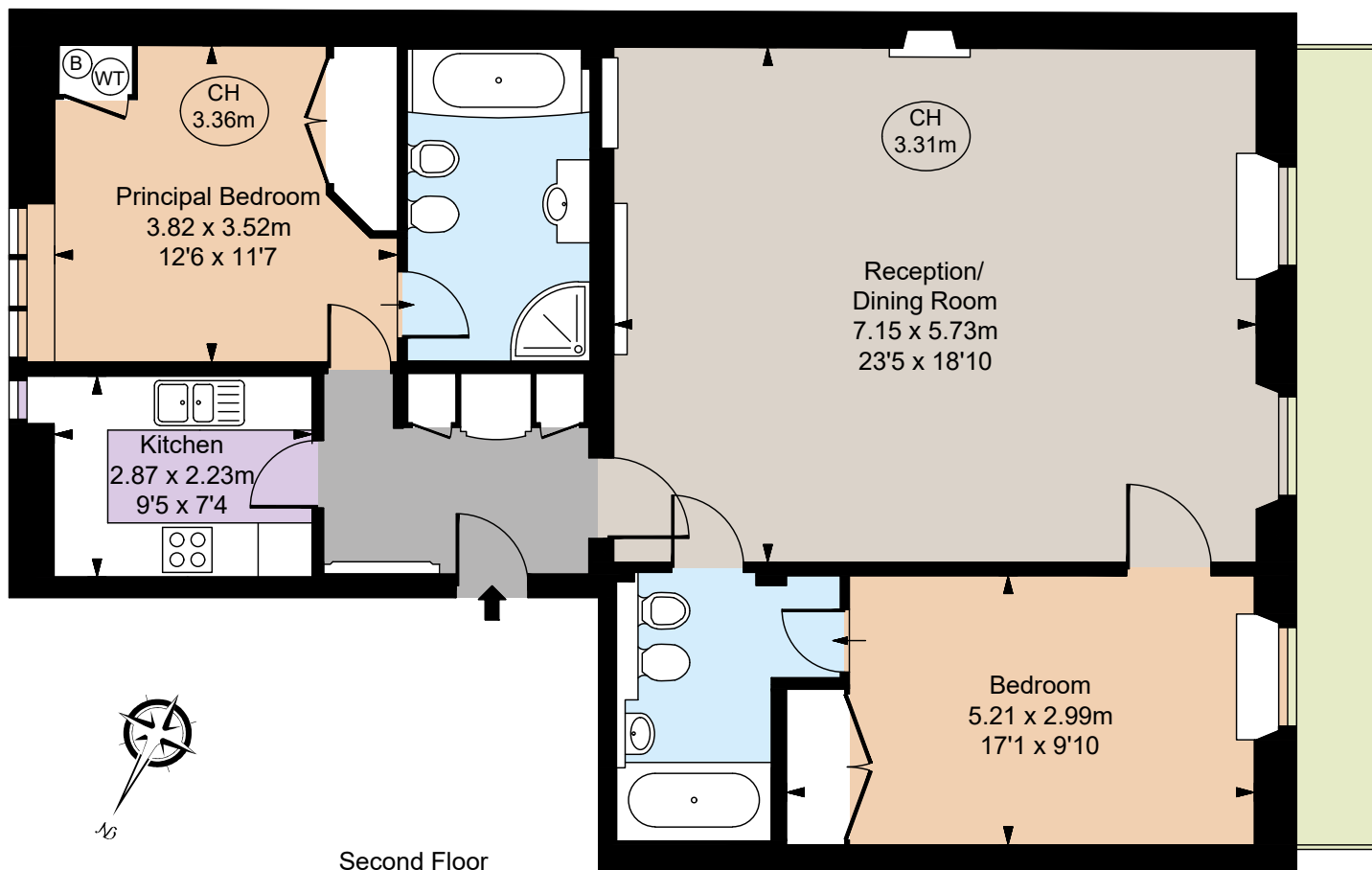
The reception room is spacious with a high ceiling including a dining area. Large windows that lead onto the terrace looking onto the Queen's Gate Garden Square. Located on the opposite side of the entrance hall is a fitted kitchen. The first bedroom is quaint with a large sash window that warms the room with light. This room includes an en suite bathroom. The principal bedroom also benefits from built in wardrobes and large windows. The en-suited bathroom includes a shower and a bathtub.

Location

Queens Gate Gardens is an impressive garden square of Stucco fronted period conversions around the superb communal gardens. Gloucester Road underground station (Piccadilly, District & Circle lines) is moments away, as are the open spaces of Kensington Gardens and Hyde Park







Floorplans

Gross internal area 1,091 sq ft (101.39 sq m)
For identification purposes only.

General

Tenure: Leasehold approximately 43 years
Local Authority: The Royal Borough of Kensington and Chelsea
Service Charge: £7,020 per annum
Ground Rent: £75 per annum
Council Tax: Band G
EPC Rating: D
Parking: Parking permit - The Royal Borough of Kensington and Chelsea
Broadband: Installed

IMPORTANT NOTICE: Strutt & Parker gives notice that: 1. These particulars do not constitute an offer or contract or part thereof. 2. All descriptions, photographs and plans are for guidance only and should not be relied upon as statements or representations of fact. All measurements are approximate and not necessarily to scale. Any prospective purchaser must satisfy themselves of the correctness of the information within the particulars by inspection or otherwise. 3. Strutt & Parker does not have any authority to give any representations or warranties whatsoever in relation to this property (including but not limited to planning/building regulations), nor can it enter into any contract on behalf of the Vendor. 4. Strutt & Parker does not accept responsibility for any expenses incurred by prospective purchasers in inspecting properties which have been sold, let or withdrawn. 5. We are able to refer you to SPF Private Clients Limited ("SPF") for mortgage broking services, and to Alexander James Interiors ("AJI"), an interior design service. Should you decide to use the services of SPF, we will receive a referral fee from them of 25% of the aggregate of the fee paid to them by you for the arrangement of a mortgage and any fee received by them from the product provider. Should you decide to use the services of AJI, we will receive a referral fee of 10% of the net income received by AJI for the services they provide to you. 6. If there is anything of particular importance to you, please contact this office and Strutt & Parker will try to have the information checked for you. Photographs taken September 2025. Particulars prepared October 2025. Strutt & Parker is a trading style of BNP Paribas Real Estate Advisory & Property Management UK Limited

South Kensington

90 Old Brompton Road, London, SW7 3LQ

020 7581 7000

southken@struttandparker.com
struttandparker.com



@struttandparker

Over 50 offices across England and Scotland,
including Prime Central London

For the finer things in property.

