

Queens Gate Terrace

Kensington, SW7



A stunning and very well laid out, fifth and sixth floor, 3-bedroom apartment (lift) with excellent living space, including an impressive studio reception room with wonderful volume and light.



1 RECEPTION ROOM



3 BEDROOMS



3 BATHROOMS



STUDY



SHARE OF FREEHOLD



2,453 SQ FT



**ASKING PRICE
£3,750,000**



The property

This magnificent Grade II listed building benefits from 24 hour portering and a gym, and is moments from Kensington Gardens and Hyde Park.

The property benefits from a large kitchen/dining room, three bedroom suites including a separate guest suite on the sixth floor, as well as a study on the mezzanine above the studio reception room.

Location


Queens Gate Terrace is a wide and impressive road adorned with stucco fronted Victorian buildings in South Kensington. The address is nestled between the iconic Queen's Gate and Gloucester Road, moments from the green open space of Kensington Gardens and Hyde Park, and situated close to world renowned attractions including the Victoria and Albert Museum, Natural History Museum and Science Museum. Gloucester Road & Kensington High Street Stations serviced by the District, Circle & Piccadilly lines are nearby.



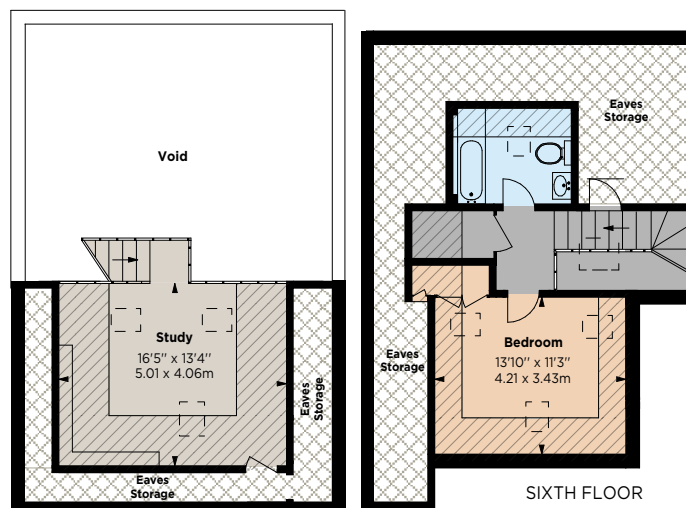
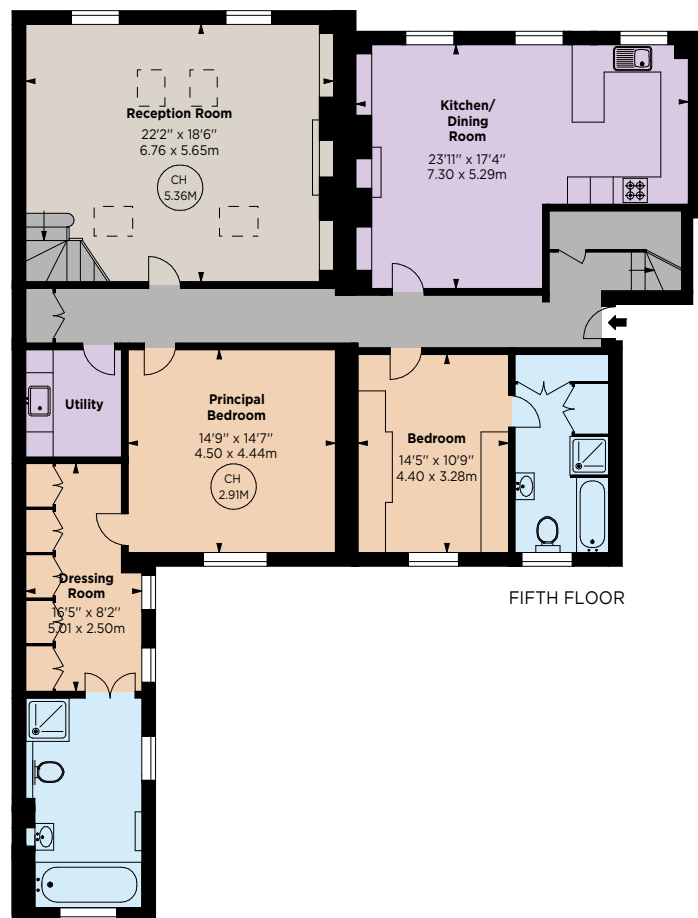


Key :

CH - Ceiling Height

 - Under 1.5m

 - Eaves



Floorplans

Gross internal area 2,453 sq ft (227.98 sq m)
including 22.15 sq m of under 1.5m area,
excluding eaves
Approx. eaves area 375 sq ft (34.89 sq m)
Total 2,829 sq ft (262.87 sq m)

For identification purposes only.

General

Tenure: Leasehold of 999 years from 19th November 1999 plus a Share of freehold

Local Authority: The Royal Borough of Kensington and Chelsea

Service Charge: For the period 1/1/26 to 30/6/26 approximately £ 11,548. Included within this figure is a significant contribution to the sinking fund

Council Tax: Band H

EPC Rating: C

Parking: RBKC Residents Parking Permit

Mobile coverage and broadband: Information can be found here: <https://checker.ofcom.org.uk/en-gb/mobile-coverage>

Agents note: One of the executors is known to the vendors agent.

South Kensington

90 Old Brompton Road, London, SW7 3LQ

020 7581 7000

southken@struttandparker.com
struttandparker.com

IMPORTANT NOTICE: Strutt & Parker gives notice that: 1. These particulars do not constitute an offer or contract or part thereof. 2. All descriptions, photographs and plans are for guidance only and should not be relied upon as statements or representations of fact. All measurements are approximate and not necessarily to scale. Any prospective purchaser must satisfy themselves of the correctness of the information within the particulars by inspection or otherwise. 3. Strutt & Parker does not have any authority to give any representations or warranties whatsoever in relation to this property (including but not limited to planning/building regulations), nor can it enter into any contract on behalf of the Vendor. 4. Strutt & Parker does not accept responsibility for any expenses incurred by prospective purchasers in inspecting properties which have been sold, let or withdrawn. 5. We are able to refer you to SPF Private Clients Limited ("SPF") for mortgage broking services, and to Alexander James Interiors ("AJI"), an interior design service. Should you decide to use the services of SPF, we will receive a referral fee from them of 25% of the aggregate of the fee paid to them by you for the arrangement of a mortgage and any fee received by them from the product provider. Should you decide to use the services of AJI, we will receive a referral fee of 10% of the net income received by AJI for the services they provide to you. 6. If there is anything of particular importance to you, please contact this office and Strutt & Parker will try to have the information checked for you. Photographs taken December 2025. Particulars prepared January 2026. Strutt & Parker is a trading style of BNP Paribas Real Estate Advisory & Property Management UK Limited.



@struttandparker

Over 50 offices across England and Scotland,
including Prime Central London

For the finer things in property.

**STRUTT
& PARKER**

BNP PARIBAS GROUP