



RAINSBOROUGH
SQUARE
LONDON SW6



An impressive four-bedroom home, in Fulham's most discreet gated development.

Positioned within one of Fulham's most discreet and prestigious gated garden squares, this exceptional interior-designed townhouse offers close to 3,000 sq ft of luxurious accommodation, complete with secure drive-in garage parking, concierge services, and a beautifully manicured communal square. Providing the ideal residence for buyers seeking privacy, security, and effortless sophistication.





Comprehensively redesigned to an exacting standard, the house combines elegant contemporary design with intelligent modern living. A sculptural bespoke staircase forms the centrepiece of the home, while engineered timber flooring, limewashed walls, and carefully curated John Cullen lighting create a calm and refined atmosphere throughout. Comfort and convenience are seamlessly integrated throughout the house with underfloor heating, air conditioning, Crestron smart home technology, and integrated audio systems.

The heart of the home is an outstanding Poggenpohl kitchen, appointed with premium stone surfaces and Miele appliances, flowing naturally into generous dining and entertaining spaces with direct access to a beautiful terrace. The ground floor provides a useful study, impressive reception room which leads out to the garden, through bifold doors. The principal bedroom suite provides a luxurious private retreat with bespoke dressing area with exquisite cabinetry and beautifully finished marble bathroom, while two further bedrooms and a shared bathroom are located on the second floor. The top floor has been thoughtfully arranged as a self-contained guest suite, ideal for visiting family or staff.





Every detail has been meticulously considered, from the bespoke joinery and designer lighting to the spa-inspired bathrooms finished in Mandarin Stone marble, Domus tiles, and Gessi brassware. Rarely does a London home combine such design quality with practical amenities including secure gated access, concierge support, extensive storage, and private garage parking.

Situated moments from the boutiques, cafés, and restaurants of Parsons Green, Rainsborough Square enjoys an enviable position close to the Thames Path and Eel Brook Common, while offering swift access to Chelsea, Knightsbridge, the West End, and Heathrow via excellent transport connections. This is a rare opportunity to acquire a turnkey London home within one of South West London's most sought-after private enclaves.

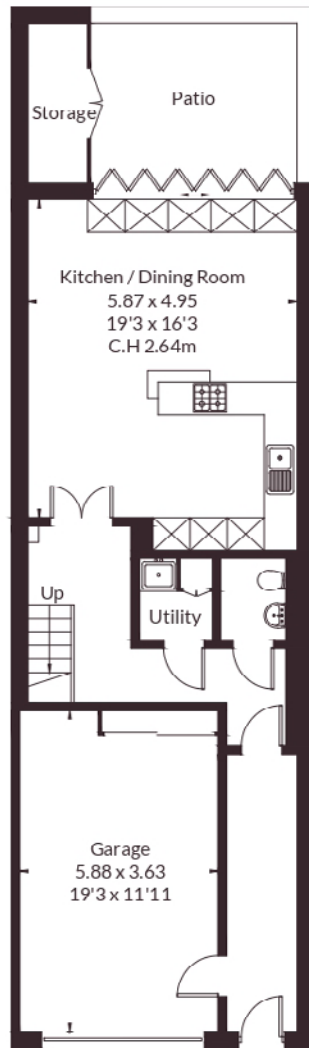


- Four-Five Bedrooms
- Bespoke Staircase
- Poggenpohl Kitchen
- Stone Worktops
- Miele Appliances
- John Cullen Lighting
- Walk-In Wardrobe
- Limewash Walls
- Creston Controls
- Landscaped Terraces
- Two Parking Spaces and EV Charger Installed
- Air Conditioning

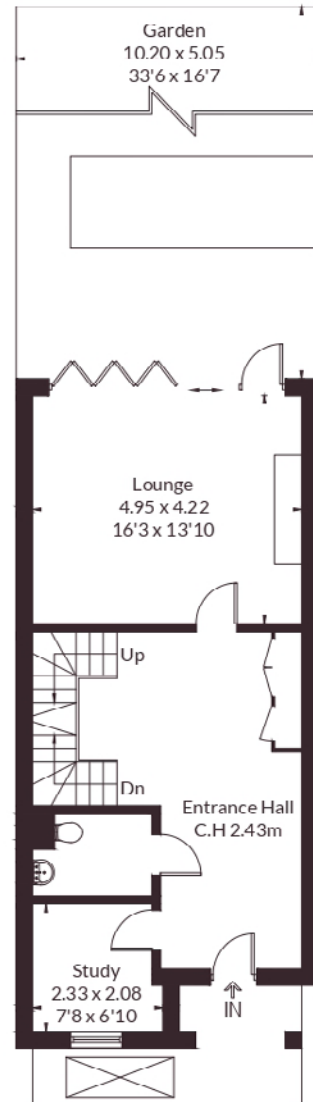
Additional Information

Tenure : Freehold
EPC: Band B
Council Tax: Band H
Local Authority: Hammersmith & Fulham

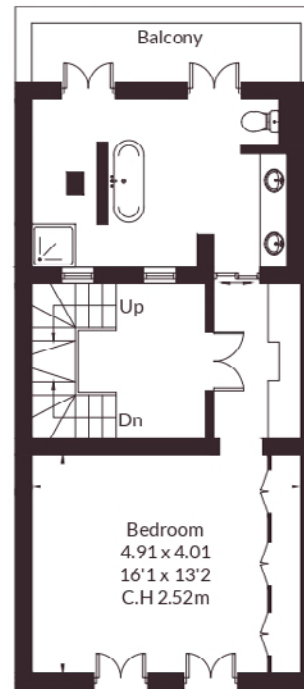
Approximate Floor Area = 277.2 sq m / 2984 sq ft
 Store = 3.2 sq m / 34 sq ft
 Total = 280.4 sq m / 3018 sq ft



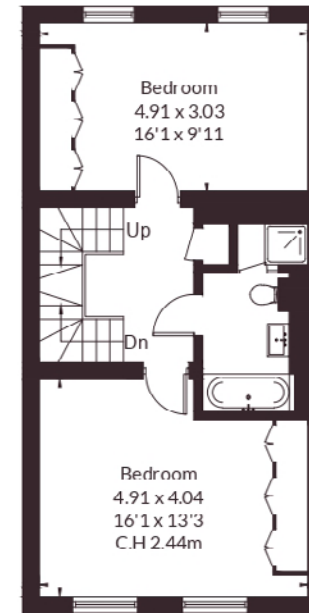
Lower Ground Floor



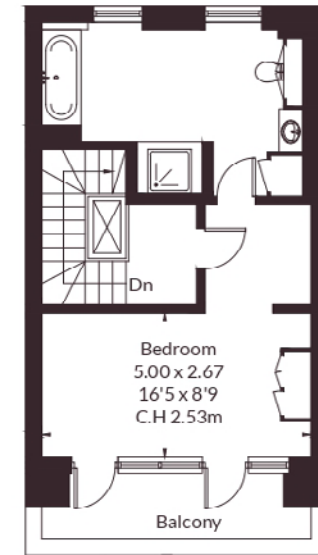
Ground Floor



First Floor



Second Floor



Third Floor



This floor plan has been drawn in accordance with RICS Property Measurement 2nd edition.

All measurements, including the floor area, are approximate and for illustrative purposes only. @fourwalls-group.com #108639

Strutt & Parker

Strutt & Parker Fulham

701 Fulham Road, London SW6 5UL

020 7731 7100

fulham@struttandparker.com

IMPORTANT NOTICE: Strutt & Parker gives notice that: 1. These particulars do not constitute an offer or contract or part thereof. 2. All descriptions, photographs and plans are for guidance only and should not be relied upon as statements or representations of fact. All measurements are approximate and not necessarily to scale. Any prospective purchaser must satisfy themselves of the correctness of the information within the particulars by inspection or otherwise. 3. Strutt & Parker does not have any authority to give any representations or warranties whatsoever in relation to this property (including but not limited to planning/building regulations), nor can it enter into any contract on behalf of the Vendor. 4. Strutt & Parker does not accept responsibility for any expenses incurred by prospective purchasers in inspecting properties which have been sold, let or withdrawn. 5. We are able to refer you to SPF Private Clients Limited ("SPF") for mortgage broking services, and to Alexander James Interiors ("AJI"), an interior design service. Should you decide to use the services of SPF, we will receive a referral fee from them of 25% of the aggregate of the fee paid to them by you for the arrangement of a mortgage and any fee received by them from the product provider. Should you decide to use the services of AJI, we will receive a referral fee of 10% of the net income received by AJI for the services they provide to you. 6. If there is anything of particular importance to you, please contact this office and Strutt & Parker will try to have the information checked for you. Strutt & Parker is a trading style of BNP Paribas Real Estate Advisory & Property Management UK Limited. Photographs taken May 2026. Particulars prepared May 2026.